

**A guide to Canton businesses and events**

- Special Section

**HOMETOWNlife.com**  
Check local sports and news daily online

**Big year-end movie preview**

Inside today's newspaper



**SUNDAY**  
October 12, 2008

# CANTON Observer

75 cents

WINNERS OF STATE AND NATIONAL AWARDS OF EXCELLENCE

www.hometownlife.com

## Canton could get 2nd charter school

BY TIFFANY L. PARKS  
OBSERVER STAFF WRITER

It's not an extension of Canton Charter Academy, but a new charter school could be on the horizon for the township.

A special land use request for Universal Academy, a Hamadeh Educational Services, Inc. school, is slated to go before the Canton Planning Commission Nov. 3.

Township Planner Jeff Goulet said the group submitted paperwork to Canton about a month

ago. The K-12 public charter school is looking to build on a Saltz Road parcel between Ridge and Beck roads. The land divides the Vintage Valley and Antique Forest subdivisions and is less than a mile south of Canton Charter Academy, which had proposed an expansion to its current facility earlier this year.

Because the proposed plans involve a school, Goulet said Hamadeh Educational Services isn't obligated to submit a formal site plan to the township.

Nawal Hamadeh, the founder, superintendent

and CEO of Hamadeh Educational Services, has two schools in Dearborn and one in Detroit and says she's ready to branch out into the township.

"We are definitely excited," she said. "Our targeted student population seems to exist (in Canton)."

The school system, which has an emphasis on promoting leadership and cultural diversity, has 2,000 students.

"Since our first graduating class in 2004, we have had a 100 percent graduation rate," said Hamadeh, who previously worked in both pub-

lic and private schools. "And 100 percent of our students have gone to college."

Hamadeh, who highlighted that her schools offer classes on Arabic as a second language, said children are better served by having educational options.

"Private schools can't meet 100 percent of the needs and public schools can't meet 100 percent but charter schools can serve as a medium," she said. "I believe that choices are great."

tlparks@hometownlife.com | (734) 953-2170



PHOTOS BY TOM HOFFMEYER | STAFF PHOTOGRAPHER

Gallimore Elementary School fifth-grader Abbey Farwell watches as she releases her group's balloon-powered vehicle.

## Wheels in motion

Balloon power tests students in science, math

BY TONY BRUSCATO  
OBSERVER STAFF WRITER

Every Wednesday afternoon it's a challenge to move through the crowded fifth-grade corridor at Gallimore Elementary as students build balloon-powered cars and test them to see how straight and far they can go.

It's an hour to learn about science and math, but you won't hear any complaints from students about being bored.

All third- and fifth-grade students in the Plymouth-Canton school district are participating in "A World in Motion," designed to show students that learning math and science is both practical and fun. While the program isn't new, Plymouth-Canton is the first public school district in the country to have a district-wide partnership with the Society of Automotive Engineers. Student mentors for the hour are adult engineers from automotive companies and their suppliers, including Johnson Controls and AVL North America in Plymouth Township and Yazaki in Canton Township. It's an effort by the companies to develop home-grown engineers to fulfill future demands.

"It brings hands-on practical experience to children, and the kids can't get enough of it," said Russ Burgei, an engineer from Johnson Controls who volunteers at Workman Elementary. "Not only does it fit grade-level requirements, but it gives the volunteer engineers an opportunity to mentor and interact with the children. Engineering can be fun, it's not all about data."

Third-graders construct paper sailboats and test different sail shapes and sizes to meet spe-



Gallimore Elementary School fifth-graders John Vary, left, and Morgan Fuller get a little help from Yazaki quality engineer Anne Michelis as they work on their science project.

cific performance criteria, all-the-while learning about friction, forces and design.

Fifth-graders build a Jet Toy — toy cars air-powered with a balloon — in which they work with axles and weights to make the car go straight and for distance. Whether they realize it or not, students are learning about jet propulsion, friction, air resistance and design as core scientific concepts.

"We let the balloon go and see how it runs," said 10-year-old Jacob Kubinski of Canton, a Gallimore fifth-grader who was testing his group's air-powered car in the hallway. "We have to tighten the axles to make sure it doesn't go left or right. If it does, you can probably angle the balloon the way it's not going."

Please see **BALLOON, A6**

## Wayne-Westland will need to make up missing days

BY SUE MASON  
OBSERVER STAFF WRITER

School is back in session in the Wayne-Westland Community Schools, but the question now is when the four days lost to a teachers' strike will be made up.

"These days have to be made up," said Superintendent Greg Baracy. "Unlike the union lawyer's analogy that these days were equivalent to a snow day, they were not an act of God. It was a strike, and these days will have to be made up. We may have to use one of those long breaks to do that."

Baracy made the comments Friday morning just hours after students returned to classes following an end to a four-day strike by members of the Wayne-Westland Education Association. Wayne County Circuit Court Judge Kathleen MacDonald issued an injunction Thursday, ordering an end to the walk-out.

The teachers have been working without a contract since Aug. 25. The union and district had agreed to a 30-day extension which expired Sept. 30, just six days before teachers walked off the job.

Michigan law prohibits teachers from striking and those who do could face fines and firing. However, MacDonald in her decision put the district on notice that it cannot take disciplinary action against the teachers who walked out.

"I'm disappointed by that stipulation," said school board Vice President Skip Monit, who was in the courtroom Thursday morning. "This sends a bad message to students that you can break the law and get away with it."

He added that MacDonald's decision leaves school boards "being held hostage by teachers."

In a statement issued by the Michigan Education Association WWEA President Nancy Strachan said that teachers were able to make the community aware of what was going on in negotiations.

### NEGOTIATIONS UPDATE

■ Wayne-Westland school board Vice President Skip Monit described Thursday's session with a state mediator as "pretty much a stalemate."

According to Monit, the district offered a counter to a union proposal of retaining MESSA health insurance at no cost to members. The district countered with its modified health care proposal that would tie the employee's cost to the percentage of increase in money the district gets from the state.

The offer was "flatly rejected by the union," Monit said.

■ The Wayne-Westland Education Association said the district "failed to respond" to its written proposal, but instead presented on that "provided zero dollars" of its fund balance to pay for class size reduction. According to the union, the district "indicated that any class size reduction would have to come out of the teachers' contract."

■ Times and dates of negotiations are determined by the state mediators who have asked the two sides to prepare proposals to bring to the table when bargaining resumes at 5 p.m. Monday. The Wayne-Westland school board plans to meet in closed session at noon Monday before negotiations resume.

■ Parents held a rally at the school board offices Thursday evening to show support for the teachers and students and an effort has started aimed at recalling members of the school board. Petitions have been pulled with the Wayne County Elections Commission to start the process. Ballot language will have to be approved by the commission before organizers can begin gathering signatures to force a recall election. People can send an e-mail to waynewestlandrecalltheboard@yahoo.com for more information.



BILL BRESLER | STAFF PHOTOGRAPHER

### Crowned

Kara Gregory is crowned the 2008 Canton High School homecoming queen by last year's queen, Brooke Van Esley. Homecoming king Dan Stoney, star kicker for the Chiefs, was in the locker room but was ably represented by stand-in Joey Hanagan.

For Home Delivery call:  
(866) 887-2737

© The Observer & Eccentric Newspapers

Volume 34  
Number 31



**Trust Your Community Lender**

**COMMUNITY FINANCIAL MORTGAGE SERVICES**

- FHA Loans
- Great rates on new purchase & refinanced loans
- Zero Down Programs

Call today for a free Mortgage Analysis!

(734) 582-8500 (877) 937-2528 ext. 8500 www.cfeu.org

PLYMOUTH CANTON NORTHVILLE NOVI

Federally insured by NCUA. Equal Housing Lender. ©2008 Community Financial

**INDEX**

APARTMENTS	D2
AUTOMOTIVE	C9
CLASSIFIED	C7-D6
HEALTH	B5
HOMETOWNLIFE	C1
JOB	C8
NEW HOMES	D1
OBITUARIES	C4
OPINION	A11
REAL ESTATE	D2
SERVICE GUIDE	D4
SPORTS	B1

Coming Thursday in **fill@t**



Scary movies and spooktacular Halloween events

AROUND CANTON

'Stories from the Shadows'

Canton Leisure Services will host an evening of "Stories From the Shadows" on Sunday, Oct. 12 from 4-7 p.m. at Canton's Lower Rouge River Recreation Trail, located at Morton Taylor and Michigan Avenue.

Storytellers will do their best to assure age-appropriate entertainment throughout the evening. All children must be accompanied by an adult. Parents are strongly discouraged in bringing children under 4 years of age to this scary event. Be sure to dress weather appropriately, wear comfortable shoes and make sure you're sitting next to someone braver than you.

Registration is required to attend this event where participants will hear about mysterious noises, haunted places, and unexplained events. Canton residents can currently register for just \$8 per participant. Non-residents can register for just \$10. Space is limited. Sign up today online at leisure.canton-mi.org. In the event of inclement weather, call (734) 394-5460 for information regarding program cancellation.

For more information about "Stories From the Shadows" and other Fall Canton Leisure Services events, call (734) 394-5460 or visit www.canton-mi.org.

Chorus help

The Canton Community Youth Chorus and Adult Chorus, under the direction of David Welling, is currently accepting new members. The Youth Chorus is comprised of boys and girls 6-15 years of age, while the Adult Chorus is for anyone 16 years of age and older.

The purpose of these groups is to provide an outlet for those individuals interested in singing in an organized choir. Various vocal and performing skills will be taught through vocal exercises and choral work. The groups will explore many styles of music, including classical, pop, musical theatre and jazz. Whether you are a beginner or have performed in choirs before, come and enjoy this shared musical experience.

The chorus' concerts this season included an on-stage dress rehearsal on Dec. 11 with the main stage performance schedule on Dec. 12, at 7:30 p.m. at the Village Theater at Cherry Hill. Tickets for this entertaining performance are just \$12.

The Adult Chorus meets every Monday from 7:30-9:30 p.m. in the Biltmore Studio of the Village Theater, located at 50400 Cherry Hill Road. The Youth Chorus meets Monday evenings from 6-7 p.m., also in the Biltmore Studio.

The cost to join the Youth Chorus is \$40. There is a \$50 fee to join the Adult Chorus. Register at the Summit

on the Park. For more information contact, Jennifer Tobin, Canton Arts Coordinator at (734) 394-5484 or by e-mail at jtobin@canton-mi.org.

Canton Newcomers

The Canton Newcomers monthly meeting scheduled for 7:15 p.m., Nov. 5 will welcome Jeannette Williams from the Canton Summit Aquatic and CPR Center, who will be speaking on how we can best handle emergency situations at home (someone falling or fainting, general cuts, and other home disasters) and the best remedies for these situations. Demonstrations will be done with club volunteers.

In addition, Showroom of Elegance will be holding a "Gold Party." Bring your unwanted jewelry to be paid in cash for your items. This event also supports our club's fund-raising goals.

The group welcomes new members and visitors, including residents who have lived in Canton a few months to more than 50 years.

The meeting will take place at the Sunflower Subdivision Clubhouse at 46800 Hanford Road, Canton. For more information, visit the group's Web site at www.cantonnewcomers.org for more information or call Melanie at (734) 660-2328.

Bug hunters needed

Friends of the Rouge's Fall Bug Hunt is scheduled for 9 a.m. to 4 p.m., Saturday, Oct. 18 at Schoolcraft

College's VisTaTech Center (Waterman Room). Pre-register before Oct. 10 (required) by calling (313) 792-9621 or e-mailing monitoring@therouge.org. More information and past results can be found at www.therouge.org.

This is a great opportunity to get outside, learn about your local stream and have a good time. Volunteers need no experience but must pre-register before October 10. Children 5 and older are welcome when accompanied by a participating adult. On Bug Hunt Day, volunteers meet at a central location (Schoolcraft College) where they are assigned to a team. Each team carpools to two sites where they sample under the direction of a trained team leader. Volunteers take on the job of "picking" anything moving from sample trays brought up from the river.

Each team hopes to find lots of mayflies, stoneflies and caddisflies at their site because the presence of many of these sensitive insects tells them that the stream is in good shape. The Hunt is part of a long term monitoring program designed to track the health of Rouge streams. The Michigan Department of Environmental Quality uses the data to screen for problems and Rouge communities use it to track the health of their streams. The Fall Bug Hunt is funded by the Rouge River National Wet Weather Demonstration Project.



The Lettermen return

The Lettermen, who have been performing for more than 40 years, will perform at the Village Theater at Cherry Hill on Oct. 24. The group is known for its classic songs including "Put Your Head On My Shoulder," "Goin' Outta My Mind," and "Can't Take My Eyes Off You." Tickets are \$45 for all seats. The current Lettermen consist of Tony Butala (at bottom), who is the group's only original member, Donovan Scott Tea (an accomplished singer and songwriter who joined the group in 1984) and Darren Dowler (a young actor, singer, impressionist who came aboard in 1995). The year 2000 marked the group's 40th Anniversary. Butala created the Vocal Group Hall of Fame in Sharon, dedicated to honor the greatest vocal groups in the world. Call (734) 394-5300.

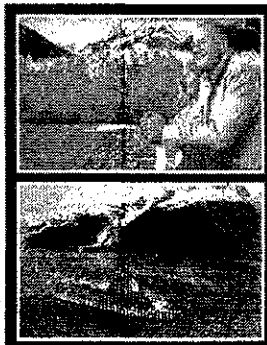
Alaska Cruise Seminar

presented by AAA Travel Agency & Princess Cruises®

Thursday, October 16 - 6:00 p.m.

AAA Canton Branch  
2017 N. Canton Center Rd.  
734-844-0146

OPTION 5



Come learn about the wonders of an Alaska cruise or cruisetour with Princess Cruises. Plus, discover the AAA member benefits available only through AAA Travel Agency.



**Observer**  
WHERE HOMETOWN STORIES UNFOLD  
GANNETT HOMETOWNLIFE.COM

**HOW TO REACH US**

Home Delivery/Customer Service.....1-866-88-PAPER (866-887-2737)  
Newsroom.....(734) 953-2104 Fax.....(734) 591-7279  
Sports Nightline.....(734) 953-2104  
Classified Advertising.....1-800-579-SELL (7355)  
Display Advertising.....(734) 582-8363

**POSTAL PERIODICAL REQUIREMENTS**  
The Canton Observer - Publication NO. USPS 663-670 Published every Thursday and Sunday. Periodical postage is paid at Livonia, Michigan 48150.  
36251 Schoolcraft, Livonia, MI 48150

VISIT HOMETOWNLIFE.COM

**CANTON CINEMA**  
Quality Theaters  
734-844-3456

**DETROIT'S BEST MOVIE DEAL**  
ALL LOUNGER SEATS  
ALL DIGITAL SOUND  
ALL STADIUM SEATING  
**\$4 to \$4.50 ALL SEATS**  
EXCEPT ADULT EVENING

Free drink refills & 25¢ cone refills

SHOWTIMES 10/10 - 10/16 No passes

**FREE FALL MATINEES**  
Saturday & Sunday 10 & 11 AM  
10/10-10/12 SPIDERWICK CHRONICLES (PG)

**MET: SALOME LIVE**  
SATURDAY 10/11 1:00 PM

**DEATH NOTE II**  
WED & TH 10/15 & 10/16 7:30 PM

**CITY OF EMER (PG)** 1:05, 3:15, 5:25, 7:35, 9:45 FRI/SAT LS 11:55  
**BODY OF LIES (R)** 11:15, 1:55, 4:35, 7:15, 9:55  
**THE EXPRESS (PG)** 11:00, 1:45, 4:30, 7:15, 10:00  
**BLINDNESS (R)** 9:30  
**BEVERLY HILLS CHIHUAHUA (PG)** 12:10, 2:25, 4:45, 7:00, 9:15 FRI/SAT LS 11:30  
**HOW TO LOSE FRIENDS AND ALIENATE PEOPLE (R)** FRI-TUE 6:45 FRI/SAT LS 11:45  
**FLASH OF GENIUS (PG-13)** SAT 9:10 WED-TH 12:05  
FRI, SUN-TUE 12:05, 9:10  
SAT 9:10 WED-TH 12:05  
**NIGHTS IN RODANTHE (PG-13)** 12:55, 3:05, 5:15, 7:25, 9:35 FRI/SAT LS 11:45  
**EAGLE EYE (PG-13)** 11:50, 2:20, 4:50, 7:20, 9:50

**COUPON**  
FREE 20oz DRINK  
with \$3.25 purchase of 46oz. bag of buttery popcorn  
at participating cinema. Exp. Oct. 18, 2008

**All Things da Vinci®**  
October 30, 2008, 6-8:30 p.m.

8:30 p.m. Registration / 7 p.m. Lectures  
8 p.m. da Vinci® hands-on demo

Ellen Thompson Women's Health Center  
5320 Elliott Drive • Ypsilanti  
Located on the campus of St. Joseph Mercy Hospital, Ann Arbor

**SAINT JOSEPH MERCY HEALTH SYSTEM**  
A MEMBER OF TRINITY HEALTH

The da Vinci® Surgical System is being used throughout the country to perform a variety of minimally invasive procedures, allowing patients to heal quicker and resume their normal activities sooner. Physicians at Saint Joseph Mercy Health System are successfully utilizing the da Vinci robot for gynecological, cardiovascular, prostate and cardiothoracic surgeries.

We invite you to learn more about these procedures, so you know the options that are available to you. Meet our skilled surgeons and try your hand with the da Vinci robot.

Light refreshments & Door Prizes = FREE =

Registration Required  
Register online at [sime.org/health](http://sime.org/health) or call 734-712-5990

REMARKABLE MEDICINE. REMARKABLE CARE.

**Don't relocate... RENOVATE!**  
~Quality construction since 1989~  
Licensed & Insured

Design • Sales • Installation

**SOUTH LYON SHOWROOM OPENING SOON!**

Additions • Basements  
Kitchens • Bathrooms  
Wet Bars • Offices  
Laundry • Garages  
Roofing • Siding  
Concrete • Insurance & More!

Visit us on the web **SEGHI RENOVATIONS** Call for your appointment

**248-437-2454**  
jimseghirenovations.com 440 N. Lafayette, South Lyon

**Dignified Funeral Packages**  
From **\$3499**

Includes Visitation, Funeral, Simple Casket and Memorial Service!

**Risko-Ferguson Family**  
Funeral Home and Cremation Services

New, comfortable facility with 3 lounges... 2 for the Kids with Xbox gaming and computer internet access. Live, world-wide webcasting and a "Celebration of Life" video included with every funeral service.  
2401 S. Wayne Road (between Palmer & Glenwood) • Westland • 734-728-1900  
Visit us on the web: [www.riskoferguson.com](http://www.riskoferguson.com)

**Direct Cremation \$675**  
NO Hidden Fees  
Call for Details

**The Ramblin' River Road Show** promises to sweep you back in time to an America where entertainment meant a lively array of performances suitable for the whole Family.

You will smile, laugh, sing along, and tap your feet to forms of fun and good times which have been all but forgotten in this high tech, digital world.

Hosted by Matt Watroba, with expert musical direction by David Mosher, the show will feature the outstanding performances of Joel Mabus, our house band, the well-known Raisin Pickers and the outstanding family comedy of Mr. OJ Anderson.

**Saturday, October 18, 2008 • 8 pm**  
At The Cherry Hill Village Theater  
50400 Cherry Hill • Between Beck & Napier • Canton  
734-394-5300  
Ticket prices: \$18 General Admission  
\$15 Seniors & High School Students

**\$3.00 Ticket Discount**  
With this coupon, or enter the code "RRRS" into the Village Theater website: [www.canton-mi.village theater](http://www.canton-mi.village theater)

The Ramblin' River Road Show is a product of Singing Horse Productions, LLC • Check out our website: [www.SingingHorseLLC.com](http://www.SingingHorseLLC.com)

# Down economy a 'gift' for new business

BY TIFFANY L. PARKS  
OBSERVER STAFF WRITER

If there is such a thing as a recession-proof business, perhaps Katrena Parks and Erin Skaff have struck commerce gold.

The two township women, who were both immersed in corporate America a year ago, are the owners of Expressions from Canton, a gift basket company they launched in March.

The duo met five years ago through a day care facility and as their families got closer, they would often broach the idea of starting a home-based business together.

Parks said they got serious about hashing out a plan when she learned that her position as a human resources director for a health-care company was being phased out.

"We talked about going into interior decorating and party planning but then came the idea for gift baskets," she said, adding that are both into creating unique gifts. "We felt now was the time to do it and we had a year to prepare."

Skaff, who recently received word that she will be laid off from her job as a program manager for an automotive company, said under other circumstances the news would have been unsettling but instead she's excited about the opportunity to fully delve into her

## EXPRESSIONS FROM CANTON

- Owners: Katrena Parks and Erin Skaff
- Telephone: (734) 839-6385
- Web site: www.ExpressionsfromCanton.com

business with Parks.

"Fortunately, we like hanging out together," she laughed, noting that the two often lose track of time and work well into the night once they get going with an order.

Since March, the two have made dozens of custom gift baskets with varying themes such as volleyball, Margaritaville, golf and the New York Yankees. They specialize in baskets for birthdays, housewarmings, holidays, weddings, sporting events and graduations.

"There have been a lot of peaks and valleys but we are doing what we enjoy and that doesn't happen very often," said Parks, adding that the company has been featured at local expos and has been a mainstay at the township's farmer's market.

In addition to having each other, the two say their husbands have played a role in their success. Don Skaff put together the company's Web site, www.ExpressionsfromCanton.com and Michael Parks has guided their marketing and promotion.

"When she first told me about the idea for the business, I thought it was great because she has been building baskets ever since I've known her," said Michael Parks, adding that they expect the company to weather today's troubled economy. "Our research is telling us that gift baskets are recession proof in that people will continue to have children supporting our baby gift basket line to the opposite end of the spectrum of people honoring those loved ones that have passed supporting our sympathy and thinking of you baskets."

Parks joked that her two children, Owen and Kendall, and Skaff's three kids, Griffin, Derek and Paige, have also taken an interest in the business.

"It's so much fun because my son will come to me and give me his ideas," she said, while Skaff chimed in that the gift-basket business has been an ideal fit for all of their lives.

With many designs already under their belts and new ideas cropping up everyday, Skaff said it's difficult to pinpoint which basket has been her favorite.

"It seems like every time we finish one, we both say 'Now that is the cutest basket we have ever made!' We love them all," she said. "And we are having a blast."

tiparks@hometownlife.com | (734) 953-2170



BILL BRESLER | STAFF PHOTOGRAPHER

Katrena Parks and Erin Skaff display some of their basket creations.

**We get your dentures fitting right the first time!  
We guarantee it!**

- Same Day DENTURES w/Extractions
- CROWNS-\$200 OFF
- FLEXIBLE SOFT PARTIALS

Get your dental work done before your insurance runs out!

**AMERICAN MADE RIGHT HERE IN LIVONIA!**

Full Set of  
**Dentures**  
From **\$380**

Offer Good til December 31, 2008

**APPLE DENTURE CENTER & MORE, L.L.C.**  
28200 West 7 Mile Rd. • Suite 126 • Livonia, MI 48152  
(248) 777-7547

Dr. Michael Blume, D.D.S.    Ronald DeLuca, D.D.S.

## HIDALGO TRUNK SHOW

Northville: October 10-14th  
Garden City: October 15-18th

**ORIN JEWELERS**  
NORTHVILLE  
101 East Main Street at Center  
248.349.6940  
www.orinjewelers.com

Mix & match, stackable rings & bracelets in enamel and 18K white or yellow gold. See the newest collections from this award-winning designer!

Come into the store and register to win a \$250 gift certificate toward Hidalgo jewelry!

**GARDEN CITY**  
29317 Ford Road at Middlebelt  
734.422.7030

AMERICAN GEM SOCIETY

**WHO SAYS  
YOU CAN'T  
HAVE IT  
ALL?**

**GREAT RATES AND STABILITY**

Flagstar has a history of offering the most competitive rates. We even offer a best rate guarantee to our Loyalty Checking customers. So whatever your timeframe, Flagstar has a great rate for you.

**13-month CD**  
**4.50%** APY\*  
With Loyalty Checking Account.

**4-year CD**  
**5.10%** APY\*  
With Loyalty Checking Account.

Individual accounts now FDIC-insured up to \$250,000

**Flagstar**  
The new wave in banking

Member FDIC | (800) 642-0039 | www.flagstar.com

\*Stated Annual Percentage Yields (APY) are accurate as of 10/2/08. Minimum opening balance requirement is \$500 and maximum deposit is \$100,000. Deposits are allowed only on the maturity date or during the grace period. Account fees could reduce earnings. Penalty may be imposed for early withdrawal. Not available for public units. Customers must maintain their primary checking account at Flagstar Bank and conduct an average of 15 monthly transactions or at least \$250 in recurring ACH transactions per month to qualify for the Loyalty Checking account rate. "Loyalty Checking account" rate offer cannot be combined with coupons or other special offers. Rate is effective for a limited time only and subject to change without notice. Certain restrictions may apply.

## Treasurer candidate presses for answers and reform

BY HUGH GALLAGHER  
OBSERVER STAFF WRITER

In 2004 Brendan Dunleavy as Wayne County auditor general did an audit of the Wayne County Delinquent Tax Revolving Fund. The audit began in 2002 and then at the request of the Treasurer's office was postponed and then restarted in 2003.



Dunleavy

According to the audit, released in June 2004, "the Treasurer's office has either not provided requested information in a timely fashion or not at all, which has significantly postponed our audit effort."

The report challenged the accounting practices used in the Treasurer's office and the awarding of no bid contracts and the use of wire transfers.

Now, Dunleavy is challenging longtime Wayne County Treasurer Raymond J. Wojtowicz for his seat and to get answers to those questions.

"When it came to getting information out of Mr. Wojtowicz, he wouldn't give me the information," Dunleavy said. "I found things that would make Kwame Kilpatrick blush."

Dunleavy was county auditor from 1997 to 2004 when he was forced from office. Dunleavy filed a whistleblower lawsuit against the county and eventually reached an out of court settlement with the county.

"No one has ever answered my questions," he said. "You had a situation where a guy was in a position for 31 years with absolute power, the operation needs to be revamped."

Wojtowicz said the audit was politically motivated and "wrong." (See related story.)

Dunleavy said he is running

### ABOUT THE CANDIDATE

**Age:** 48  
**Marital status:** married, wife Eileen, five children  
**Residence:** Plymouth  
**Party affiliation:** Republican  
**Profession:** Financial adviser, Michigan Financial Cos.  
**Education:** Master's degree in financial services, Walsh College; bachelor's degree in accounting, Michigan State University; CPA since 1987.  
**Background:** Wayne County auditor general 1997 to 2004

as a Republican to extend the campaign into November and make Wojtowicz confront the questions. He said he would have liked to have seen Wayne County Commissioner Phil Cavanagh defeat Wojtowicz in the primary.

"This is the first time he'll have to answer questions until the first week of November," he said. "By running as a Republican I could shed a different light on it then fellow Democrats could on problems in his operations. People should be aware of them."

Dunleavy said there is a major problem with the delinquent tax revolving fund, which is a series of funds set up annually to account for collections of delinquent tax payments.

"One of the major things that we discovered was that he was transferring money to the tune of \$4.6 million and \$3.8 million was going to a former employee of his," he said. "I asked for supporting documents. Not only were they wire transfers but they were being paid out of revenue, which short circuits expenses but also under represents revenue."

Dunleavy said such actions are hard to detect.

Dunleavy said contracts was

just one of many problems in the department.

"He doesn't have a policy in place or a system in place to handle the vacant buildings he's getting (from tax foreclosures). He's the largest slum landlord in Wayne County," he said.

Dunleavy said he would use a graphic imaging system to locate properties, determine where the city, county and state have properties. He said properties could be traded and then nearby properties could be bundled and sold together rather than sold at auction as is currently done.

Dunleavy said Wojtowicz was instrumental in getting the law changed on foreclosures. Previously, delinquent tax payers had five years to pay their taxes and were compensated for their houses after they were sold and taxes and fees paid. Now delinquent taxpayers have only two years to pay their taxes and all proceeds from the sale go to the county.

"He adamantly was after this law, he designed it and it's one of the things that's causing us major problems," Dunleavy said. "Why isn't he up in Lansing putting some sort of sunset provision on this?"

Dunleavy said Wojtowicz has done some good things. He said he has done a good job investing taxpayer dollars, receiving better than average returns on low-risk investments. He said he has also done a good job in keeping people with foreclosure problems in their homes, rather than adding to the county's vacant properties.

Dunleavy said he understands that his chances of winning in heavily Democratic Wayne County are slim to none, but that he's concerned about how the department is run. He said he wants more transparency, an end to "buddy contracts" and better accounting methods.

## Treasurer cites collection record, foreclosure help

BY HUGH GALLAGHER  
OBSERVER STAFF WRITER

A spike in tax foreclosures, a steep drop in investment markets and a huge deficit in the county budget have put a strain on the Wayne County treasurer's office.

Raymond Wojtowicz, who has been the treasurer for 32 years, has also been facing



Wojtowicz

some stiff competition in this year's election. In the Democratic primary, he faced a strong challenge from Wayne County Commissioner Phil Cavanagh of Redford, one of several candidates in the primary. In the general election, he faces former Wayne County Auditor General Brendan Dunleavy, a Republican.

Wojtowicz stands by his record, citing a high 90 percent collection rate on delinquent taxes while offering outreach programs to keep people facing tax foreclosures in their homes.

"Prior to today's economic conditions, we have been ahead of the curve," he said.

The Wayne County treasurer handles more than 850,000 taxable parcels in Wayne County, with more than half in the city of Detroit.

"Last year we had overwhelming amount of tax delinquencies compared to past years, frightening to an extent that the total aggregate delinquencies in dollar value was over \$300 million," he said.

Wojtowicz said that while he has been aggressive in

### ABOUT THE CANDIDATE

**Age:** 79  
**Marital status:** Married, five children, nine grandchildren  
**Residence:** Hamtramck  
**Party Affiliation:** Democrat  
**Education:** Graduate of St. Ladislaus High School, Great Lakes College  
**Profession:** Wayne County treasurer, 1976-present

pursuing delinquent taxes, his department has also offered help to those facing tax foreclosures. He said unlike mortgage foreclosures, the county doesn't put a sign up at a foreclosed property.

"Our outreach program has been moving forward so that over time we have developed a partnership with nonprofit organizations," he said.

Terrance Keith, deputy county treasurer who sat in with Wojtowicz on his interview, said that in November a supplement in the *Detroit Free Press* listed 18,000 parcels in foreclosure.

"From that list we have reconciled either by payment or hardship application, 78 percent of those parcels, some 3,800 by way of hardship applications or other arrangements made with our office," Keith said.

He said a lot of those properties were vacant, with about 1,600 occupied.

The county currently holds 8000 parcels. There is a procedure for auctioning the properties once they go into foreclosure. Owners have a two-year period to settle their tax debts. Keith said no occupied properties were auctioned this year.

Wojtowicz said the

county's budget problems have been affected by the current financial downturn. He said he has accepted the 10 percent cut in his department budget requested by County Executive Robert Ficano.

In 2004, then-county auditor general Dunleavy issued a scathing audit of the treasurer's Delinquent Tax Revolving Fund, charging accounting irregularities and questionable contracts. He said Wojtowicz refused to cooperate with the audit.

"He's wrong, he was wrong then and is even if he makes that statement today," Wojtowicz said.

Keith said Dunleavy was politically motivated because he supported an opponent of Wojtowicz.

"The treasurer has been audited three to four times since then in regard to what he alleged to complain about," Keith said.

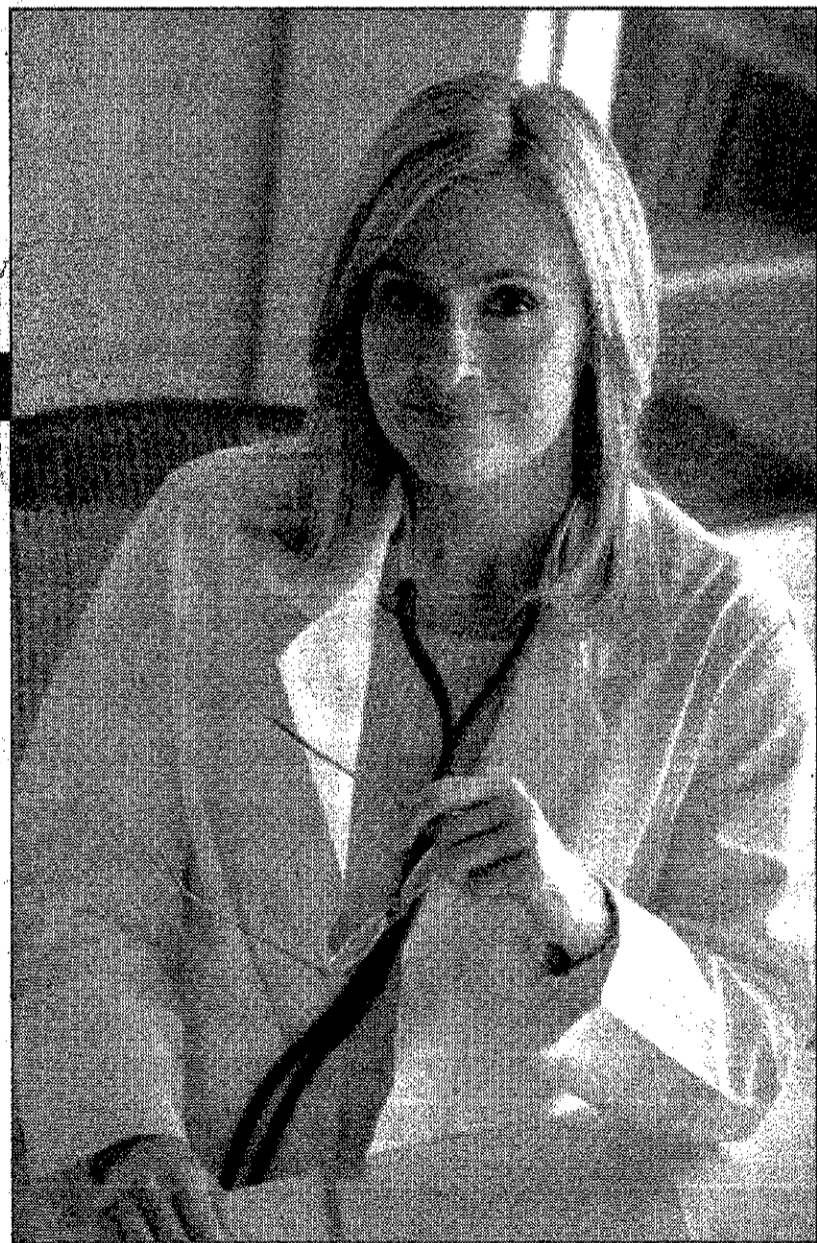
He added that practices at the office have been changed.

"In addition auditors have come through and given us very healthy reports," Wojtowicz said.

Wojtowicz said his department is looking at programs to use the vacant property in their possession. He said he has met with the director of the Urban Farming Program. Under that program, vacant lots could be used as small produce gardens. Some of the produce could then be donated to local soup kitchens and food banks.

Keith said the department is also trying to work with the county and city land banks to move some of the property.

hgallagher@hometownlife.com  
(734) 953-2149



## You have a choice.

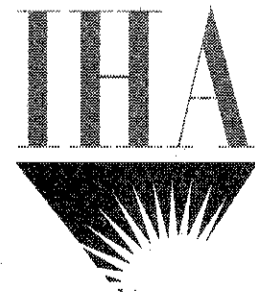
Do what thousands have done — choose an IHA doctor.

Did you know that IHA doctors:

- offer a personal and accessible approach to healthcare — providing you the best clinical care and outstanding patient service
- help guide you through the healthcare system — providing support and guidance for needed services
- are accessible 24/7, 365 days a year — providing extended office hours and After Hours Care, to meet your needs

IHA doctors are currently accepting new patients. To experience IHA's patient-centered approach, choose an IHA doctor today or select an IHA doctor during benefit enrollment.

Call 734-995-2950 or visit [IHAcare.com](http://IHAcare.com) for physicians, practice locations and helpful information on all of your medical needs.



# Current financial crisis shouldn't be compared to Great Depression

**Dear Rick: My portfolio has taken a beating over the last year. I've started to take more of an interest in my money. The articles I read compare what is happening today to the Great Depression. Do you believe the conditions today are similar to what they were before the Great Depression?**

There is no doubt we are going through difficult times. We have seen an unprecedented change in the financial markets, not only here but around the world. However, it is important to recognize that even though these are unique times, we have been through prior crises in the past.

Over the last 20 years we have seen the crash of 1987, the meltdown in the technology markets, the savings and loan crisis in the early 1990s and the terrorist attacks on 9/11. Although each one was somewhat unique, the common thread was that some commentary was comparing it to the Great Depression.

Although I don't know when this current crisis will end, there is very little similarity to the Great Depression. First, during the Great Depression unemployment was at 25 percent. And there was a 50 percent foreclosure rate. Although foreclosures have been on the rise, they don't come close to what was happening during the Great Depression. And although Michigan has the highest unemployment rate in the country, it basically is a third of what it was during the Great Depression.

At the time of the Great Depression, we did not have security laws to protect investors, nor did we have insured savings accounts through banks. Although our regulatory structure has changed dramatically over the last 20 years, in reality there were no regulations at the time of the Great Depression.

Another fundamental difference is today's economy is totally different. In the 1920s our economy was a manufacturing/agriculture

economy. Today, our economy is service-based and international in scope. We do not live in an American economy, we live in a world economy.

I believe it is irresponsible for people to compare the economy today to the economy back in the 1920s. Many commentators bring up the Great Depression because of the shock value.

I wish I could give you a date when the markets will turn around. I do know that we've gotten through financial crises in the past and there is no doubt that we will get through this one. The key is not to make short-term decisions for comfort that will cost you in the long run.

**Dear Rick: Like everyone else, I am nervous. I have a**

**401(k) plan for retirement and some IRAs. In about two years, my mortgage is going to adjust. I owe a little over \$100,000 on the home. I would like to pay the house off by the time the mortgage adjusts. I just received a settlement of about \$75,000. What should I do with the money? My mortgage interest rate for the next two years is 6.5 percent.**

Since your goal is to pay the house off over the next two years, use the \$75,000 to pay down the mortgage. This won't lower your monthly mortgage cost, however, the bulk of the money will no longer be used for interest but rather to pay down the principal. When the mortgage adjusts, you will have already paid off the mortgage or will owe a few remaining dollars.

Factoring in all the tax consequences, paying down the principal on the mortgage is the way to go.

**Rick Bloom** is a fee-only financial adviser. Observer & Eccentric readers can submit questions at [money-matters@hometownlife.com](mailto:money-matters@hometownlife.com). For more information, visit Rick's Web site at [www.bloomassetmanagement.com](http://www.bloomassetmanagement.com). You can hear Rick noon to 3 p.m. Sundays on WDTK 1400 AM.

**Money Matters**

**Rick Bloom**

unique times, we have been through prior crises in the past.

Over the last 20 years we have seen the crash of 1987, the meltdown in the technology markets, the savings and loan crisis in the early 1990s and the terrorist attacks on 9/11. Although each one was somewhat unique, the common thread was that some commentary was comparing it to the Great Depression.

Although I don't know when this current crisis will end, there is very little similarity to the Great Depression. First, during the Great Depression unemployment was at 25 percent. And there was a 50 percent foreclosure rate. Although foreclosures have been on the rise, they don't come close to what was happening during the Great Depression. And although Michigan has the highest unemployment rate in the country, it basically is a third of what it was during the Great Depression.

At the time of the Great Depression, we did not have security laws to protect investors, nor did we have insured savings accounts through banks. Although our regulatory structure has changed dramatically over the last 20 years, in reality there were no regulations at the time of the Great Depression.

Another fundamental difference is today's economy is totally different. In the 1920s our economy was a manufacturing/agriculture

## Contest highlights nature photos

Do you have an eye-catching photo taken at a Huron-Clinton Metropark? Enter it into the 2008 Nature Photography Contest held by the Huron-Clinton Metroparks and the West Oakland Camera Club.

Photo entries will be accepted through Nov. 3. Contest rules and entry information are available at [www.metroparks.com](http://www.metroparks.com).

Anyone can enter up to four images in any of the following categories: wildlife, plant life, scenic and recreation/education. Photographers will be grouped by age: 5-12, 13-17 and adults.

Color or black and white digital images will be accepted, and must be at least six megapixel resolution. Cell phone photos will not be accepted. All photo entries must have been taken within the Huron-Clinton Metroparks.

Entries will be judged by members of the West Oakland Camera Club, who publish in *Audubon*, *Sierra Club* and *National Geographic*.

Winning photos will be part of a traveling display within the Metroparks. Prizes will be awarded, including the grand prize, an educational photo shoot at Kensington Metropark with a nature photographer from the West Oakland Camera Club.

Located along the Huron and Clinton rivers, the Metroparks provide a natural oasis from urban and suburban life as well as year-round recreational activities and events. The Metroparks consist of 13 parks covering nearly 24,000 acres,

**verizon wireless**

# Don't miss out!!!

Come in before October 13 for great deals on these Samsung phones!

**Samsung Alias™**  
HIGH-POWERED MINI MESSAGING CENTER  
**\$49.99**  
\$99.99 2-yr. price – \$50 mail-in rebate debit card. With new 2-yr. activation.  
> Awesome dual-flip design  
> Ultra-slim QWERTY keyboard

**Samsung Glyde™**  
THE BEST OF BOTH AND QWERTY  
**\$79.99**  
\$129.99 2-yr. price – \$50 mail-in rebate debit card. With new 2-yr. activation on a Nationwide Calling Plan.  
> Get V CAST Music with Rhapsody® (subscription, wireless and PC downloads)  
> Large slide-out QWERTY for texting on the fly

**Buy ANY phone \$29.99 or higher**  
\$79.99 2-yr. price – \$50 mail-in rebate debit card. With new 2-yr. activation per phone.

after 2 lines for \$69.99 Monthly Access on a Family SharePlan® (Activation fees, taxes and other charges apply.)  
With a new 1- or 2-yr. Agmt. per line.

## Switch now and get America's Most Reliable Wireless Network.

Call 1.800.2BUY.VZW

Click [verizonwireless.com](http://verizonwireless.com)

any store

**VERIZON WIRELESS COMMUNICATIONS STORES**

- |                                                                                                                                                                                                                                                                                                                                                                                                                                                                                                                                                                                                                                                                      |                                                                                                                                                                                                                                                                                                                                                                                                                                                                                                                                                                                                                            |                                                                                                                                                                                                                                                                                                                                                                                                                                                                                                                                                                                                                                                                    |                                                                                                                                                                                                                                                                                                                                                                                                                                                                                                                                    |                                                                                                                                                                                                                                                                                                                                                                                                             |                                                                                                                                                                                                                                                                                                                                                                                                                                                                                                                                                                                                        |                                                                                                                                                                                                                                                                                                                                                                                                                                                                                                                                                                                                                  |                                                                                                                                                                                                                                                                                                                                                                                                                                                                                                            |
|----------------------------------------------------------------------------------------------------------------------------------------------------------------------------------------------------------------------------------------------------------------------------------------------------------------------------------------------------------------------------------------------------------------------------------------------------------------------------------------------------------------------------------------------------------------------------------------------------------------------------------------------------------------------|----------------------------------------------------------------------------------------------------------------------------------------------------------------------------------------------------------------------------------------------------------------------------------------------------------------------------------------------------------------------------------------------------------------------------------------------------------------------------------------------------------------------------------------------------------------------------------------------------------------------------|--------------------------------------------------------------------------------------------------------------------------------------------------------------------------------------------------------------------------------------------------------------------------------------------------------------------------------------------------------------------------------------------------------------------------------------------------------------------------------------------------------------------------------------------------------------------------------------------------------------------------------------------------------------------|------------------------------------------------------------------------------------------------------------------------------------------------------------------------------------------------------------------------------------------------------------------------------------------------------------------------------------------------------------------------------------------------------------------------------------------------------------------------------------------------------------------------------------|-------------------------------------------------------------------------------------------------------------------------------------------------------------------------------------------------------------------------------------------------------------------------------------------------------------------------------------------------------------------------------------------------------------|--------------------------------------------------------------------------------------------------------------------------------------------------------------------------------------------------------------------------------------------------------------------------------------------------------------------------------------------------------------------------------------------------------------------------------------------------------------------------------------------------------------------------------------------------------------------------------------------------------|------------------------------------------------------------------------------------------------------------------------------------------------------------------------------------------------------------------------------------------------------------------------------------------------------------------------------------------------------------------------------------------------------------------------------------------------------------------------------------------------------------------------------------------------------------------------------------------------------------------|------------------------------------------------------------------------------------------------------------------------------------------------------------------------------------------------------------------------------------------------------------------------------------------------------------------------------------------------------------------------------------------------------------------------------------------------------------------------------------------------------------|
| <p><b>ALLEN PARK</b><br/>3128 Fairlane Dr., Fairlane Green 313-271-9255</p> <p><b>AUBURN HILLS</b><br/>Great Lakes Crossing Mall 248-253-1799</p> <p><b>BRIGHTON</b><br/>8159 Challis, Ste. C (off Grand River, in front of Target) 810-225-4789</p> <p><b>CANTON</b><br/>42447 Ford Rd. (corner of Ford &amp; Lilley Rds., Canton Corners) 734-844-0481</p> <p><b>CLINTON TOWNSHIP</b><br/>17370 Hall Rd. (Partridge Creek Mall) 586-228-4977</p> <p><b>DEARBORN</b><br/>24417 Ford Rd. (just west of Telegraph) 313-278-4491</p> <p>Fairlane Mall (3rd floor next to Sears) 313-441-0168</p> <p><small>IN COLLABORATION WITH</small><br/><b>Alcatel Lucent</b></p> | <p><b>DETROIT</b><br/>14126 Woodward (Model T Plaza) 313-869-7392</p> <p><b>300 Renaissance Center</b><br/>(level 1 between towers 200 &amp; 300) 313-567-4055</p> <p><b>FARMINGTON HILLS</b><br/>31011 Orchard Lake Rd. (southwest corner of Orchard Lake Rd. &amp; 14 Mile Rd.) 248-538-9900</p> <p><b>FENTON</b><br/>17245 Silver Pkwy. (in the Sears Plaza) 810-629-2733</p> <p><b>FT. GRATIOT</b><br/>4129 24th Ave. 810-385-1231</p> <p><b>LAKE ORION</b><br/>2531 S. Lapeer Rd. (Orion Mall 2 miles north of the Palace) 248-393-6800</p> <p><b>LIVONIA</b><br/>29523 Plymouth Rd. (at Middlebelt) 734-513-9077</p> | <p><b>MONROE</b><br/>2161 Mall Rd. (in front of Kohl's) 734-241-4099</p> <p><b>NORTHVILLE</b><br/>Three Generations Plaza 20580 Haggerty Rd. 734-779-0148</p> <p><b>NOVI</b><br/>43025 12 Mile Rd. (Twelve Oaks Service Dr. north of Sears) 248-305-6600</p> <p>Twelve Oaks Mall (lower level play area)</p> <p><b>PONTIAC/WATERFORD</b><br/>454 Telegraph Rd. (across from Summit Place Mall) 248-335-9900</p> <p><b>ROCHESTER HILLS</b><br/>3035 S. Rochester Rd. (at Auburn Rd.) 248-853-0550</p> <p><b>ROYAL OAK</b><br/>31941 Woodward Ave. (at Normandy) 248-549-4177</p> <p><b>ST. CLAIR SHORES</b><br/>26401 Harper Ave. (at 10 1/2 Mile) 586-777-4010</p> | <p><b>SOUTHFIELD</b><br/>28117 Telegraph Rd. (south of 12 Mile Rd.) 248-358-3700</p> <p><b>STERLING HEIGHTS</b><br/>45111 Park Ave. (M-59 &amp; M-53, Utica Park Plaza) 586-997-6500</p> <p>Lakeside Mall (lower level, Sears court)</p> <p><b>TAYLOR</b><br/>23495 Eureka Rd. (across from Southland Mall) 734-287-1770</p> <p><b>TROY</b><br/>1913 E. Big Beaver Rd. (Troy Sports Center) 248-526-0040</p> <p>Oakland Mall (next to food court)</p> <p><b>WARREN</b><br/>5745 Twelve Mile Rd., Heritage Village 586-578-0955</p> | <p><b>WESTLAND</b><br/>35105 Warren Rd. (southwest corner of Warren &amp; Wayne Rds.) 734-722-7330</p> <p>OR VISIT THE VERIZON WIRELESS STORE AT <b>CIRCUIT CITY AUBURN HILLS</b></p> <p><b>NEW! BLOOMFIELD TOWNSHIP</b></p> <p><b>BRIGHTON DEARBORN LAKESIDE</b></p> <p><b>NEW! MADISON HEIGHTS</b></p> <p><b>NOVI</b></p> <p><b>NEW! ROCHESTER HILLS</b></p> <p><b>ROSEVILLE TAYLOR TROY WESTLAND</b></p> | <p><b>CANTON Cellular and More</b><br/>734-404-0191 734-981-7440</p> <p><b>CLARKSTON Cellular Technologies</b><br/>248-625-1201</p> <p><b>CLAWSON Communications USA</b><br/>248-280-6390</p> <p><b>COMMERCCE Cellular Source</b><br/>248-360-9400</p> <p>Wireless Tomorrow 248-669-1200</p> <p><b>FARMINGTON HILLS Cellular City</b><br/>248-848-8800</p> <p><b>FERNDALE Communications USA</b><br/>248-542-5200</p> <p><b>FT. GRATIOT Wireless Solutions</b><br/>810-385-3400</p> <p><b>GROSSE POINTE Authorized Cellular</b><br/>313-417-1000</p> <p><b>LIVONIA Multilinks</b><br/>248-444-6440</p> | <p><b>MACOMB Authorized Cellular</b><br/>586-566-8555</p> <p><b>MONROE 2B Mobile</b><br/>734-240-0388</p> <p><b>Herkimer Radio</b><br/>734-242-0806</p> <p><b>Herkimer Too</b><br/>734-384-7001</p> <p><b>MT CLEMENS Authorized Cellular</b><br/>586-468-7300</p> <p><b>OXFORD Wireless Network</b><br/>248-628-8400</p> <p><b>PLYMOUTH 20/20 Communications</b><br/>734-456-3200</p> <p><b>Wireless USA</b><br/>734-414-9510</p> <p><b>ROSEVILLE Authorized Cellular</b><br/>586-293-6664</p> <p><b>ROYAL OAK Cellular Cellutions</b><br/>248-582-1100</p> <p><b>Fusion Communications</b><br/>248-549-7700</p> | <p><b>SOUTHFIELD Wireless USA</b><br/>248-395-2222</p> <p><b>STERLING HEIGHTS Authorized Cellular</b><br/>586-795-8610</p> <p><b>Wireless Network</b><br/>586-997-1777</p> <p><b>TROY The Wireless Shop</b><br/>248-458-1111</p> <p><b>UTICA Mobile2Mobile Wireless</b><br/>586-739-9977</p> <p><b>WARREN Multilinks</b><br/>586-497-9800</p> <p><b>Wireless Network</b><br/>586-573-7599</p> <p><b>WEST BLOOMFIELD Global Wireless</b><br/>248-681-7200</p> <p><b>WIXOM Auto One</b><br/>248-960-0500</p> |
|----------------------------------------------------------------------------------------------------------------------------------------------------------------------------------------------------------------------------------------------------------------------------------------------------------------------------------------------------------------------------------------------------------------------------------------------------------------------------------------------------------------------------------------------------------------------------------------------------------------------------------------------------------------------|----------------------------------------------------------------------------------------------------------------------------------------------------------------------------------------------------------------------------------------------------------------------------------------------------------------------------------------------------------------------------------------------------------------------------------------------------------------------------------------------------------------------------------------------------------------------------------------------------------------------------|--------------------------------------------------------------------------------------------------------------------------------------------------------------------------------------------------------------------------------------------------------------------------------------------------------------------------------------------------------------------------------------------------------------------------------------------------------------------------------------------------------------------------------------------------------------------------------------------------------------------------------------------------------------------|------------------------------------------------------------------------------------------------------------------------------------------------------------------------------------------------------------------------------------------------------------------------------------------------------------------------------------------------------------------------------------------------------------------------------------------------------------------------------------------------------------------------------------|-------------------------------------------------------------------------------------------------------------------------------------------------------------------------------------------------------------------------------------------------------------------------------------------------------------------------------------------------------------------------------------------------------------|--------------------------------------------------------------------------------------------------------------------------------------------------------------------------------------------------------------------------------------------------------------------------------------------------------------------------------------------------------------------------------------------------------------------------------------------------------------------------------------------------------------------------------------------------------------------------------------------------------|------------------------------------------------------------------------------------------------------------------------------------------------------------------------------------------------------------------------------------------------------------------------------------------------------------------------------------------------------------------------------------------------------------------------------------------------------------------------------------------------------------------------------------------------------------------------------------------------------------------|------------------------------------------------------------------------------------------------------------------------------------------------------------------------------------------------------------------------------------------------------------------------------------------------------------------------------------------------------------------------------------------------------------------------------------------------------------------------------------------------------------|

\*Our Surcharges (incl. Fed. Univ. Svc. of 11.4% of interstate & int'l telecom charges (varies quarterly), 7¢ Regulatory & 85¢ Administrative/line/mo., & others by area) are not taxes (details: 1-888-684-1888); gov't taxes & our surcharges could add 9%–33% to your bill. Activation fee/line: \$35 (\$25 for secondary Family SharePlan lines w/ 2-yr. Agmts.). Activation fee/line: \$35 (\$25 for secondary Family SharePlan® lines w/ 2-yr. Agmts.).

IMPORTANT CONSUMER INFORMATION: Subject to Customer Agmt, Calling Plan, rebate form & credit approval. Up to \$175 early termination fee/line & other charges. Offers and coverage, varying by service, not available everywhere. Rhapsody and the Rhapsody logo are registered trademarks of RealNetworks, Inc. Device capabilities: Add'l charges & conditions apply. Rebate debit card takes up to 6 weeks & expires in 12 months. Limited-time offers. While supplies last. Network details, coverage maps & V CAST Music w/ Rhapsody subscription details at [verizonwireless.com](http://verizonwireless.com). © 2008 Verizon Wireless.

# Troupe brings 'Charlie Brown' to stage

The legendary work of cartoonist Charles M. Schulz comes to life this week when the Canton Premiere Players present "Charlie Brown" at the Riverside Arts Center, 76 N.

Huron in Ypsilanti. The production, featuring local high school and college students, takes place Oct. 16-18 at 8 p.m., with a 2 p.m. matinee on Sunday, Oct. 19.

Plymouth High School senior Kimmy Elliott takes on the leading lady role as Lucy Van Pelt opposite Gary Clayton, a Crestwood High School senior from Dearborn, in the

title role. Other cast members include Brandon Wesenberg as Linus Van Pelt, Aubrey Donnell as Sally Brown, John Ellett as Schroeder, former Plymouth-Canton student Monica Williamson as Peppermint Patty, Will Smith as Franklin and Caleb Kruzal, a student at Washtenaw Technical Middle College, as Snoopy.

Tickets are \$10 for students and seniors with valid ID and \$12 for adults. Part of the proceeds will be donated to "Project Linus." "Project Linus is a national organization that gives comfort to children who are seriously ill, traumatized, or otherwise in need through the gifts of new, handmade blankets and afghans, lovingly created by volunteer 'blanketeers,'" said Jami Kraus, who



The Canton Premiere Players present "Charlie Brown" at the Riverside Arts Center, 76 N. Huron in Ypsilanti Oct. 16-18 at 8 p.m., with a 2 p.m. matinee on Sunday, Oct. 19.

will direct the play. "Since starting up in 1995, "Project Linus" has distributed more than two million blankets to children in need. "We will be accepting donations for this organization during intermission and a percent of ticket proceeds from Saturday's show will be donated as well," said Kraus. "We will also be accepting blankets." More information about "Project Linus" can be found at www.projectlinus.org

**SPOTLIGHT ON YOUR DENTAL HEALTH**

Presented by **Andrea S. Vivian, D.D.S.**

**THE GUM DISEASE/DIABETES LINK**

Several recent studies suggest that by taking better care of their teeth and gums, people with type 2 diabetes can exert better control over the disease. According to the studies, type 2 diabetics who have gum disease are more likely to develop worsened glycemic control as well as have a higher risk for end-stage kidney disease. Numerous studies point to the fact that good glycemic control lessens the development and progression of diabetes' complications. With this in mind, when glycemia is difficult for diabetes patients to control, they might want to consider scheduling a visit with the dentist, who can check for signs of gum disease. Diagnosis and treatment may help keep glucose levels under control.

Although gingivitis and periodontal disease are caused by plaque, other factors can increase the risk, severity, and speed of their development. These factors include disease, medications, smoking, impacted food, poorly fitting bridges, defective restorations, poor diet, and bad habits. You can still achieve good oral health, though, by following your dentist's advice and practicing preventive hygiene. If you are new to the Plymouth area and haven't found the right dentist yet for your family, we invite you to call our office at **496 W. Ann Arbor Trail, Ste. 201, Plymouth, for the sunniest smiles possible. Call us 734-453-9413 for an appointment.**

P.S. Glycemia refers to the concentration of sugar (glucose) in the bloodstream.

**PLYMOUTH TOWNSHIP POLICE DEPT. 734-354-3232 NOTICE OF PUBLIC SALE**

Notice is hereby given that on 10/17/08 at 10:00 a.m. at Mayflower Auto Transport, 1179 Starkweather, Plymouth, MI 48170, a public auction of the following:

1996 Plymouth	Neon	1PES27C1TD501469
1999 Chevrolet	Malibu	1G1NE52MXXY113754
1998 Ford	Escort	1FAFP13P7WW294013

Dated: 10/08/2008  
Publish: October 12, 2008

**PLYMOUTH DISTRICT LIBRARY PUBLIC NOTICE**

The Plymouth District Library Board will hold its REGULAR October meeting Tuesday, October 21, 2008 at 7:30 p.m. at 223 S. Main Street, Plymouth, Michigan 48170.

The Plymouth District Library will provide necessary reasonable auxiliary aids and services, such as signers for the hearing impaired and audio tape of printed materials being considered at the meeting, to individuals with disabilities at the meeting/hearing upon seven (7) days notice to the Plymouth District Library. Individuals with disabilities requiring auxiliary aids or services should contact the Plymouth District Library by writing or calling the following:

Barbara Kraft, Library Secretary  
Plymouth District Library  
223 S. Main Street  
Plymouth, MI 48170  
734-453-0750  
X217

Publish: October 12, 2008

**NOTICE OF PUBLIC SALE CITY OF PLYMOUTH, MICHIGAN**

Notice is hereby given that of pursuant to State Law 257.252, the following vehicle (s) will be sold at Public Sale at Mayflower Towing, 1179 Starkweather Rd., Plymouth, MI on the date and time below:

Monday, October 27th, 2008 7:00 a.m.

Vehicles:

Year	Make	Style/Model	Vin No.	Case No.
2001	Oldsmobile	4D Alero	1G3NF52E11C110047	08-1222
1997	Pontiac	2D Firebird	2G2FS22K8V2200908	08-2313
1994	Buick	4D Regal	2G4WB55L9R1430787	08-4294
2008	Dodge	4D Avenger	1B3LC76M48N619000	08-4364
1979	Chevrolet	2D Monte Carlo	1Z37J9K604465	08-5108

Inquiries regarding these vehicle should be directed to Officer Koval, City of Plymouth Police Department, 734-453-1234, ext. 536.

LINDA LANGMESSER  
City Clerk

Publish: October 12, 2008

**BALLOON**  
FROM PAGE A1

Students, who work in teams with one chosen as the team leader, learn that making changes is a process that needs to be done slowly and carefully. "It takes a lot of steps, you have to make one change at a time," said Hannah Sterling, 9, of Canton. "If you change more than one thing at a time you don't know what (the problem) is."

"Today we were successful," she said. "We changed the axle so it would go straighter, and we finally got it to go straight." Anne Michelis, a quality engineer at Yazaki, said she didn't like science until she was in college. But, she likes the AWIM program because it teaches students at a young age that her profession can be fun.

"It's a lot of hands-on instead of just having to sit and read books," said Michelis, 34. "It gives them ownership and gets them motivated to move on to other science projects."

"They learn to listen, work together as a team, listening to authority from team leaders and time management," she said. "I think it will draw more

interest to science and math." Volunteer engineers from nine area companies give an hour per week for a two-month span to mentor the young students. It's enough time to make an impact.

"The engineers have been so supportive and work really well with the kids, really bringing it to life for them," said Joyce Napier, fifth-grade teacher at Gallimore. "The kids get to see real-life application to what I'm trying to teach them, while at the same time having fun."

"It's been a real struggle on learning how to work together, which is perfect for the real-life situation," she said. "I want to teach them real skills they'll need to be successful in life ... math, science, measuring, predicting, adjusting. It will help them with their lives, their jobs and their careers."

Teaching partner Vickie Krause said the AWIM program is a look at science the way it is in the real world. "You've got your science knowledge, which is air resistance and acceleration force," said Krause. "They learn those things, but now they have to apply their knowledge. And, when they use it correctly, it will match the goals ... for the car to go straight."

Along with volunteer engi-  
neers, materials are paid for by the Society of Engineers Foundation, resulting in no cost to the school district. Don Manvel, CEO of AVL North America, is also a member of the SAE Foundation board.

"We like to be involved in win-win situations," said Manvel. "We're helping young people get interested in math and science, which is important to life. It's infectious for the kids to have real engineers come in, and for the engineers to connect with the teacher and teach to the real world."

If the United States doesn't start finding more qualified engineers, AWIM program manager Matt Miller said the results could be disastrous. "We have an aging work force in science and engineering, and in about 15-17 years we'll have a huge deficit in the sciences and engineering professions because we aren't growing the right amount of talent," Miller said. "We have a crisis on our hands and the way to address it is to engage kids as young as possible and expose them to science and math. If they don't have that exposure, they aren't going to see engineering and science as an option."

tbruscato@hometownlife.com  
(734) 953-2152

**Announcing!**

**CORE Rhythms**

NOW AT **Arthur Murray!**

**FIRM UP FAST**  
Losing inches has never been so fast... and so much fun! The passion and technique of **World Champion Rhythm & Latin dancers**, packed into the perfect fitness system. You'll love it and *anyone can do it.*

**TRIM DOWN NOW**  
Core Rhythms is the revolutionary exercise concept that uses **sexy Latin dance moves** to raise your heart rate, while toning and tightening your entire core. You'll be swept away while getting a 360° total core workout.

**CALL TODAY**  
Certified Core Rhythm instructors are ready, exclusively at **Arthur Murray Dance Studios**. Call today and schedule your first session.

Core Rhythms Creators  
Julia Powers  
12 time U.S. Champion  
&  
Joanna Kitzitz  
10 time International Champion

**DanceSport FITNESS**

**Arthur Murray**  
Franchised Dance Studios

**NO Contracts! NO Monthly Payments! NO Membership Fees!**  
Pay only for the sessions you use! Call now to schedule your FREE introductory workout!

Classes Every Tuesday, Thursday & Saturday 9:30am  
**Drop-Ins Welcome • Start Anytime**

**Arthur Murray**  
Franchised Dance Studios

42000 Six Mile Rd., Suite 250 • Northville  
(between Northville Rd. & Haggerty)  
**248.349.1133**

**Been A While Since You've Been Carded?**

Open An Account At New Liberty Bank  
And We'll Give You A \$50 Gas Card!

Right now when you open a New Liberty Bank checking, savings, certificate of deposit or money market account, we'll reward you with a **\$50.00 gas card!** If you refer a friend who opens an account, you'll both receive one! Just bring this ad into the bank and we'll do the rest.

From great rates on consumer and business savings accounts, certificates of deposit and money market accounts, to an array of checking accounts, access to investment services\*\* and more, there's a solution to match your needs. Add free ATM access at 32,000 surcharge-free ATM's nationwide, and there's no reason to bank any place else. Visit us today... and bring a friend!

**FREE GAS CARD \$50.00**

**New Liberty Bank**  
1333 W. Ann Arbor Road  
Plymouth, MI 48170  
(734) 455-1511  
www.newlibertybank.com

\*Offer is available to individuals and small businesses without a New Liberty Bank checking, savings, certificate of deposit or money market account in the past 90 days. This is a limited time offer, subject to change. Call for details. Minimum deposit requirements for this promotion only are \$50.00 for business checking, \$100.00 for personal checking products, and \$1,000.00 for savings products. New Liberty Bank reserves the right to substitute a premium of equal value. The value will be reported to the recipient as interest income on Form 1099-INT. Card will be mailed 7-10 days after eligible account opening. Maximum of three cards per customer. Card depicted is not actual card awarded.

\*\*Investment and insurance products and services are offered through INFINEX INVESTMENTS, INC., member FINRA/SIPC. INFINEX and the Bank are not affiliated. Products and services made available through INFINEX are not insured by the FDIC or any other agency of the United States and are not deposits or obligations of nor guaranteed or insured by any bank or bank affiliate. These products are subject to investment risk, including the possible loss of value.

**FDIC**

# 'I hereby declare ...'

## New citizens take oath of allegiance

BY STACY JENKINS  
OBSERVER STAFF WRITER

Thomas Mathai's expectations of the United States were far different from what he found.

From Kerala, India, Mathai came to the U.S. 20 years ago, to study. He lived in Missouri, in America's heartland, and quickly realized he had found a second home in this new land.

"I came here with this 'Hollywood' view of the United States and it's completely different," said Mathai, who now lives in Farmington Hills with his wife, Sheena and two children. "I was completely blown away by the acceptance of the people here."

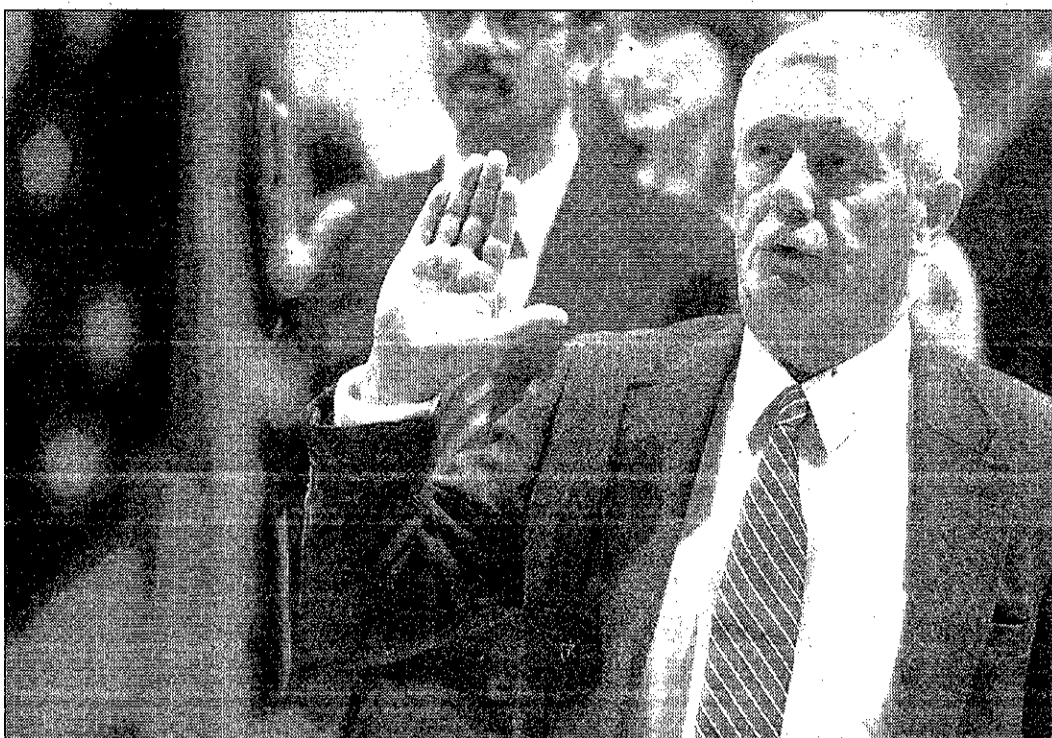
After two decades in America, "it was a natural progression" for him to seek U.S. citizenship.

He was among about 40 immigrants to take the oath of citizenship during a naturalization ceremony Friday at the Costick Center in Farmington Hills. The annual swearing-in event is part of the city's Heritage Festival, which culminates today, Sunday, with a free family festival, 12:30 - 5:30 p.m. at the Costick Center on 11 Mile, east of Middlebelt.

With a wide smile of excitement, Chinwe Ugonna, who came from Imo State, Nigeria, also became a U.S. citizen Friday morning — and, she knows exactly what she'll do first.

"I'm going to get a passport and I'm going to register to vote," she said.

Ugonna came to the U.S. nine years ago and went to college to become a nurse. The Farmington Hills woman is a registered nurse at Providence



Ken Christian takes the Oath of Allegiance during a naturalization ceremony Friday morning at the Costick Center in Farmington Hills. Christian immigrated to the United States from England.



Participants stand for the National Anthem, performed by Linnea Anderson during the start of a naturalization ceremony Friday morning at the Costick Center in Farmington Hills.

### Hospital.

"I felt there were more opportunities for me here," she said. "And, the ability to vote motivated me to apply to become a United States citizen."

She missed the voter registration deadline for the Nov. 4 election, but she's looking forward to voting in subsequent elections.

Mick Dedvukaj, district director for the U.S.

Citizenship and Immigration Services, could relate to the excitement the new citizens were feeling. The Albania-born Dedvukaj became a U.S. citizen 14 years ago.

"In this country, anything is possible," he said. "Being an American citizen is more than a piece of paper; it binds us together and we are instantly equal."

"There is no real difference between one who was born here and one who chose to come here."

The group of new citizens, sworn in by United State District Judge Robert H. Cleland, came from Lebanon, Iraq, New Zealand, Romania, Jordan, the Philippines, Canada, Yemen, Poland, China, Mexico, Togo, Honduras, Israel, India, South Korea, Bulgaria, England, Pakistan and Bangladesh.

sjenkins@hometownlife.com | (734) 953-2131

## ROUNDTABLE LAUDS LEADERS

The Michigan Roundtable for Diversity and Inclusion will honor Heaster Wheeler, executive director of the NAACP Detroit Chapter; the Rev. Dr. Daniel Krichbaum, chief operating officer for the State of Michigan; and Dr. Mary Sue Coleman, president of the University of Michigan, at its 61st Annual Humanitarian Tribute Thursday, Nov. 6, at the Marriott Hotel, Detroit.

Krichbaum and Coleman will receive the Humanitarian of the Year Award, and Wheeler will receive the William Beckham, Jr. Community Service Award. Dave Brandon, CEO of Domino's, will be the honorary chair of the event.

The Humanitarian Tribute will begin at noon. Tickets are \$120, and reservations are required by calling (313) 870-1500. The Tribute includes six levels sponsorship opportunities, as well as individual sponsorship tickets at \$250. For information, contact Erica VandenBerg at (313) 870-1500, Ext. 114, or vandenbergerica@gmail.com.

An exceptional home-like setting for Active/Alert, Memory Impaired, Frail/Recovering and Alzheimer's residents.

## Crystal Creek Assisted Living

STATE LICENSED

- 24 Hour Professional Staffing
- Private/Semi Private/Barrier Free
- 3 Home Cooked Meals A Day
- On Call Nurse Practitioner
- Planned Activities
- Wander Secured/Enclosed Courtyard
- Medication Management
- Daily Housekeeping & Laundry
- Incontinence Management
- Beauty & Barber Shop

### CANTON

**(734) 453-3203**

8121 Lilley, Located between Joy & Warren Roads

BRAND NEW OFFICE!

**Parkside DENTAL TEAM**

**the ZOOM**

Tooth Whitening Center

- Family & Cosmetic Dentistry
- Sedation Dentistry
- Dental Implants
- Invisalign Orthodontics

Se Habla Español  
Evening & Weekend Appointments

36444 West Warren in Westland  
www.parksidedentalteam.com  
Tel. (734) 261-6060  
Fax. (734) 261-6095

**NOW HIRING EXPERIENCED DENTAL ASSISTANTS**

## Fisher Funeral Home

Family Owned and Operated

Cremation  
Affordable Alternative

Basic Cremation  
\$695 \* inclusive of all fees & services  
\$200 additional for Memorial Services

Traditional Service with Cremation  
\$2195 includes Casket, viewing & service

Affordable traditional funerals tailored for any budget

24501 Five Mile Road • Redford  
313-535-3030  
www.fisherfuneralandcremation.com

THINKING ABOUT... **Our 34th Year!**

## UNITED TEMPERATURE

8919 MIDDLEBELT • LIVONIA  
**(734) 525-1930**

Quietest Units • Affordable Pricing • EZ Financing  
Quality Installation • Extended Warranties

**FREE ESTIMATES**

<b>ACCESSORIES FREE!</b> with purchase of Air Conditioner or Furnace: Lennox HC10-20 Air Cleaner (a \$299 value) or Digital Thermostat (a \$185 value)	<b>34 Years of Trust FREE!</b> <b>SECOND OPINION</b> A \$99 Value Before you replace your old furnace or air conditioner, let us give you our FREE second opinion!	<b>Service Savings FREE!</b> Heating Or Air Conditioning <b>SERVICE CALL</b> A \$39 Value Parts and labor extra.
--------------------------------------------------------------------------------------------------------------------------------------------------------------------	-----------------------------------------------------------------------------------------------------------------------------------------------------------------------------	------------------------------------------------------------------------------------------------------------------------------

UNITED TEMPERATURE 734-525-1930  
UNITED TEMPERATURE 734-525-1930  
UNITED TEMPERATURE 734-525-1930

Coupon must be presented at time of service. Cannot be combined with other offers. Coupon must be presented at time of service. Cannot be combined with other offers. Coupon must be presented at time of service. Cannot be combined with other offers.

## Mike's Marketplace

38000 Ann Arbor Rd. Livonia  
**(734) 464-0330**

Your Meat & Deli Supermarket

OPEN MON.-SAT. 9-9  
SUN. 9-7

### Mike's Fantastic Savings

SALE VALID OCT. 13 - OCT. 19

- Fresh Ground Beef **GROUND \$2.39 CHUCK** lb. Family Pack
- Boneless Skinless **CHICKEN BREAST \$1.49** lb. Family Pack
- Limit 2 With Additional \$25 Purchase
- USDA Boneless **ENGLISH CUT \$2.99 ROAST** lb. 2 Roast Family Pack
- Fresh Boneless Butterfly **PORK CHOPS \$3.49** lb.
- Fresh Ground Beef **GROUND \$2.79 SIRLOIN** lb. Family Pack
- USDA Boneless **NY STRIP \$4.99 STEAKS** lb. 6 Steak Value Pack
- Lean Boneless Delicious **CUBE STEAK \$3.49** lb.
- Bone In Center Cut **PORK CHOPS \$2.99** lb.

### From The Deli

- Lipari **ROAST BEEF \$5.99** lb.
- Lipari **MUENSTER CHEESE \$3.99** lb.

Check our website for additional specials! [mikes-marketplace.com](http://mikes-marketplace.com)

# Plakas Is The Most Qualified & Most Endorsed Candidate For 35th District Judge.



**Plakas**



**Barone**

<b>Legal Experience (Years)</b>	Prosecutor (13) Assistant City Attorney (13) Criminal Defense Attorney (13) Civil Litigator (13)	(0) (0) Criminal Defense Attny. (11) Civil Litigator (11)
<b>Cases Prosecuted</b>	Over 15,000	0
<b>Judicial Endorsements</b>	63 Judges (Including retiring 35th District Judge, Hon. John E. MacDonald)	3 Judges
<b>Law Enforcement Official Endorsements</b>	Kym Worthy Wayne County Prosecutor Warren Evans Wayne County Sheriff	None
<b>Police &amp; Firefighter Endorsements</b>	Canton Professional Fire Fighters Northville Township Professional Fire Fighters Police Officers Assoc. of Michigan MI Assoc. of Police Organizations Wayne County Sheriff Road Patrol	None
<b>Newspaper Endorsements</b>	Detroit Free Press Canton Observer Plymouth Observer Northville Record	Eagle/Journal
<b>Women Lawyers Association Of Michigan Rating for Judge</b>	"Outstanding"	Unrated
<b>Detroit Metropolitan Bar Association Rating for Judge</b>	"Well-Qualified"	"Qualified"
<b>Years of Local Residency</b>		
Western Wayne County	40	12
Within 35th District	13	12

\*Barone information obtained from candidate website on 10/5/08.



**Jim Plakas**  
for 35th District **JUDGE**

PICK PLAKAS NOVEMBER 4TH • [PlakasForJudge.com](http://PlakasForJudge.com)

Paid for by Committee to Elect James A. Plakas Judge • 18013 Stronchbrook Dr., Northville, MI 48168



# SEMCOG sets transportation goals through 2035


Local elected leaders of SEMCOG member communities are emphasizing preserving pavement and enhancing transit in developing Direction2035, the region's next long-range transportation plan extending through the year 2035. SEMCOG, the Southeast Michigan Council of Governments, adopted the following guide for spending transportation funds:

- Transit capital — 5.6 percent;
- Transit operations — 17.9 percent;
- Pavement — 23.8 percent;
- Bridges — 4.0 percent;
- Congestion relief — 7.6 percent;
- Safety — 0.6 percent;
- Nonmotorized transportation — 0.8 percent;
- Road operations — 39.7 percent.

This investment guide, combined with an analysis of transportation needs and priorities, will be used by SEMCOG and state and local road and transit agencies as projects are proposed for inclusion in Direction2035. SEMCOG is hoping to achieve results in the following performance levels:

- continued operation of the existing transit system plus construction and operation of three rapid transit lines;
- 69 percent of pavement in good or fair condition;
- 91 percent of bridges in good or fair condition;
- 2.8 hours of travel delay per 1,000 vehicle miles traveled;
- 0.74 fatalities per 100 million vehicle miles traveled;
- 58 percent of people and jobs within ½ mile of a non-motorized facility; and
- continued operation of the

existing road system. SEMCOG's elected leadership adopted a statement that they find current levels for both highway and transit systems to be woefully inadequate to support needed improvements and that they support efforts to raise additional revenues at both the state and federal levels to address needed transportation improvements in Southeast Michigan. Results of a Transportation Public Opinion Survey conducted in spring 2008, and public outreach meetings held in summer 2008 (both initiated by SEMCOG) were considered in the decisions made by SEMCOG's elected leaders. More information is available on SEMCOG's Web site at [www.semco.org/Long-RangeTransportationPlan.aspx](http://www.semco.org/Long-RangeTransportationPlan.aspx).



**Dentures**  
For every smile & every budget

- FREE denture consultations
- Same-day dentures with extraction
- Interest-free payment plans
- Most insurance plans accepted

allcare.com

**Allcare Dental & Dentures**  
We make seeing the dentist easy!

**DENTURES SAVE UP TO \$600** NEW PATIENT EXAM & X-RAYS FREE

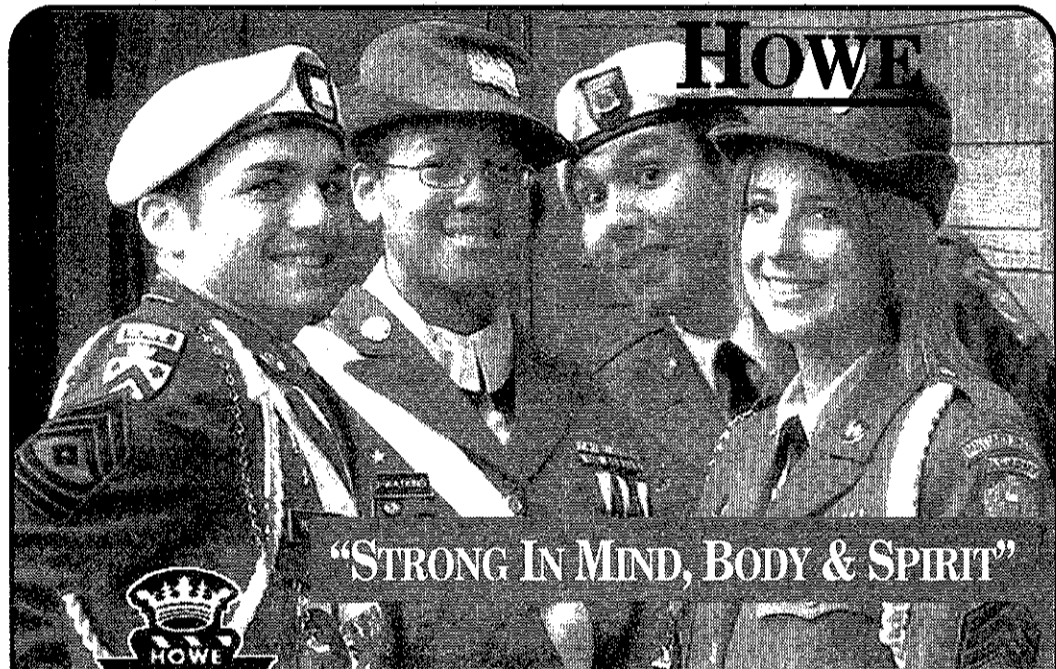
Auburn Hills 248 335-5700  
Livonia 734 522-3100  
Roseville 586 294-2030

7:00 AM - 9:00 PM MON-SAT  
Free 1 866 ALLCARE

\*Must mention this ad at time of initial consultation. Savings on ComfyChoice® brand denture sets. Free exam offer (\$129 value) for new patients 18 and older. Discounts may vary when combined with insurance and may not be used with other offers. See office for details. Services provided by licensed general dentist Robert S. Bates, DDS. Offer expires 11/7/08.



**Filter** PURE ENTERTAINMENT  
Let us entertain you! Every Thursday



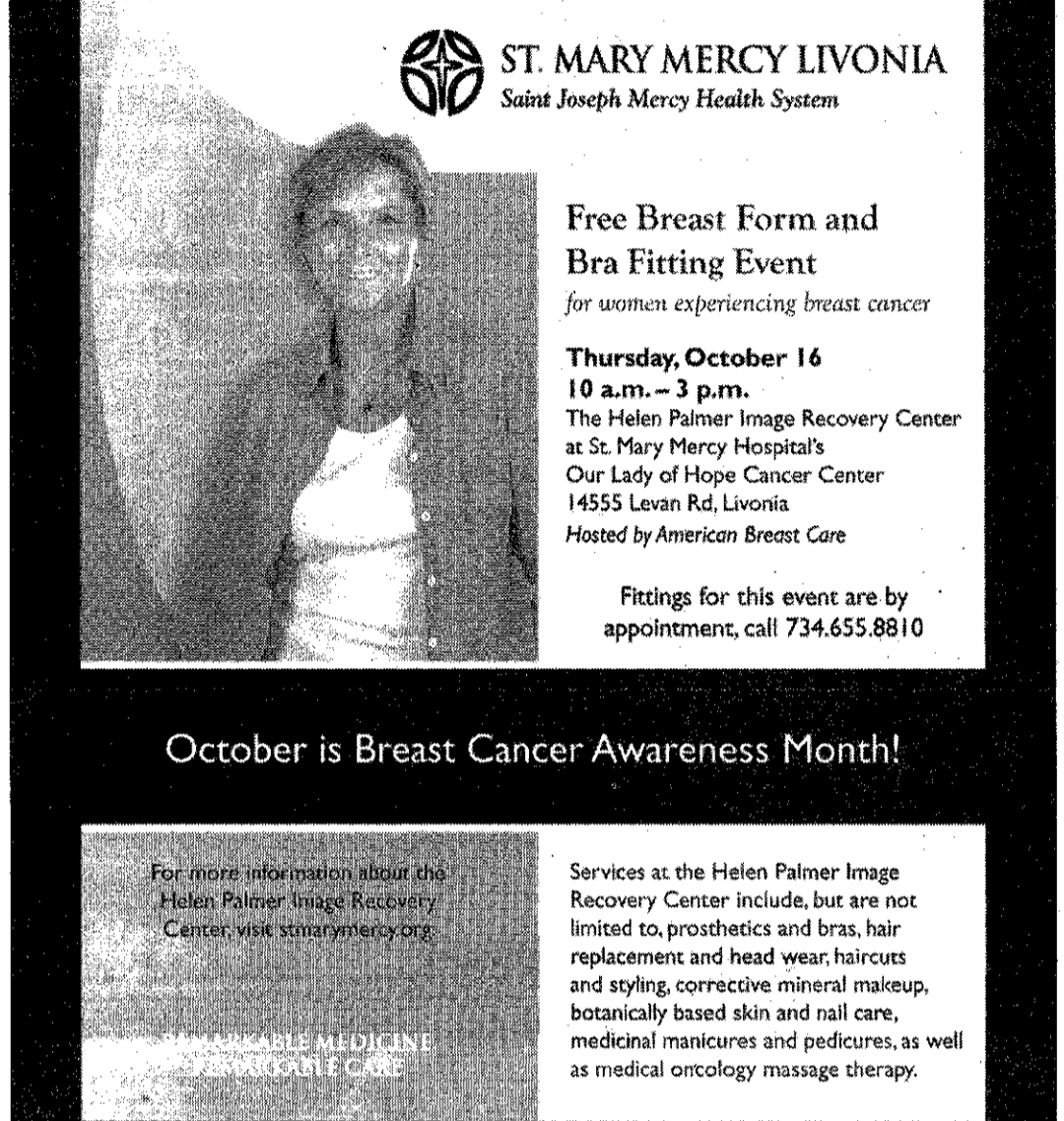
**HOWE**

"STRONG IN MIND, BODY & SPIRIT"

**You Are Invited**  
to an information reception  
Thursday, Oct. 23, 2008 7pm - 9pm  
Location:  
**The Inn at St. John's Golf & Conference Center**  
44045 Five Mile Road • Plymouth, MI 48170

Howe students achieve through self-confidence, self-discipline, leadership, respect and organization

Fully accredited by the NCA, ISACS and the State of Indiana  
1-888-GO-2-HOWE • (1-888-462-4693)  
[www.howemilitary.com](http://www.howemilitary.com)



**ST. MARY MERCY LIVONIA**  
Saint Joseph Mercy Health System

**Free Breast Form and Bra Fitting Event**  
for women experiencing breast cancer

**Thursday, October 16**  
10 a.m. - 3 p.m.  
The Helen Palmer Image Recovery Center at St. Mary Mercy Hospital's Our Lady of Hope Cancer Center  
14555 Levan Rd, Livonia  
Hosted by American Breast Care

Fittings for this event are by appointment, call 734.655.8810

October is Breast Cancer Awareness Month!

For more information about the Helen Palmer Image Recovery Center, visit [stmarymercy.org](http://stmarymercy.org).

Services at the Helen Palmer Image Recovery Center include, but are not limited to, prosthetics and bras, hair replacement and head wear, haircuts and styling, corrective mineral makeup, botanically based skin and nail care, medical manicures and pedicures, as well as medical oncology massage therapy.

**RETAIL THERAPY** at its best



Come to the Sugarloaf Art Fair to relieve your stress, forget politics and interact with hundreds of caring artists.

Find unique gifts  
Shop with friends  
Sample specialty foods  
Enjoy children's shows  
Leave refreshed

**Sugarloaf Art Fair**  
OCT 17, 18, 19, 2008

**Rock financial SHOWPLACE**  
Novi, MI (EXIT 160 OFF I-96)  
Fri. & Sat. 10-6, Sun. 10-5

**SugarloafArtFair.com**  
SUGARLOAF MOUNTAIN WORKS, INC. • 800-210-9900

DISCOUNT TICKETS  
Show info & exhibitor lists  
Directions and more at:

THE OBSERVER & ECCENTRIC  
MIRROR  
HOMETOWN LIFE

Will you capture your benefits across the board?

**A smart plan starts by knowing your Medicare options.**

Keeping track of Medicare benefits and your options to use them can be confusing. What health care services are covered? When are you eligible? What's the cost? Where can you receive treatment?

As an experienced provider of skilled nursing and rehabilitation care, we can help you make sense of your Medicare benefits from square one. And it's likely we can offer the services you need following a hospital stay. We'll gladly answer your questions about Medicare coverage and the services we provide. Start by calling and asking for our free brochure, "Capture Your Benefits From Medicare".

Heartland Health Care Center - Ann Arbor 734-975-2600  
Heartland Health Care Center - Canton 734-394-3100  
Marvin & Betty Danto Health Care Center 248-788-5300  
Heartland Health Care Center - Georgian Bloomfield 248-645-2900  
Heartland Health Care Center - Georgian East 586-778-0800  
Heartland Health Care Center - Plymouth Court 734-455-0510  
Heartland Health Care Center - Oakland 248-729-4400  
Heartland Health Care Center - West Bloomfield 248-661-1700  
Heartland Health Care Center - Allen Park 313-386-2150  
Heartland Health Care Center - Dearborn Heights 313-274-4600  
Heartland Health Care Center - Dorwin 248-476-0555  
Heartland Health Care Center - University 734-427-8270

**Heartland** Health Care Center [hcr-manorcare.com](http://hcr-manorcare.com)

## Dr. Allen Berman Can Help You Achieve The Smile You Have Always Dreamed Of...

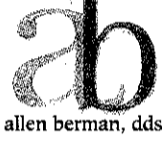


Dr. Allen Berman, Plymouth's premier Dentist specializing in Cosmetic and Family Dentistry, has helped countless patients find their best smiles with a wide range of services including:

- Porcelain Veneers
- Porcelain Crowns
- Non-Metal Fillings
- Several Options for Teeth Whitening
- Bonding
- Implants
- Invisalign

*~ New Patient Special ~*  
**FREE Tray Whitening**  
 to all new patients now thru December 31, 2008.

technology  
form  
beauty



allen berman, dds

**Dr. Allen Berman, D.D.S.**

9430 S. Main Street • Plymouth, MI 48170

**734-453-2200**

Visit our website at:

**www.drallenberman.com**

## Madonna Future Teachers give backpacks to Detroit children

Excitement was in the air at Sherrill Elementary in Detroit this week as Madonna University students in early childhood education brought smiles, stories and surprises to two pre-kindergarten classrooms.

Madonna students and faculty had stuffed 32 backpacks with school supplies and a Beanie Baby toy to help get the young learners off to the right start.

The backpacks and supplies were donated by Costco and the Beanie Babies were donated by the Society of Future Teachers and the Madonna Early Childhood Club.

Madonna students, Katie Adams of Livonia, Allison Hughes of Northville, Traci Anderson of Canton, and Paula Wilson of Garden City, distributed the stuffed backpacks. In addition, Anderson purchased napping mats and Tia Silva, director of Madonna's SWEEP program, donated winter hats and scarves for each child.

"Having Madonna University as a partner to Sherrill Elementary has meant the world to our students," said pre-k teacher and Madonna alumna Deborah Stanislowski.

The students curiously explored their backpacks as they pulled out journals, pencils, tissues, rulers, glue and construction paper.

"I am excited to bring my backpack home!" exclaimed Seanna Taylor, preschooler, when she realized that the gifts were for her to keep and use.

"Its cool!" said classmate Kayla Jackson about her new backpack.

Following the distribution of backpacks, the Madonna students read the children a story about apples and gave them their own box of crayons, donated by Madonna student Stephanie Tadjewski of Livonia, to color an apple picture. Afterwards, the Madonna students helped



Deborah Stanislowski's pre-kindergarten class after receiving their backpacks from Madonna students.



Madonna student Katie Adams of Livonia helping Sherrill Elementary student Kayla Jackson color her apple picture.

them make their own caramel apple treats.

"You are making memories for the children," Stanislowski told the future teachers.

The College of Education at Madonna University is dedicated to preparing students to be teachers and educational leaders.

"This regular, ongoing ser-

vice experience to Sherrill Elementary school provides our students with experience in the 'real' classrooms of today. They are able to put into practice the skills that they are learning in their Madonna University classes," said Yvonne Miller, instructor in Madonna's College of Education.

## PINNACLE HOMES

HOME TO THE HIGHEST STANDARDS



## Committed to You, Committed to Michigan!

### KIRKWAY ESTATES & BELLA TERRA OF NOVI

#### ▲ Northville/Novi

Single Family Homes FROM THE \$340's  
 2,800-3,600 sq. ft. 866-474-0444

### COUNTRY CLUB VILLAGE OF ROCHESTER HILLS

#### ▲ Rochester Hills

Single Family Homes FROM THE \$240's  
 1,900-3,000 sq. ft. 888-300-6251

### ENCLAVE AT RED RUN

#### ▲ Royal Oak

Single Family Homes FROM THE \$300's  
 2,300-3,000 sq. ft. 888-300-8869

### WOODWIND VILLAGE

#### ▲ South Lyon

Single Family Homes FROM THE \$280's  
 1,900-3,000 sq. ft. 888-300-8923

### GREENBRIAR

#### ▲ Commerce Twp.

Single Family Homes FROM THE \$190's  
 Duet Condominiums FROM THE \$190's  
 1,600-2,300 sq. ft. 888-300-1956

### PRESERVES OF ROMULUS

#### ▲ Romulus

Single Family Homes FROM THE \$160's  
 1,250-2,400 sq. ft. 888-300-8854

### THE HILLS OF OXFORD

#### ▲ Lake Orion Area

Attached Condominiums FROM \$98,000  
 Only 1 Home Left! 888-300-3898

*Best Homes,  
 Best Locations,  
 Best Value!*

For a Complete Listing of Pinnacle Homes Communities and Hours, Please Visit our Website at... [www.PinnacleBuilt.com](http://www.PinnacleBuilt.com)







## SPINAL STENOSIS

### SPINAL DECOMPRESSION

Call 1-800-468-3618 (24-hour recorded message) or go to [www.midschernerstation.com](http://www.midschernerstation.com)

# BBB warns about 'grandparent' scam

The Better Business Bureau is warning senior citizens to be aware of an emerging telephone scam that is preying on grandparents nationwide. BBB has recently received reports about grandparents from California to New Hampshire who thought they were aiding their grandchildren by providing money for an emergency situation but were in fact giving thousands of dollars to Canadian con artists.

Generally, the scam works like this — the grandparent receives a distressed phone call from who they believe is their grandchild. The supposed grandchild typically explains that they are traveling in Canada and have been arrested or involved in an auto accident and need the grandparent to wire money to post bail or pay for damages — usually amounting to a few thousand dollars. While many seniors have reported the scam without falling prey to it, unfortunately, many others have been victimized. One

well-meaning grandmother in Wisconsin sent \$15,000 to scammers, thinking she was helping a grandchild who had been in an auto accident. Another woman from Ann Arbor, was recently stopped by a wary bank teller from making a \$10,000 withdrawal that she planned to wire to con artists in Windsor, Ontario.

"This scam is just despicable because it preys on the emotions of seniors who want nothing more than to ensure the safety of their grandchildren," said Tim Burns, BBB spokesman. "The key to avoiding this scam is to remain calm despite the 'emergency' nature of the call and to verify the identity of the caller."

The Canadian Anti-Fraud Call Centre is reporting a significant increase in complaints for this scam. In 2007, the Centre received 128 complaints about this type of scam; since the beginning of this year, nearly 350 complaints have been filed, and about half were filed in July

and August alone. Law enforcement officials are not certain how perpetrators are obtaining phone numbers for so many senior citizens across the U.S. However, it is believed that scammers are most likely calling random numbers until they happen to reach a senior citizen. The scammers' basic tactic is to pose as a grandchild and let the unsuspecting grandparent fill in the blanks. For example, the scam caller might say, "It's me, your favorite grandchild," to which the grandparent will guess the name of the grandchild it sounds the most like, and then the call proceeds from there.

To protect themselves from this scam, and other scams that may use a distressed loved-one tactic, BBB is advising seniors to confirm the status of the individual by calling them directly or verifying the story with other family members before taking any further action.

BBB also advises that any

request to wire money through Western Union or MoneyGram should be seen as a "red flag" and an immediate tip-off that the call may be part of a scam. Funds sent via wire transfer are hard to track once received by scammers and are usually not recoverable by law enforcement or banking officials.

For anyone victimized by this type of distressed loved-one call, BBB recommends reporting the incident immediately to your local police department and contact your local Better Business Bureau by visiting [www.bbb.org](http://www.bbb.org) or calling (248) 644-9100. If there is a request to wire money to Canada, the Canadian Anti-Fraud Call Centre has established the PhoneBusters hotline and Web site to report such fraud. Reports can be filed easily online through the PhoneBusters site at: [www.phonebusters.com](http://www.phonebusters.com), or by phone, toll free at, (888) 495-8501.

Catch the bus to



Ann Arbor	Flint	St. Clair Shores
Bay City	Jackson	Sterling Heights
Brighton	Lansing	Troy
Burton	Livonia	Warren
Clinton Township	Pontiac	Westland
Clio	Roseville	Ypsilanti
	Saginaw	

For locations and reservations call Blue Lakes Charters & Tours 866-2-ROLLEM (866-276-5536)

### Earn extra money doing taxes.\*

H&R Block Income Tax Course

Ask about time and locations of the H&R Block Income Tax Course. H&R Block teaches tax preparation to everyone from beginner to CPAs. Successful students could go on to earn extra money as tax professionals.

Bilingual students encouraged to enroll.


For class times and locations visit [hrblock.com/taxcourses](http://hrblock.com/taxcourses) or call 866-853-4122

For Information Call 866-853-4122

Hurry, Classes Starting Now! Tuition is FREE\*\*

\* Enrollment restrictions may apply. Enrollment in, or completion of, H&R Block Income Tax Course is neither an offer nor a guarantee of employment. \*\* Fees for courses materials may apply. Valid at participating locations only. Void where prohibited.

Twinkle twinkle



for your shining star

Plymouth Jewelry & Gifts

620 Starkweather • Old Village  
Plymouth • 734-453-1860

The Plymouth Area's Most Trusted Jeweler

[www.plymouthjewelry.com](http://www.plymouthjewelry.com)

## Family Heating, Cooling & Electrical

Serving the entire metropolitan area.

North Woodward: 248-548-9555 • 313-782-0770  
Detroit: 313-782-0770

East: 734-237-3024 • West: 734-422-8080

**FURNACE SALES, SERVICE, PARTS & INSTALLATION**

We carry ALL premium name brand equipment so that we can meet your needs.


**FULL ELECTRICAL DEPARTMENT MASTER ELECTRICIANS!**

- Service changes & upgrades
- Outlets added • Generators
- Installation of fixtures, ceiling fans, etc.
- Wiring of hot water heaters, appliances, hot tubs & more
- Interior & exterior work

**FURNACE CLEANING & INSPECTION SPECIAL**

Reg. \$89.95...  
SAVE \$30.00...NOW ONLY: **\$59.95**

With this ad. Not valid with any other offers. Expires 12-31-08.

We Sell & Service: 

SENIOR COMMUNITY DESIGNED WITH YOU IN MIND

Offering the amenities that will enrich your life.

We have everything but YOU!

**ASHFORD COURT SENIOR RESIDENCE**

**- SPECIAL -**  
Move in by Dec. 31, 2008...  
Keep the 2008 Rental Price Thru Dec. 31, 2009!

Focus On The Future!

CALL 734-451-1155 TODAY  
And Join Us For Lunch And A Personal Tour

37501 Joy Road • Westland, Mi 48185

# Your money is safe with us.

3.25% 4.00%


Since our founding in 1871, we've always believed in conservative, careful business practices. After all, we know that it isn't just our money that's at stake, it's yours. But you don't have to take our word for it. Your deposits are insured by the Federal Deposit Insurance Corporation an additional \$150,000 per depositor - up to \$250,000 - until December 31, 2009. And our bank ratings are some of the strongest among financial institutions. Now more than ever, you need a bank you can count on and we're here to help. If you have any questions about your money, please stop by a branch, call 1-877-TOP-RATE or visit [charterone.com](http://charterone.com)

OUR CREDIT RATINGS

S&P A+

MOODY'S Aaa

FITCH DEPOSIT RATING AA

 Charter One

MEMBER FDIC

Member FDIC. All accounts subject to individual approval. See a banker for details and deposit insurance limitations. Offers valid in MI only. CD: Annual Percentage Yield (APY) is accurate as of this publication date. 4.00% APY applies to the 9-month term. Limited-time offer may be withdrawn at any time. This offer cannot be combined with any other CD offer. Once Gold Checking account with \$100 minimum opening deposit is required. Other rates and terms available. Minimum opening term deposit \$1,000. Penalty for early withdrawal. Select Money Market: APY based on collected balances for new personal accounts: 3.25% APY for balances greater than \$2,000.00, 3.25% APY for balances of \$250,000 to \$1,999,999, 3.25% APY for balances of \$100,000 to \$249,999, 3.25% APY for balances of \$50,000 to \$99,999, 2.75% APY for balances of \$10,000 to \$49,999, 0.00% APY for balances up to \$9,999. Personal accounts only. \$5,000.00 maximum deposit per customer. Fees may reduce earnings. APYs accurate as of this publication date and may change before or after account opening. Charter One is a division of RBS Citizens, N.A.

## Captivating Cuts Hair Salon

Invites you to join us for our

**GRAND RE-OPENING CELEBRATION**

Monday, October 20th from 6:30 PM - 8:30 PM

- \*Free Haircut Certificates for the first 50 people
- Drawings every 20 minutes for Gift Baskets
- Hairdressing Demonstration Refreshments
- 10% off already low-priced hair products

**GRAND PRIZE \$100.00 SALON GIFT CERTIFICATE!**

Browse our Boutique! • See you there!

[www.captivatingcuts.com](http://www.captivatingcuts.com)

17150 Farmington Road • Livonia, MI 48152 • 734-422-4449

Captivating Cuts is conveniently located in the strip mall at the NE corner of 6 Mile & Farmington. We are tucked back in the courtyard by Baskin Robbins.

\*FIRST TIME CLIENTS ONLY - TO BE REDEEMED AT A LATER DATE. BY APPOINTMENT ONLY.

## Sizzlin' Savings for your next visit

Buy 1 entree & 2 beverages

...GET 1 **FREE** ENTREE

**20% OFF ANY PURCHASE**

Value Menu Specials from \$3.99

One coupon, per check, per visit. Second item must be of equal or lesser value. Not valid with any other coupons or promotional offers. Coupon has no cash value. No change returned. Taxes and gratuity not included. Beverages not included. Valid at participating restaurants only. Selection and prices may vary. Only original coupons accepted - photocopied and internet printed or purchased coupons are not valid. No substitutions. ©2008 DFO, LLC. Printed in the U.S.A. Not valid with value menu items. Expires 12-31-08.

**Denny's**

39550 Ann Arbor Road at I-275  
Plymouth, MI 48170  
**734-459-0880**

Open 24 Hours

Coupons also valid at: Novi Denny's (12-Oaks Mall) and Southfield Denny's (Telegraph & 12 Mile)

**FREE RUBEN'S**

# SPORTS



Sunday, October 12, 2008

The Observer & Eccentric Newspapers

Ed Wright, editor (734) 953-2108 ewright@hometownlife.com

[www.hometownlife.com](http://www.hometownlife.com)

## Plymouth edges Franklin by a foot – Brindza's

BY ED WRIGHT  
OBSERVER STAFF WRITER

Plymouth kicker Kyle Brindza proved Friday night that it's difficult to ice a cool customer.

Brindza calmly drilled a 31-yard field goal with no time on the clock — seconds after Livonia Franklin tried to ice the sophomore by calling a pair of timeouts — to lift the Wildcats over the Patriots, 17-14, in a drama-filled contest played at Franklin.

The victory improved Plymouth's record to 6-1 overall and 4-1 in the Kensington Lakes Activities Association's South Division. More importantly, the tension-packed triumph earned the Wildcats a ticket to the

Division 1 playoffs, which will kick off on Halloween.

The Patriots' second-straight home setback dropped them to 4-3 overall and 3-2 in the division.

Brindza said he tried to keep his mind clear during the moments leading up to his game-winning kick.

"I've never been in a situation like that, with a kick to win a game," he admitted. "I just tried to block everything out, keep my eye on the ball and put it through."

One Wildcat did get iced Friday night — head coach Mike Sawchuk, who was the target of an ice-water dumping during the post-game celebration.

"It feels awesome," the second-

year coach said of his team's early playoff berth. "I'm very proud of this team and the coaches, who do a great job of preparing these kids. They do it the right way — teaching morals and values without compromising their integrity to play a kid if a kid screws up."

Sawchuk said his team's kicking game is solid for a reason.

"Kyle's a weapon, so we work a lot on snap-hold-kick, snap-hold-kick," he said. "We work on it three times a week and then Kyle will come in and work on his own."

Spearheaded by their incredibly elusive senior quarterback Mark McRobb, the Patriots nearly seized a late-game lead.

After Plymouth tied the game

at 14-all on quarterback Matt Skubik's 5-yard quarterback sneak, Franklin marched from its 20 to the Wildcat 4, where it faced a fourth-and-goal with 5:40 left.

With visions of a missed 27-yard field still fresh in his mind from earlier in the game, Franklin coach Chris Kelbert elected to forego a 21-yard field attempt for a shot at a touchdown.

It nearly worked, but McRobb's play-action pass bounced in and out of the hands of his intended target in the end zone.

McRobb racked up 147 yards rushing — most on spectacular, Steve Young-like scrambles — and

Please see **PLYMOUTH, B2**



ANDY RUBENSTEIN

Plymouth players mob kicker Kyle Brindza (27) Friday night after the sophomore drilled a 31-yard field goal with no time on the clock to defeat Livonia Franklin, 17-14.

## HOMECOMING FIREWORKS

### Stackhouse shines in Chiefs' 57-43 win

One-hundred points were scored in an athletic event at the Plymouth-Canton Educational Park Friday night — and basketball season doesn't even start for six more weeks.

The Canton and Livonia Churchill football teams lit up the Chiefs' homecoming night festivities with an entertaining (unless you're a defensive coordinator) 57-43 shootout won by the Chiefs.

The high-scoring triumph improved Canton's record to 6-1 overall and 4-1 in the Kensington Lakes Activities Association's South Division. It also earned the Chiefs a spot in next week's first-place cross-over game against KLAAs Central champ Novi and earned them a berth in the Division 1 playoffs.

The Chargers slipped to 2-5 and 1-4, respectively.

The game featured nearly 1,000 yards in total offense between the two teams as Canton amassed a total of 532, including 496 on the ground led by Davion Stackhouse's 204 yards on only seven carries. Stackhouse also scored five touchdowns — all coming in the second half.

Junior quarterback Kevin Delapaz added 145 yards

on 15 carries and completed only one pass, but it was a big one, a 36-yard TD toss on fourth-and-8 to Stackhouse with only 59 seconds remaining to salt the game away.

Churchill racked up 440 total yards, including 338 in the air as starting quarterback Grant Morgan completed 17-of-24 for 311 yards and three TDs before going out late in the game with an injury. His favorite receiver was Jeff Ricketts, who caught 10 passes for 214 yards.

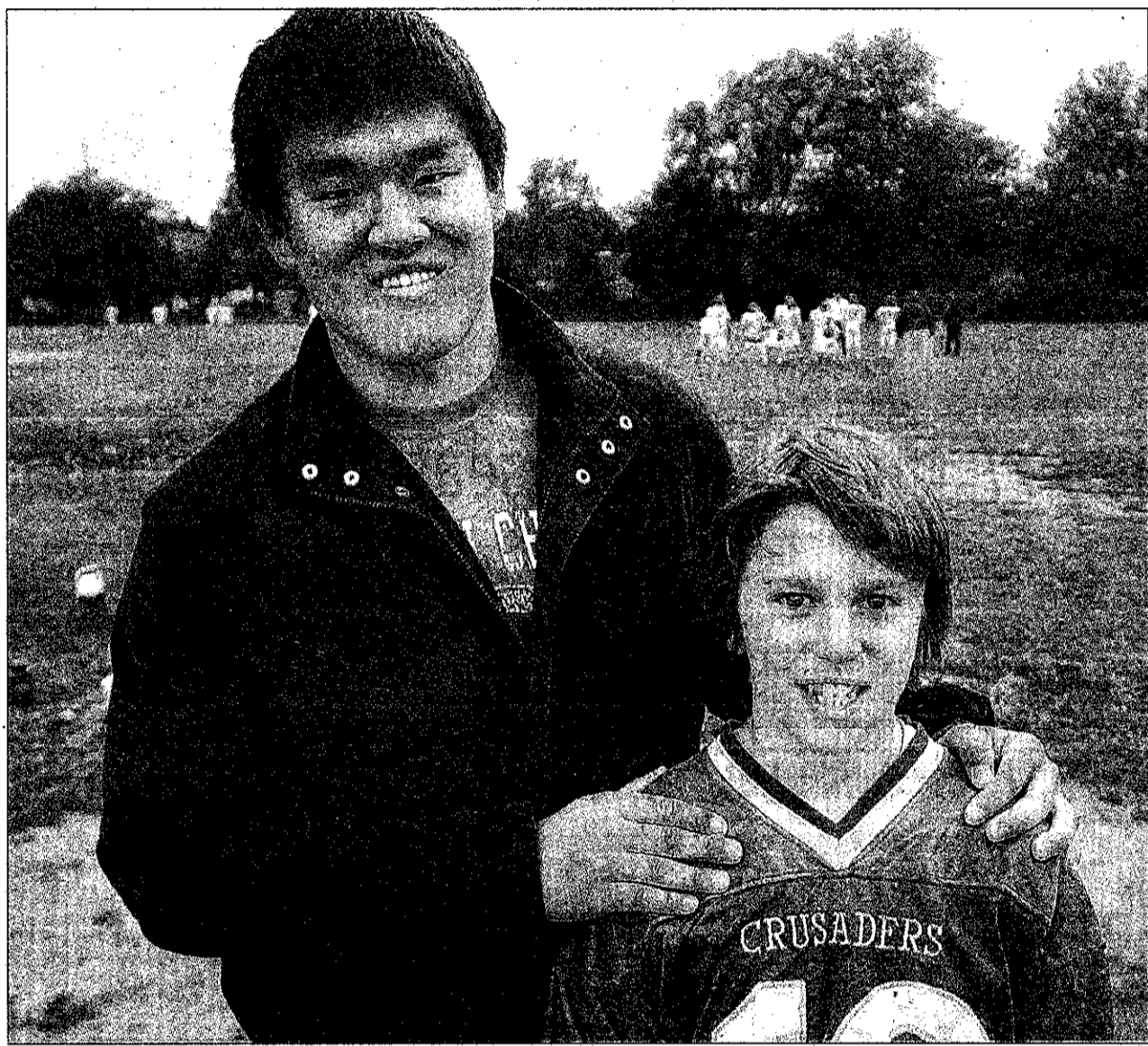
It was 17-all at halftime. Canton got TD runs from Kiere Daniels (4 yards) and Delapaz (1 yard), along with a 33-yard field goal from Dan Stoney with only 16 seconds left.

Churchill countered with a 59-yard pass from Morgan to Ricketts; a 30-yard field from Matt Andrejewski and an 85-yard pass from Morgan to Anthony Frezzell.

Churchill took a 23-17 advantage just 58 seconds into the third quarter on a Morgan-to-Ricketts 57-yard TD toss

But Canton took the lead for keeps on a 36-yard scamper by Delapaz

Please see **CHIEFS, B2**



BILL BRESLER | STAFF PHOTOGRAPHER

Jason Hu (left) and Brocton Baechler thrive on the football field and in the classroom. Hu is a starting defensive end for Canton High School while Baechler is a two-way standout for Our Lady of Good Counsel.

## Hearing-impaired football players inspire others by... TACKLING ADVERSITY HEAD-ON

Not long before dusk Tuesday evening, not far from the Our Lady of Good Counsel sixth grade football team's practice field at West Middle School, Jason Hu

walked up to Brocton Baechler and extended a friendly fist bump.

As the two football players' knuckles met, wide smiles creased their faces before a conversation ensued.

Although they had just met a few weeks ago, they talked like long-time friends — probably about football, maybe not.

The two young men — Jason is

a 17-year-old senior at Canton; Brocton an 11-year-old sixth-grader at All Saints Catholic School in Canton — share an amazing common bond: They both excel in football — a sport that demands regular audio communication — even though they were born with profound (Brocton) and severe (Jason) hearing impairments.

### Meeting all challenges

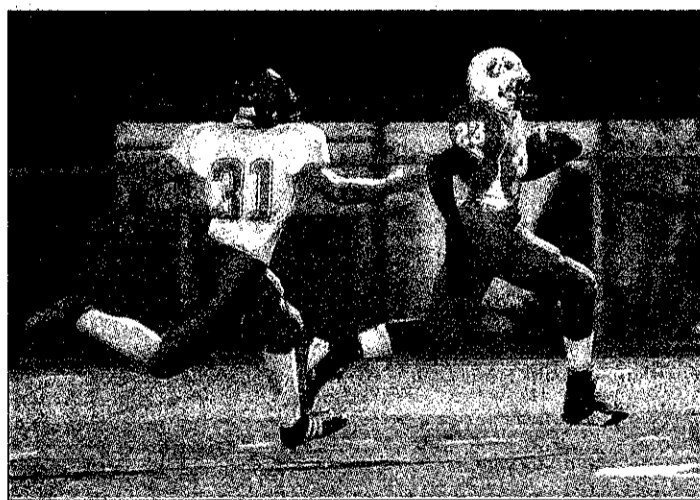
Although they can't hear the quarterback's cadence that begins each play, the referee's whistle that ends each play or the roar of the crowd that celebrates every feat, they're blessed with the focus and perseverance it takes to overcome the daunting adversity their hearing loss throws at them on an all-too-regular

basis.

"Sports are very important to these boys because it's a way for them to gain social acceptance from their peers," said Canton football coach Tim Baechler, Brocton's dad and Jason's coach. "For them, it's like, 'I can't hear, but I can get good grades in school and I can play sports as well as everybody else. Football is a great way for both of them to fit in and build self-confidence.'"

Brocton was born with too few of the sensitive hairs in the inner-ear that trigger the generation of nerve signals sent to the brain. As a result, he has lived most of his life with hearing aids in both ears.

Please see **WRIGHT, B3**



BILL BRESLER | STAFF PHOTOGRAPHER

Canton's Davion Stackhouse outraces Livonia Churchill's Ara Markarian for one of his five second-half touchdowns.



Ed Wright

**DETROIT PISTONS**  
PRESENTED BY **National City**  
**WE WORK AS ONE.**

**OPENING NIGHT**  
vs. INDIANA PACERS  
WEDNESDAY, 10/29 • 8PM

*Tayshaun Prince Halloween Youth Jersey to first 7,500 fans courtesy of Meijer*

**KIDS OPENING NIGHT**  
vs. WASHINGTON WIZARDS  
SATURDAY, 11/1 • 7:30PM

*Rodney Stuckey Home Youth Jersey to first 7,500 fans courtesy of Kerby's Coney Island & Coca-Cola*

*Plus, check out the ticket specials for our youngest Pistons fans*

FOR TICKETS, CALL 248-377-0100 OR VISIT PISTONS.COM











# Rocks rally to upend Northville in 4 games

BY ED WRIGHT  
OBSERVER STAFF WRITER

## PREP VOLLEYBALL

The proverbial shovel that dug Salem's volleyball team out of an early hole Thursday night was covered with the fingerprints of several Rocks.

After dropping the opening game of the match, 25-19, to Kensington Lakes Activities Association Central Division rival Northville, Salem stormed back to win the final three games and the match 25-18, 25-13 and 25-17.

The triumph improved Salem's record to 4-2 in the division, two games ahead of the Mustangs. South Lyon tops the standings with a 6-0 mark.

The list of contributors to the comeback was about as long as the Rocks' roster.

Senior captain Jansan Falcusan was catalyst, racking up 37 set assists, while front-row stalwarts Nicole Merget (12 kills and four blocks) and Jillian Sommerville (14 kills) also stepped up when the going got tough.

"We've been so up and down this season that it was nice to see us play well three games in a row after the first got away from us," said Salem coach Amanda Suder. "A lot of players contrib-

uted tonight — we have sophomores and juniors leading us in a lot of categories — so that's exciting."

Others who joined the big-stat parade were Lauren Dworzanin (six kills and 14 digs), Kelly MacDonald, (six kills and 15 digs) and Kerry MacDonald, who registered a team-high 23 digs.

"Our defense and serving were outstanding tonight," said Suder. "Nicole only had three aces, but she had 12 or 15 serves that created serve-receive problems for them."

"We didn't have a lot of blocks, but we touched a lot of balls, which made it easier for our defense."

Game two was a battle mid-way through with Salem holding a slim 12-11 lead. However, the Rocks seized the momentum with a 7-1 run that was spearheaded by the serving of Merget and a trio of Sommerville kills.

Katie Janda was the catalyst of the game three win as she recorded five straight service points — three of which were aces — along with providing solid defense.

A series of Merget kills — most set up by feathery soft sets from Falcusan — powered the triumphant game four for the Rocks.

## 'Cats defuse Rockets

The Wildcats earned a hard-fought four-game victory over visiting Westland John Glenn Thursday night: 25-22, 25-21, 22-25 and 25-19.

The result left both teams with 3-3 marks in the KLASA South Division. Plymouth is 11-8-3 overall.

"We were looking forward to this match, seeing as we lost to them in five at their place," said Plymouth coach Kelly McCausland. "Whenever we play each other, both teams give it everything they have. It is always an intense match."

"Even though we won, I was more impressed with the fact that our girls earned their pride back. Losing to them in five the last time was tough on us and we knew going into tonight's match that it was going to be a battle. It was more of a well-rounded win for us tonight with everyone contributing."

Meg Quinlan did it all for the winners, recording 13 digs, five kills and four blocks. Other key contributors were Katie Binger

(seven kills and four blocks), Kayla Bridge (eight kills), Dani Risi (nine kills) and Erin O'Connor (12 assists).

A quartet of Wildcats — Risi, O'Connor, Quinlan and Lauren Scott — served at a 100 percent clip.

John Glenn was paced by Brittany Holbrook (15 kills, four blocks) and Stacey Truskowski (32 digs).

## Chiefs sweep Patriots

Canton improved to 19-4 overall and 5-1 in the KLASA South Division — one game behind league-leading Livonia Churchill — with a 25-11, 25-10, 25-13 sweep of Livonia Franklin.

"The team played well tonight — we communicated well on the court and eliminated the defensive and serve-receive errors," said Canton coach Jen Barnes. "We served fairly aggressively, but had a handful of service errors."

Jordan Kieley led the Chiefs with 14 kills. Other standouts included Kristen Muir (six kills), Kacy Moran (25 assists, four aces) and Shelby Anthony, who chalked up nine digs and seven aces.

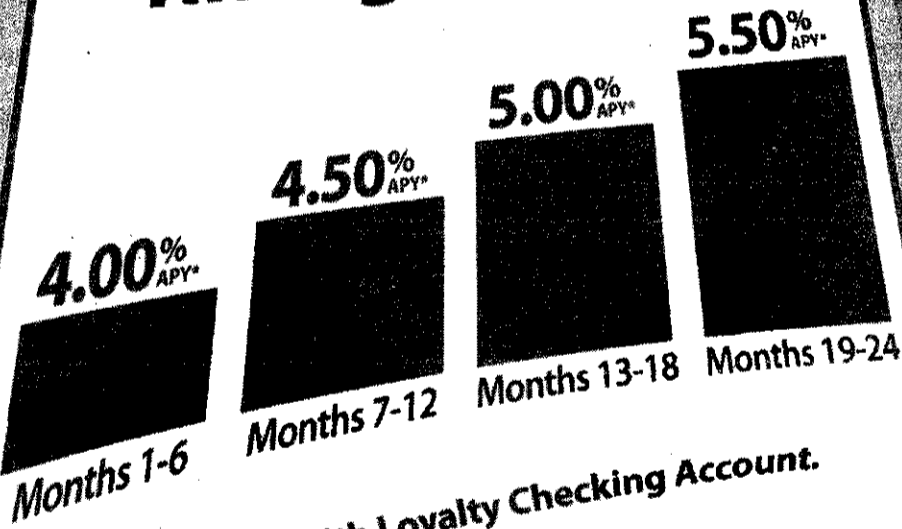
ewright@hometownlife.com | (734) 953-2108

VISIT HOMETOWNLIFE.COM

# SAY HELLO TO GREAT RATES AND SECURITY

Flagstar's innovation continues. This 24-month CD not only offers a great rate that's guaranteed to increase every six months. It also gives you liquidity by letting you make a penalty-free withdrawal every six months.

## 24-Month Rising Rate CD



4.75% APY with Loyalty Checking Account.

# Flagstar

The new way of banking

Individual accounts now FDIC-insured up to \$250,000

flagstar.com

\*Stated Annual Percentage Yield (APY) are accurate as of 10/2/08. Minimum opening balance requirement is \$500 and maximum deposit is \$100,000. Additional deposits are allowed on the 24-month maturity date. Account fees could reduce earnings. Penalty may be imposed for early withdrawal. Withdrawals can be made at the end of each six month interval without penalty. Interest is compounded and credited to your account semi-annually at each six month interval. Not available for public units. Customers must maintain their primary checking account at Flagstar Bank and conduct an average of 15 monthly transactions or at least \$250 in recurring ACH transactions per month to qualify for the Loyalty Checking account rate. "Loyalty Checking account" rate offer cannot be combined with coupons or other special offers. Rate is effective for a limited time only and subject to change without notice. Certain restrictions may apply.

## TENNIS RESULTS

### KLAA-KENSINGTON CONFERENCE BOYS TENNIS TOURNAMENT RESULTS Oct. 4 at Plymouth H.S.

**TEAM STANDINGS:** 1. Novi, 33 points; 2. Northville, 33; 3. Salem, 12; 4. Plymouth, 9; 5. (tie) South Lyon and Canton, 5 each; 7. (tie) Livonia Churchill, Livonia Stevenson and South Lyon East, 7 each; 10. Livonia Franklin, 6; 11. Westland John Glenn, 2; 12. Wayne Memorial, 1.

### INDIVIDUAL FLIGHT FINALS

**No. 1 singles:** Mani Mahadevan (Novi) defeated Tim Wasielewski (N'ville), 7-6 (7-3), 6-2; **semifinals:** Mahadevan def. Brett Foster (Salem), no score available; Wasielewski def. Kevin Renehan (S.L. East), 6-4, 6-1.  
**No. 2:** Ryan Bell (Novi) def. Melvin Joseph (N'ville), 6-3, 6-3; **semifinals:** Bell def. Erik Koch (Stevenson), 6-4, 6-2; Joseph def. Brock Foster (Salem), 6-2, 6-0.  
**No. 3:** Steve Irvine (N'ville) def. Goutham Kondapi (Novi), 6-4, 6-3; **semifinals:** Irvine def. Kyle Gordon (South Lyon), 6-0, 6-2; Kondapi def. Tudor Bahmata (S.L. East), 6-2, 6-0.  
**No. 4:** Carson Crandell (Novi) def. David Benson (Salem), 6-3, 6-0; **semifinals:** Crandell def. Andy Mitchell (Plymouth), 6-1, 6-0; Benson def. Mike Hagan (N'ville), 2-6, 6-3, 6-2.

**No. 1 doubles:** Justin Farooq-Ameya Sohani (Novi) def. Lee Schechter-Nick Kaiweit (N'ville), 6-0, 7-5; **semifinals:** Farooq-Sohani def. Chad Dorton-Steve Trapp (Franklin), 6-1, 6-0; Schechter-Kaiweit def. Max Korpalski-Pat Bailey (Plymouth), 6-0, 6-1.  
**No. 2:** Greg Richard-Peter Zhang (Novi) def. Evan Gatz-Albert Chen (N'ville), 6-1, 6-3; **semifinals:** Richard-Zhang def. Andy Steinman-Jose Peres (Salem), 6-2, 6-0; Gatz-Chen def. David Ding-Adam Payne (Canton), 6-2, 6-3.  
**No. 3:** Derek Richard-Vishnu Venugopal (Novi) def. Mike Burckek-Ian Jaye (N'ville), 6-1, 6-1; **semifinals:** Richard-Venugopal def. Tom Eggleston-John Lopus (Plymouth), 6-0, 6-2; Burckek-Jaye def. Jared Timm-Kyle Wilson (South Lyon), 6-1, 6-1.  
**No. 4:** Nikhil Davarakonda-Nathan Farooq (Novi) def. Matt Satterfield-Andrew Ginnard (N'ville), 6-1, 6-2; **semifinals:** Davarakonda-Farooq def. Drew Leist-Hank Eckhardt (Plymouth), 6-0, 6-0; Satterfield-Ginnard def. John Mosley-Jimmy LaFontaine (Canton), 6-4, 3-6, 7-5.  
**No. 5:** Anthony Rossi-Amol Kamat (N'ville) def. Kyle McGuire-Matt McPherson (Novi), 6-3, 2-6, 7-5; **semifinals:** Rossi-Kamat def. Varun Bandri-Steve Lee (Canton), 6-2, 6-0; McGuire-McPherson def. Pat Moroney-Matt Cezar (Churchill), 6-1, 6-0.

VISIT HOMETOWNLIFE.COM



## CARDINAL Family Haircare

Men • Women • Children

Welcomes Zahava as the newest addition to their staff, specializing in women's cuts and color.

## Hairecuts Anytime!

Senior Citizens & Children under 12 ..... Only \$9  
Adults ..... Only \$13



27308 Five Mile • East of Inkster • Redford  
Hours: Mon. 10-5; Tues.-Fri. 9-8; Sat. 9-4  
(313) 538-3554

OE08623908

## WORTH HAVING A GOOD COPY



Photographic quality.  
Easy to order.  
Affordable.

THE  
**Observer & Eccentric**  
NEWSPAPERS

WHERE HOMETOWN STORIES UNFOLD

Order your reprints of a newspaper page, photo or article at  
[hometownlife.com/oereprints](http://hometownlife.com/oereprints)

QUESTIONS? CALL 866-887-2737

# HOMETOWN LIFE.COM

Hugh Gallagher, editor . (734) 953-2149 . hgallagher@hometownlife.com

## Angela Hospice programs help entire family

Light Up a Life is always a nice event with a sit-down dinner, silent auction and entertainment, but underlying all the fun is the knowledge that proceeds go to Angela Hospice in Livonia. Dozens of volunteers and staff work hard to raise money to pay for the programs to assist terminally ill patients and their families.



Linda Chomin

Kathy Stemberger can't say enough about the help she and her two young sons received before and after her husband died. Jeff Stemberger was diagnosed with esophageal cancer Oct. 7, 2005 and was in the home care program for six weeks prior to his death on Oct. 4, 2006. Angela Hospice staff even came to their home to help Jeff arrange to donate his body to medical research at Wayne State University, where he earned his master's degree.

"They were very well in tune to the dynamics of our family and what our needs were," said Stemberger of Plymouth Township. "They would come and cut his hair, help me bathe him. People say it was pretty amazing what I endured. It's love. I wouldn't have changed a thing. Jeff was a wonderful husband and father."

### LIGHT UP A LIFE

**What:** Gala dinner, silent auction, raffles and entertainment with all proceeds to benefit Angela Hospice  
**When:** 6-11 p.m. Saturday, Oct. 18  
**Where:** Rock Financial Showplace, Novi  
**Tickets:** \$100.  
 Reservations required by Monday, Oct. 13. Call (734) 953-6045 or visit [www.angelahospice.org](http://www.angelahospice.org) and click on events

there. Stemberger still goes weekly to Angela Hospice, her sons once a month.

"My children were my first priority," said Stemberger. "When I was very young I lost two uncles and noticed how these families changed drastically. The pediatric counselor bridged things for my children at school not only to educate staff but open communication. Throughout this journey as our needs changed so did the services. They gave me the tools to move forward."

Rebecca Hyman stresses the bereavement program is not just for families of Angela Hospice patients. One-on-one counseling and support groups are open to everyone in the southeast Michigan area. An adult grief seminar starts Monday, Oct. 13. For details, call (734) 953-6030.

"It's for survivors of suicide loss, for elderly. We can come to their home," said Hyman of West Bloomfield. "If they've lost a spouse, parent, sibling, friend, we have specific groups. Heartstrings we offer once a month for parents who've lost a child. We have a quilters group where they can bring clothing from their loved one and make a quilt and while they're quilting talk about their loved one."

Angela Hospice relies heavily on donations and proceeds from the gala. Last year the bereavement program assisted 1,326 families. That's why Light Up a Life is so important. Angela Hospice provides the services free and is not reimbursed by Medicare or insurance.

Barb Iovan is expecting close to 400 supporters to turn out for the event on Saturday, Oct. 18, at Rock Financial Showplace in Novi. The theme is Diamonds and Denim.

"This is our biggest fund-raiser of the year," said Iovan, events coordinator. "We'll have entertainment at 6 p.m. by David James, a singer in the style of Neil Diamond, and the 7-piece Rick Lieder Band at 8 p.m. Our silent auction includes everything from a baseball signed by 1984 Detroit Tigers champions to a trip to Hilton Head, gift certificates for restaurants, and a chance to be on the morning show with Dick Purtan. Something new this year is a separate auction for art pieces, paintings, oil, watercolor."

Linda Ann Chomin is the health and community life reporter for the Observer & Eccentric Newspapers. She can be reached at (734) 953-2145 or by e-mail at [lchomin@hometownlife.com](mailto:lchomin@hometownlife.com).



PHOTOS BY TOM HOFFMEYER / STAFF PHOTOGRAPHER

String musicians of the Livonia Symphony Orchestra gathered for a rehearsal in preparation for their upcoming season.

# Season of change

## Livonia Symphony opens series with afternoon concert

BY LINDA ANN CHOMIN  
 O & E STAFF WRITER

A buzz of excitement filled the room before the Livonia Symphony Orchestra rehearsal Monday night. 2008-2009 is going to be a season of change. The opening pops concert on Oct. 18 signals a commitment the board of directors and orchestra are making to introduce audiences of all ages to classical music. For the 36th season they're moving the series' concerts to 4 p.m. Saturdays instead of later in the evening to attract families and seniors citizens.

"We want to instill a love of music at an early age," said Rose Kachnowski, the recently elected president of the Livonia Symphony Society, the orchestra's decision making organization. She joined the LSO board of directors 30 years ago when it was known as the Oakway Symphony. "Classical music can be many kinds of music including pops. We want to make it an enjoyable concert to have music from ET. The music for kids' shows are all based on classical music. The Baby

Please see LSO, C3



Conductor Volodymyr Shesliuk leads the Livonia Symphony Orchestra through a recent rehearsal in preparation for their new season.



Violinist Brenda Thalacker, right, gets some direction from Concertmaster Anton Shelepov during a recent rehearsal.

### LIVONIA SYMPHONY ORCHESTRA

**What:** The LSO opens the 2008-2009 season with an afternoon of pops  
**When:** 4 p.m. Saturday, Oct. 18  
**Where:** Clarenceville High School, 20155 Middlebelt, south of Eight Mile, Livonia  
**Tickets:** \$17 adults, \$5 children/students, and available at the door and all Livonia libraries. For information, call (734) 421-1111

# Children's opera leads off meaningful evening

Nancy Florkowski never thought she'd be producing a children's opera but was haunted by Brundibar. The work was originally performed by the inmates of the Terezin Concentration Camp during World War II in the country now known as The Czech Republic. While the opera itself is a fairy tale, it's the setting that kept calling to Florkowski every time she passed the script on the shelf of her Redford home.

The first half of the production is a performance of the opera about two children who triumph over evil with the help of talking animals, but it is followed by scenes and monologues relating to the Holocaust, which left six million Jews dead.

The Motor City Youth Theatre opens the show Friday, Oct. 17, at the Grantland Street Playhouse in Livonia. It is a complete departure from the musicals Florkowski usually produces. In preparation for the performance, several of the older children toured the Holocaust Memorial Center in Farmington Hills.

Brundibar was composed by Hans Krasa and written by Adolf Hoffmeister.

"I wanted our youth theater to do something very meaningful," said



Monica Nelson of Redford (center) is one of two girls playing the part of Brundibar in the children's opera by Motor City Youth Theatre.

Florkowski, youth theater founder and artistic director. "It's a big undertaking with a cast of 33 kids. I doubled and tripled some of the parts. It's only half an hour long. It's hard for kids to be serious because they're so goofy but I think it's going to make a big impact on the audience."

The production has already left an

impression on Amelia Fanelli, a 13-year old student at Dunckel Middle School in Farmington Hills. Fanelli plays an art teacher sent to the concentration camp which was a walled ghetto for Jews from Germany, Austria, Czechoslovakia, Denmark, and The Netherlands. Her 6-year old brother William is in the chorus. Fanelli was able to identify with

### BRUNDIBAR

**What:** The fairy tale children's opera is followed by scenes and monologues relating to the Holocaust  
**When:** 8 p.m. Friday-Saturday, and 2 p.m. Sundays, Oct. 17-26  
**Where:** Grantland Street Playhouse, 27555 Grantland, Livonia  
**Tickets:** \$12-15. Call (313) 535-8962 or send e-mail to [nflfo@aol.com](mailto:nflfo@aol.com)

parts of the production, mainly the fear. It reminded her of the time when she was 8 years old and her grandmother was supposed to pick her up from swim practice, but got the time wrong and left Fanelli alone in the dark.

"I think historically it's of great significance, but I think they're going to get more out the second half," said Fanelli. "A lot of characters in my scene were real people, and were totally forgotten about. My character could only pack 110 pounds and bring it to the camp. She packed almost all art supplies for the children."

lchomin@hometownlife.com | (734) 953-2145

## Arts council to honor citizens for contributions

The Wayne County Council for Arts, History and Humanities will honor 10 outstanding local citizens for their contributions to the cultural environment of greater Wayne County at the annual Recognition Awards program 7 p.m. Wednesday, Oct. 15, in the Atrium of the historic Wayne County Building at 600 Randolph St., Detroit.

The 2008 honors include the County Executive Award: Rick Goward and the Henry Ford Big Band, Dearborn; Arts Educator Award: James Tatum, Detroit, jazz instructor, performer and guiding force behind the James Tatum Foundation providing support to young musicians; Volunteer Award: Dr. Noel Jackson and Debbie Jackson, Trenton, for their work on developing the Downriver Youth Performing Arts Center and restoration of the historic Trenton Theater; Patron Award: Rosalind Meyer, Grosse Ile; Humanities Award: Osvald Rivera, Detroit, for his work with

local community and human service agencies including ACCESS and the Hispanic/Latino community; History Award: Plymouth Historical Museum, for its commitment to honoring the community's past through educational programs, exhibits, workshops and community involvement; County Commissioner's Award: Irene Walt, for her commitment and advocacy for art in public places, the People Mover stations among other public locations; Artist/Performer Award: Michael Mullen, musician founding member of the Baseline Folk Society and graphic artist; and International Award: Sergio DeGiusti, a Redford sculptor, teacher and art historian whose work has been exhibited in the United States and Europe.

Entertainment for the evening will be provided by harpist Catherine Heise, and flutist Dablon Jackson. A dessert reception follows the award ceremony. The event is open to the public at no charge, but guests are asked to RSVP to (248) 374-1930.

## Tea based on American Girls Club series

Twenty lucky girls from ages 8 to 12 will attend the 5th annual "Tea with Felicity" event based on the popular bestselling American Girls Club series at Barnes & Noble bookstore in Northville. Girls and their American Girl dolls will take tea in the best 18th century manner just as character Felicity and her friends would have done.

Barnes & Noble bookseller Paul Cirocco and Karen Hines Dittrick with daughters Catherine, Emma and Caroline, costumed in authentic 18th century attire, host the event at 4 p.m. Saturday, Oct. 25, in the store, 17111 Haggerty at Six Mile.

Before refreshments are served, Cirocco will discuss the history of the traditional afternoon tea as well as give a brief lesson on proper etiquette for young ladies in the 18th century.

Guests will enjoy homemade gingerbread and sugar cookies while tasting freshly brewed hot tea.

Following the tea party, Cirocco and the hostesses will treat the young guests to a special presentation of period toys and games as well as a quill and ink writing lesson with authentic goose feather quill pens.

Space is limited to 20 participants, but observers are welcome. To RSVP, call (248)



Bookseller Paul Cirocco explains the traditional afternoon tea to guests and observers.

348-0696. Bookseller Paul Cirocco began hosting this popular annual event in 2003. Cirocco and Dittrick are members of "The Brigade of the American Revolution" and "British Brigade," international organizations devoted to researching all aspects of life during the Revolutionary War era. The organizations also recre-

ate Revolutionary War scenes at museum programs and historical reenactments throughout the Eastern United States, Canada and abroad.

Cirocco and Dittrick have also participated in both the Bicentennial and 225th anniversary celebrations at sites from Lexington & Concord in Massachusetts to Yorktown in Virginia and everywhere in

between. Cirocco's interest and experience with America's colonial period have made him the resident history expert at the Northville Township bookstore, where he has been employed for just over 10 years.

For more information, contact Betsy Storrs at (248) 348-1274 or crm2648@bn.com.

### Arthritis Today

**JOSEPH J. WEISS, M.D. RHEUMATOLOGY**  
18829 Farmington Road  
Livonia, Michigan 48152  
Phone: (248) 478-7860

#### KNEE CAP PAIN

Knee pain would seem to present a straightforward problem. Both patient and doctor can identify the source of the pain while the redness and irritability of the area to touch would verify that knee pain is indeed the diagnosis. However, physicians circle the knee area with caution. The reason is that the knee includes a number of structures, which, when swollen, can imitate a knee joint problem. These other structures include the anserine bursa, the fibular bursa, the prepatellar bursa, and the infrapatellar bursa. A fall or prolonged work on the hands and knees provides a ready answer as to why one or more of these bursas became inflamed. At other times, mainly the majority of cases, no such explanation is apparent. If a doctor is to avoid an error in diagnosis, he needs to use care in examining a red and painful knee. First, he cannot assume the problem is an inflamed knee joint. Second, he should check each of the bursas surrounding the knee to confirm that one or more of these structures is or is not the source of the patient's pain. Often, the immediate treatment for knee area is injection of a steroid preparation into the involved site. Therefore, a physician must make a correct selection of the source of the pain if treatment is to meet expectations.

[www.drjjweiss.yourmd.com](http://www.drjjweiss.yourmd.com)

*Specializing in Residential & Commercial Restoration & Custom Brick Work*

## Dan's Custom Brickwork

882 York St. • Plymouth, MI 48170

**Chimneys & Porches Repaired and Rebuilt**

**Tuck Pointing & All Other Brick Work**

**Natural & Cultured Stone Installation**

**1.734.416.5425**

**Free Estimates**  
Licensed and Insured

CE08610469

VISIT HOMETOWNLIFE.COM

---

PLYMOUTH CHRISTIAN ACADEMY  
NOTICE OF NON-DISCRIMINATORY  
POLICY AS TO STUDENTS

Plymouth Christian Academy admits students of any race, color, sex, height, weight, or national origin to all the rights, privileges, programs, and activities generally accorded or made available to students at the school.

It does not discriminate on the basis of race, color, national origin, sex, height, or weight, in administration of its educational policies, admission policies, athletic and other school administered programs.

Publish: October 12, 2008 CE08610468\_202

### PUBLIC NOTICE

**Office Of The Wayne County Treasurer**

## Public Auction of Tax Foreclosed Property

**October 20, 21, \*22, and \*23, 2008**

**International Center Building**  
400 Monroe, 8<sup>th</sup> Floor  
Detroit, Michigan 48226  
\*If necessary

**Call (313) 224-5990**

**RAYMOND J. WOJTOWICZ**  
Wayne County Treasurer  
Office Hours:  
Monday - Friday / 8 A.M. - 4:30 P.M.

**ST. MARY MERCY LIVONIA**  
*Saint Joseph Mercy Health System*

*Congratulations to the...*

**Tallal Zeni, MD**  
Michigan Bariatric Institute  
St. Mary Mercy Livonia

The Bariatric Surgery Center of Excellence designation demonstrates that Michigan Bariatric Institute is held to the highest standards of comprehensive services, efficiency, efficacy, and patient safety in the industry.

Learn about minimally invasive bariatric surgery options, such as laparoscopic gastric bypass, adjustable gastric banding, and sleeve gastrectomy at a free monthly educational seminar. Call 1.877.Why Weight? for a seminar near you.

For more information about the Michigan Bariatric Institute, or for a physician referral, visit [www.stmarymercy.org](http://www.stmarymercy.org).

**Michigan Bariatric Institute**  
Just named a Bariatric Surgery Center of Excellence®

REMARKABLE MEDICINE.  
REMARKABLE CARE.

**Jeffrey H. Miller, M.D.**

Dr. Miller has over 13 years experience in treating venous diseases and has received many honors and awards including being named one of

HOUR DETROIT MAGAZINE'S  
**TOP DOCS**

#### Why Advanced Vein Therapies?

- Experienced, board certified vein expert
- Practice is exclusively dedicated to varicose and spider veins
- On-time service in a spa-like atmosphere

*Advanced Vein Therapies offers quick, office-based procedures that are covered by most insurances*

- State-of-the-art treatments
- Virtually pain-free
- Minimal downtime
- No general anesthesia
- No scars
- No Stripping!

**ADVANCED VEIN THERAPIES**

**Metro Detroit's authority in varicose vein care**

**Jeffrey H. Miller, M.D.**  
Board Certified  
46325 W. 12 Mile Rd.  
Suite 335 • Novi  
**248-344-9110**  
[www.AVtherapies.com](http://www.AVtherapies.com)

Please visit us on the web at:  
[www.avtherapies.com](http://www.avtherapies.com)  
or in the at:

CALL NOW FOR A COMPLIMENTARY SPECIAL REPORT

"The truth about Varicose & Spider vein therapies: What every patient must know."

Before After

LSO FROM PAGE C1

Einstein CD's they love the Bach." Kachnowski is equally enthusiastic about the symphony's fund-raiser Friday, Nov. 21, at Laurel Manor in Livonia. The New York Vibes evening features not only the orchestra but the chorus line of Bunny Sanford's School of Dance in Livonia.

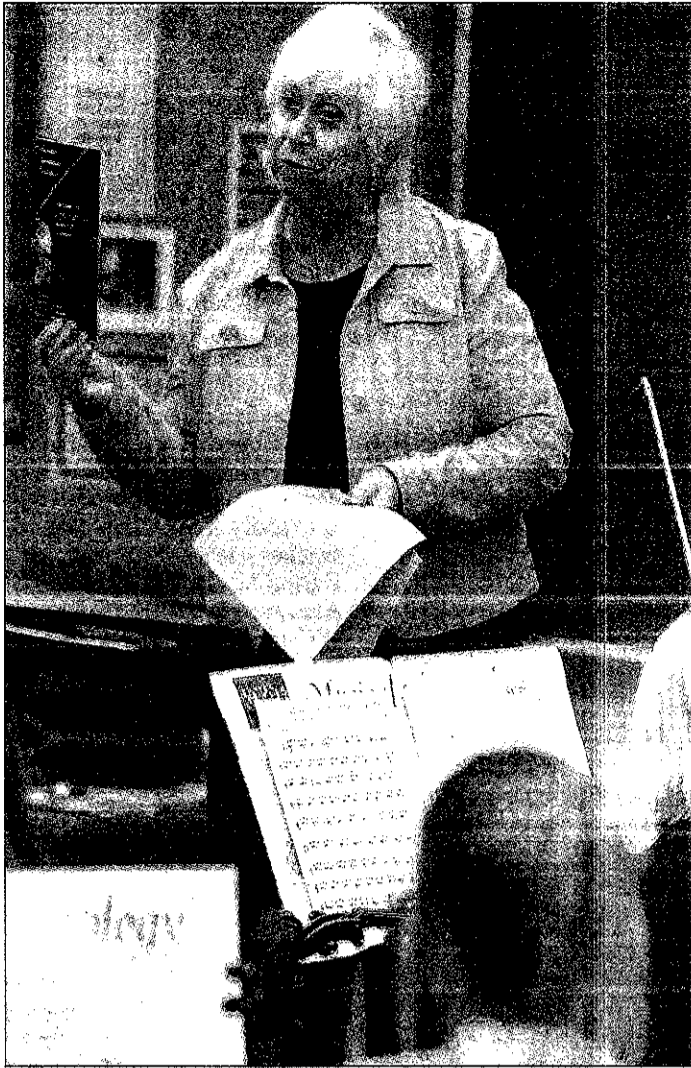
"Our major fund-raiser is always full of color," said Kachnowski. "We're going to invite people to dance at the end of the concert."

Carl Karoub is especially looking forward to the Dec. 6, program with guests that include musicians from the Livonia Youth Philharmonic. Karoub, the LSO's principal French Horn, has taught music privately for decades. The second concert of the series brings the spirit of the holidays alive with the music of Tchaikovsky's "The Nutcracker," Irving Berlin's "White Christmas," and Leroy Anderson's "Sleigh Ride."

"We want to encourage young people to go into classical music," said Karoub, personnel manager and assistant conductor. "That's the future of the orchestra."

The season continues Jan. 24 with a celebration of Viennese classics by Strauss and Haydn; Ballet Masterpieces on March 7, and music from the Romantic period with guest pianist Anna Sorokhtei performing Prokofiev's Piano Concerto No. 1 on April 18.

"We have an excellent program for each concert," said conductor Volodymyr Shesniuk of Garden City. "On the opening program are many American names, John Williams, Richard Rodgers."



TOM HOFFMEYER | STAFF PHOTOGRAPHER

Rose Kachnowski, president of the Livonia Symphony Society, talks to members of the orchestra during a recent rehearsal.

There isn't anything that violinist Marion Gross doesn't like about the new season. This is the Garden City woman's 7th year playing with the LSO. She previously performed with the Plymouth Symphony Orchestra 50 years.

Gross regularly plays at

churches as well including Garden City Methodist and Ward Presbyterian in Northville.

"I like the pops concert with the film music," said Gross. "It's very fun. I like the conductor, his musicality, his warmth."

lchomin@hometownlife.com | (734) 953-2145

Great relationships are built on trust, strength and stability.

SPECIAL MONEY MARKET RATE

2.75% APY

\$15,000 minimum deposit. Comerica Platinum Circle® or Premier checking account required.

SPECIAL CD RATE

4.00% APY

12-month term. \$2,500 minimum deposit. Comerica checking account required.

Comerica relationship with special limited-time offers.

800.292.1300

Comerica Bank

comerica.com/relationships

LEARN MORE ABOUT ADOPTION. There are an estimated 142 million orphaned children worldwide. Give hope to one of these children by considering adoption. UPCOMING ADOPTION INFORMATION MEETINGS IN FARMINGTON HILLS. Domestic Infant, China, Colombia, Ethiopia, Haiti, India, Kazakhstan, Nepal, Russia, and Ukraine. October 14, 7pm; November 18, 7pm; December 9, 7pm. AdoptionMonth.org

Comerica Bank Special Money Market Rate and Special CD Rate. 2.75% APY and 4.00% APY. \$15,000 minimum deposit. Comerica Platinum Circle® or Premier checking account required.

Why do I use Restylane? To look years younger, even in fluorescent lighting. Now you can save up to \$100 on Restylane® the number one selling dermal filler in the world. Restylane® smooths away moderate to severe facial wrinkles and folds, such as the lines from your nose to the corners of your mouth (nasolabial folds). Ask your doctor about Restylane®. For more information on this offer, visit www.RestylaneUSA.com/offer.

Important Safety Considerations of Restylane®. Restylane® restores volume and fullness to the skin to correct moderate to severe facial wrinkles and folds, such as the lines from your nose to the corners of your mouth (nasolabial folds). After your treatment, you might have some swelling, redness, pain, bruising, and tenderness. This will normally last less than seven days. Although rare, red or swollen small bumps may occur. If you have had facial cold sores before, an injection can cause another outbreak. In rare circumstances, the doctor may inject into a blood vessel, which can damage the skin. To avoid bruising and bleeding, you should not use Restylane if you have recently used drugs that thin your blood or prevent clotting. If you are pregnant, breastfeeding, or under 18, you should not use Restylane.

Save up to \$100 on your Restylane® or Perlane® treatment! Restylane® Rebate Redemption Form. For a limited time only, you can receive a \$50 rebate on one 1 mL syringe or a \$100 rebate on two 1 mL syringes of Restylane® or Perlane®. Offer expires October 31, 2008. Certain restrictions apply. See Offer Terms and Conditions for details. How to receive your rebate. Simply complete this form with your information. Then mail it, along with the Restylane® or Perlane® box tops (limit 2) and purchase receipt, to: Restylane® Rebate, P.O. Box 6422, West Caldwell, NJ 07007-6422.

Restylane, Redefining Beauty, and Why do I use Restylane? are trademarks of HA North American Sales AB. © 2008 Medicis Aesthetics Inc. RES 08-0544 08/20/08

ENGAGEMENTS

Ridgway-Oatley

James Ridgway of Grosse Pointe Park and Karen Ridgway of Grosse Pointe announce the engagement of their daughter, Sylvia Louise Ridgway, to Alexander John Oatley of Detroit.



social work from Wayne State University. He is currently working in his field as a social worker. The couple is planning an October wedding at Newburg United Methodist Church in Livonia.

Alexander-LeSage

Bob and Debbie Alexander of Waterford announce the engagement of their daughter, Amy Alexander, to Brent LeSage of Royal Oak.



BIRTH

Niemiec

Kevin and Angela (Jacovetti) Niemiec announce the birth of their son Drew Benjamin Niemiec.



Jacovetti, Lottie Marie Niemiec of Farwell and Donald Dwyer of Clearwater, Fla.

ANNIVERSARY

Schmidt

Robert and Marianne (Michaels) Schmidt of Plymouth are celebrating their 50th wedding anniversary this month.



Zachary Schmidt. Friends and family are celebrating the occasion with a luncheon at Ernesto's Restaurant in Plymouth.

WEDDING

Frizzell-Lasser

Curtis and Sharlene Frizzell of Garden City announce the marriage of their daughter, Laurel Frizzell, to Adam Lasser of Garden City.



Ashlyn Jones and flower girl Ella Gabriel. The groom was attended by best man Adam Walentowicz and groomsmen Sabelo Mncwango, Corey Brodi, Dan Finley, Rob Kania, Ken Nelson, and junior groomsmen Zachary Frizzell. The couple spent their honeymoon in Walt Disney World and took a 7-day cruise to the Eastern Caribbean. They have made their home in Westland.

Arts council in need of items for sale

The Plymouth Community Arts Council is holding a Rummage Sale 10 a.m.-4 p.m. Saturday, Oct. 18, at the Joanne Winkelman Hulce Center for the Arts, 774 North Sheldon.

items will be donated to the AM Rotary Literacy Project and other local organizations. Volunteers are needed to sort on Friday and work the Rummage Sale on Saturday.

Passages

Obituaries, Memorials, Remembrances

1-800-579-7355 ♦ fax: 734-953-2232

e-mail: oeobits@hometownlife.com

View Obits On-line@www.hometownlife.com

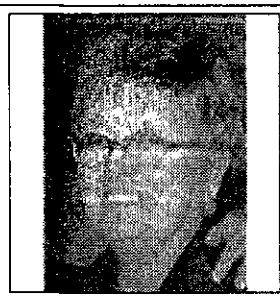


ALBERT "JOE" ALLEN

Age 85, of Canton and formerly of Dearborn. Passed away October 9, 2008. He was a resident Dearborn for over 50 years.

RAYMOND A. GALLANT

Age 87, of Silver Lake Road and Bradenton, Florida. Passed away Wednesday, October 08, 2008 at CVPH Medical Center in Plattsburgh.



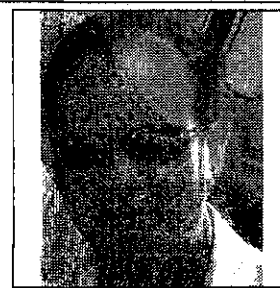
EILEEN MARY McGRATH

Age 62, of Ocala, Florida. Died on Tuesday, October 7, 2008 at Legacy House Hospice.



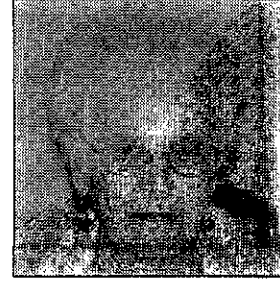
PAUL DONALD NORA

September 15, 1958. Died September 11, 2008. Of Kalkaska MI, since 2006. Previous residences: Detroit, MI; Harlan, IN; Big Rapids, MI; Minneapolis, MN.



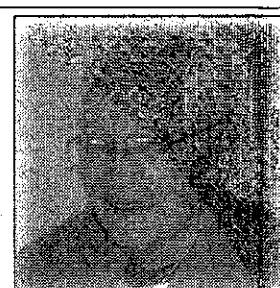
DANIEL "DAN" MYERS

Of Redford, Michigan. Passed away October 5, 2008 due to a tragic accident. Dan is survived by his parents, Fred "Bud" Myers of Lansing, Michigan and Carolann Myers of Redford, Michigan;



CECILE M. WILSON

Age 95, of Cleves, Ohio. Formerly of Plymouth, Ohio. Died October 7, 2008. Beloved wife of the late Woodrow Wilson.



CHRISTOPHER WILSON

Age 94, of Livonia. Died Sept. 17, 2008 in Charlevoix. Father of Robert (Vonnice) Wilson, Caroline (Don) Luttrull, Chris (Teresa) Wilson, Mary Lou O'Connell, Patti (Bob) Fitzgerald & Eric Wilson.

In Loving Memory RAYMOND RICHARD PANKAU

If you think we could forget you I don't believe we will We see daily ongoing traces See evidence of you still Beautiful music and sweet laughter The foods you liked to cook Lots of garage sales and knickknacks About your preferences We could write a book You taught us how to save a dime Not to waste, you didn't like that You made the most out of nothing Could make a meal at the drop of a hat

As Grandma always said... God love you! ...Oh yeah Dad. We do too! Your Kids



ANNA M. ROMAN

Age 107. Of West Bloomfield, MI. October 8, 2008. Arrangements by THAYER-ROCK FUNERAL HOME, downtown Farmington (one blk. W. of Farmington Rd.).

Let others know... When you've lost a loved one, place your notice on our website and in "Passages"...a directory located in every edition of your hometown newspaper.

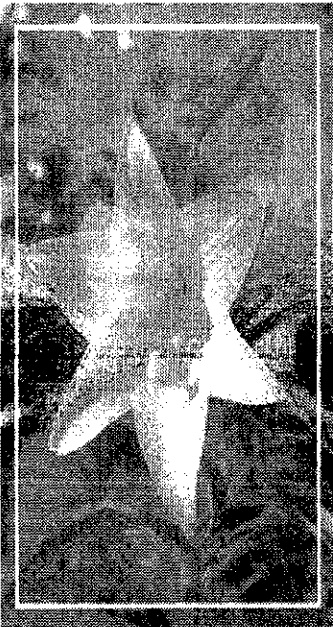
Observer & Eccentric Call 1-800-579-7355

JOSEPH M. BROWN, SR.

Age 91. Of Farmington Hills, MI. October 9, 2008. Arrangements by THAYER-ROCK FUNERAL HOME, downtown Farmington (one blk. W. of Farmington Rd.).

MITCHELL KENNETH BUTLER

Age 14, of Redford, Michigan. Died on Sunday, October 5, 2008, after being struck by a car when biking to officiate a youth soccer game.



MARILYN L. KOSHOREK

Age 77, of Royal Oak. Died October 8, 2008 at her home. She was born July 7, 1931 in Jamestown, N.Y. and was the widow of Clement J. Koshorek, a former professional baseball player and native of Royal Oak.

EDITH B. ENDLE

Age 93. Formerly of Sandusky, Ohio. Passed away on October 7, 2008. She is survived by daughters Mary Lu (Peter) Stone, of Plymouth and Barbara (James) Himes, of Hacienda Heights, CA;

OBITUARY POLICY The first five "billed" lines of an obituary are published at no cost. All additional lines will be charged at \$4 per line. You may place a picture of your loved one for an additional cost of only \$6. Symbolic emblems may be included at no cost (example: American Flags, religious symbols, etc.) Deadlines: Friday 4:15 PM for Sunday, Wednesday 9:45 AM for Thursday. Obituaries received after these deadlines will be placed in the next available issue. e-mail your obit to oeobits@hometownlife.com or fax to Jennifer Muszatk 586-826-7318 Attn: Obits c/o Jennifer Muszatk 586-826-7115 or Charlotte Wilson 586-826-7082 For more information call: Jennifer Muszatk 586-826-7115 or Charlotte Wilson 586-826-7082 or toll free 800-579-7355 ask for Jennifer or Charlotte

# Appliance Doc shares response to smelly dishwasher problem

There is nothing nicer for a columnist than to get a response to the columns he or she writes. Thank you Betsy, Christa, Rob, Dianne, Kevin, Dan, Catherine, Betsy and Pam. The article on our Bosch dishwasher two Sundays ago created a string of responses and I just want to thank every one of you for writing and calling me. Following is some of the feedback.

**Kevin wrote:** Interesting article and I was surprised to hear that odor complaints have the perception of being commonplace with Bosch dishwashers. I will talk to my friends at Bosch

and see what recommendations they may have regarding a resolution.  
**Reply:** As you can see, ladies and gentlemen, we might just be getting some help from one of our readers. I'll be sure to pass on whatever Kevin finds out.  
**Betsy wrote:** We too, have one of the smelly Bosch dishwashers. It seems like such a waste of water to run it just to get rid of the odor. Our solution has been to make sure you LEAVE IT OPEN after running a load, until it is quite dry (say overnight, or while you're at work). While it is rather inconvenient (especially since we have to close the dishwasher door to get to the trash under the sink!) it really helps tremendously, and is worth it. And certainly don't go on vacation and leave it closed unless it is absolutely positively bone dry! When I originally called the

Bosch customer service line regarding the problem, someone told me that I should be running a dishwasher cleaner through it, implying that I was an idiot for not doing this on a regular basis. Nowhere in the manual is this recommended, and my previous old clunky dishwasher never required such treatment (though of course we did use your Tang treatment on occasion). I gave up on the cleaners when I realized it only gave me a few more days of odor-free operation.  
 The root of the problem may be in its particular mode of operation. You may have noticed that the dishes do not dry unless you open it after it cycles? This is apparently intentional, designed to save energy, and to be easier on your dishes (by not "baking" them with a heating element to dry them) the side effect is that the dishwasher itself takes longer

to dry than the dishes. Bosch is quite remiss in not explaining this to its new and prospective owners; this whole "living green" idea takes some adjustments in the procedures people are used to.  
**Reply:** WOW Betsy, you did a much better job at explaining the problem than I did and I thank you.  
**Christa wrote:** Your article entitled, "Odor in new Bosch dishwashers" sounds absolutely scary. We have had our Bosch stainless steel tub dishwasher for about two years and have had no problems with it at all. My husband and I are highly allergic, so our noses would discover the odor very quickly. We try not to keep dirty dishes in there longer than two days. If people don't have decaying food pieces in there that cause the odor, do you think that perhaps acids on the

stainless surface could cause such an odor?  
 Things like vinegar, orange or tomato juices running down from the dishes onto the bottom surface? I know when I clean my stainless sink, some chemicals cause an odor.  
**Reply:** My dear Christa, I am going to find out. I'm taking a ripe tomato from my first-time garden and squashing it on my

darling Valorie's new stainless steel sink. If you no longer see my column in this paper, it's because somehow my hands are broke. Stay tuned.  
**Joe Gagnon** can be heard at 8 a.m. Saturdays on WAAM 1600. His phone number is (734) 971-1600 Ext. 28. Do you have a question about an appliance or have a problem with one? E-mail it to Joe Gagnon at [applidr@twml.rr.com](mailto:applidr@twml.rr.com).

**GREAT LAKES DERMATOLOGY**  
**MICHAEL R. COHEN, D.O.**  
 Board Certified Dermatologist  
 Specializing in Diseases of the Skin, Hair & Nails  
 Invites you to visit and receive the care you deserve.  
 • Skin Cancer • Eczema  
 • Moles • Warts  
 • Psoriasis • Hair Loss  
 • Acne • Botox • Much More  
 Accepting New Patients • All Ages  
 Call for Appointment 248-324-2222 Evening appts. available  
 Lewis Medical Office Centre, 39475 Lewis Drive,  
 Suite 150, Novi, Michigan 48377  
[greatlakesderm@yahoo.com](mailto:greatlakesderm@yahoo.com)

**The Perfect Present**  
 Inspirational, Christian, Wedding, Anniversary, Baby, Children, Teens, Retirement, Red Hat Society and more  
 32614 Seven Mile Road  
 Livonia • E. of Farmington Rd.  
 (Near Jet's Pizza)  
 248-473-6111 (4438)  
[www.perfectpresentllc.com](http://www.perfectpresentllc.com)  
 Store Hours: Mon-Fri. 10-7; Sat. 10-5  
**Breast Cancer Items 25% off**  
 In honor of Breast Cancer Awareness Month  
**Storewide Fall Sale**  
 Pick your discount 15%-50% off your purchase  
 (excludes current sale, consignment and kameleon items)  
 Lay-Away Service Available

**COME ON IN... IF YOU DARE!**  
**ADULT PARTY**  
 Saturday, October 25th • 5pm-Midnight  
 • Tarot Card Reader • Prize for Best Costume  
 • Bob for Apples... Win a Free Drink!  
 • Haunted Hayrides 8pm to 10pm on the hour  
 • Buffet with Assorted Foods including Pizza, Appetizers, Desserts and more!  
 \$9.95 per person \$13.00 per person with appetizers  
**KID'S HALLOWEEN BRUNCH**  
 Sunday, October 26th • 1pm-3pm  
 • Pumpkin Decorating • Bob for Apples  
 • Prize for Best Costume  
 • Haunted Hayrides 1:15pm to 2pm and 2:45  
 \$8.95 per child \$9.95 per person with appetizers  
 Buy 1 Entree, Get 1 Entree of equal or lesser value... **FREE!**  
 Free food value limited to \$10  
 One coupon per table • Expires 12-31-08  
**GEORGE MURPHY'S**  
 36000 Seven Mile • Livonia  
[www.georgemurphys.com](http://www.georgemurphys.com)  
 Call for reservations... 248-473-1300

**FOUR FRIENDS BAR/GRILL**  
 The Taste of Canton  
 734-416-0880  
 44282 Warren (E. of Sheldon) in Canton  
 OPEN 7 DAYS  
**Sweetest Day • Saturday, Oct. 18th**  
**Dinner Specials**  
 Dinner for 2 only \$19.95  
 7 Entrees to Choose From!  
 Music with the DOUBLE-CROSS BAND 9:30 pm-1:30 am  
**HALLOWEEN COSTUME PARTY**  
 Saturday, Oct. 25th  
 Contest at Midnight  
 1st, 2nd, 3rd Prizes  
 Live Band 9:30 pm - 1:30 am  
**Lunches Under \$6**  
 LUNCH Mon-Fri 11-3 DINNER Starts at 4 pm  
 SUNDAY 11-3pm Brunch  
 - Football Specials -

**\$5.00**  
**FLU SHOTS**  
 Keith J. Pierce, MD  
 Internal Medicine  
 38525 Eight Mile Road  
 Livonia, MI 48152  
 734.542.5512  
 Call for Directions!  
**WALK-IN NOW!**  
 Weightloss Program Available

**CREDIT UNION WEEK**  
**DID YOU KNOW?**  
 (MS) — Unlike a more traditional financial institution such as a bank or a savings and loan, a credit union is actually owned by its members. A volunteer board of directors is elected from within the credit union's membership. Since credit unions are owned by the members themselves, many credit unions claim to be more member-friendly. Whereas banks do not necessary require borrowers to be account holders, credit unions only lend money to members.

**Fuel your dreams with up to \$225\* in FREE Gas!**  
 Now through October 31st, you can receive up to \$225\* in Free Gas when you open a new checking account with select products and services!  
**CO-OP SERVICES**  
 Banking... the Credit Union Way!  
 www.cscu.org • 800-321-8570  
 Dearborn • Livonia • Roseville • Southgate  
 Westland • Westland

**It's All About YOU at BBCU!**  
 Birmingham Bloomfield Credit Union is your friendly neighborhood financial institution. Offering a complete line of financial products and services, we're here to serve the most important family of all. Yours.  
**Birmingham Bloomfield Credit Union**  
 Birmingham 576 E. Lincoln (248) 647-5958  
 Keego Harbor 2038 Cass Lake Rd. (248) 683-2920  
 PLUS 17 Conveniently-Located Service Centers  
[www.bbcu.org](http://www.bbcu.org)  
 SERVING ALL OF OAKLAND COUNTY

**Safe. Solid. Since 1942.**  
 Michigan Educational Credit Union has specialized in serving the unique financial needs of school employees and their families since 1942. Find out what we can do for you today!  
 Great Rates! Fewer Fees!  
 Five-Star BauerFinancial Rating!  
 Federally Insured!  
**NCUA** **LENDER**  
 Michigan Educational Credit Union membership is open to employees of schools located in Wayne, Washtenaw, Oakland, Macomb, Livingston and Jackson counties, and their families.  
**Michigan Educational Credit Union**  
[www.michedcu.org](http://www.michedcu.org)  
 Plymouth 734-455-9200  
 Livonia 734-261-1050  
 Ann Arbor 734-761-7505  
 Brighton 810-494-6000  
 Royal Oak 248-399-7473  
 Macomb 586-566-5599











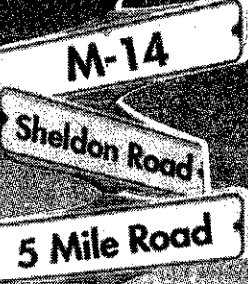


# GMC BOB JEANNOTTE

## TRUCK MONTH



**ATTENTION**  
CHRYSLER-JEEP-DODGE LESSEE  
PRIVATE OFFER PROGRAM GM  
WILL PAY UP TO \$1000 TOWARD  
REMAINING LEASE  
PAYMENTS



### Check Out The Great Lease-to-Lease and Lease-to-Buy Deals!

#### 2009 PONTIAC VIBE

Order #NCCP1S



Was \$20,350 **-OR- LEASE FOR**

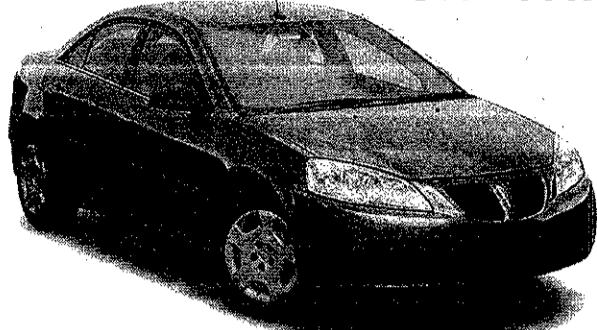
NOW

**\$17,198\***

**\$202\*\*** PER MO.  
\$0 Down Payment

#### 2009 PONTIAC G6

Stk. #90023



Was \$22,810 **-OR- LEASE FOR**

NOW

**\$16,304\***

**\$222\*\*** PER MO.  
\$0 Down Payment

#### 2008 PONTIAC TORRENT

Stk. #6395



Was \$24,130 **-OR- LEASE FOR**

NOW

**\$16,995\***

**\$229\*\*** PER MO.  
\$0 Down Payment

#### 2008 PONTIAC G8

Stk. #6630



Was \$27,595 **-OR- LEASE FOR**

NOW

**\$19,995\***

**\$289\*\*** PER MO.  
\$0 Down Payment

#### 2008 PONTIAC SOLSTICE CONVERTIBLE

Loaded! Stk. #6429



Was \$28,915 **-OR- LEASE FOR**

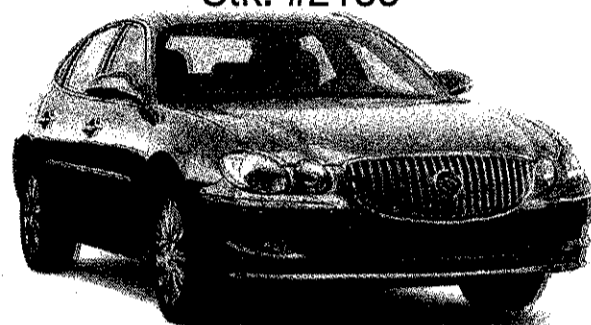
NOW

**\$21,995\***

**\$279\*\*** PER MO.  
\$0 Down Payment

#### 2008 BUICK LACROSSE CXL

Stk. #2186



Was \$28,255 **-OR- LEASE FOR**

NOW

**\$19,995\***

**\$289\*\*** PER MO.  
\$0 Down Payment

**0% Financing available 72 months on select models**

#### 2008 BUICK LUCERNE CX

Stk. #2029



Was \$26,995 **-OR- LEASE FOR**

NOW

**\$18,495\***

**\$256\*\*** PER MO.  
\$0 Down Payment

#### 2008 BUICK ENCLAVE CXL FWD

Stk. #2188



Was \$39,680 **-OR- LEASE FOR**

NOW

**\$29,995\***

**\$379\*\*** PER MO.  
\$0 Down Payment

#### 2008 GMC ENVOY

Stk. #95013



Was \$30,965 **-OR- LEASE FOR**

NOW

**\$19,699\***

**\$299\*\*** PER MO.  
\$0 Down Payment

#### 2009 GMC ACADIA

Stk. #95005



Was \$32,675 **-OR- LEASE FOR**

NOW

**\$22,703\***

**\$364\*\*** PER MO.  
\$0 Down Payment

#### 2008 GMC YUKON

Stk. #4234



Was \$42,645 **-OR- LEASE FOR**

NOW

**\$28,995\***

**\$429\*\*** PER MO.  
\$0 Down Payment

#### 2008 SIERRA EXT.

Stk. #4019



Was \$33,165 **-OR- LEASE FOR**

NOW

**\$21,995\***

**\$289\*\*** PER MO.  
\$0 Down Payment

## BOB JEANNOTTE

14949 SHELDON ROAD • PLYMOUTH

(Between M-14 & 5 Mile Road)



Save a Lot with Bob Jeannotte

Mon. & Thurs. 9 to 9, Tues., Wed. & Fri. 9 to 6

734-453-2500

WWW.JEANNOTTE.COM

Must have any competitor lease ending before 1/31/09 or any GMAC lease ending before 6/30/09. \*\*Lease payments based on financial institutions approval of best tier. 50 months/12,000 mile per year. Plus first payment, tax, title, doc., and plates due. See dealer for details. Employee pricing for everyone. Must take delivery by 10-31-08. See dealer for details.

# NORTH BROTHERS

## \$1500 COMPETITIVE LEASE ALLOWANCE

**ALSO VISIT**  
**NORTH BROTHERS**  
**LINCOLN/MERCURY**  
**LOCATED IN THE**  
**TROY MOTOR MALL.**  
**(800) 586-4196**

**\$300 Gas Card with any vehicle purchase\*\*\*\*\***

# NEW 2009 FORD FLEX

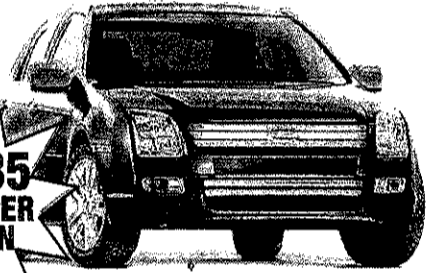


**NEW**  
**2009 FORD FLEX SE**  
**BUY FOR - \$21,861\*\*\*\***  
**YOU SAVE - \$8,029**  
**OR LEASE FOR \$295\*\*\* per mo.**

**NEW**  
**2009 FORD FLEX SEL**  
**BUY FOR - \$24,801\*\*\*\***  
**YOU SAVE - \$8,864**  
**OR LEASE FOR \$306\*\*\* per mo.**

**NEW**  
**2009 FORD FLEX LIMITED**  
**BUY FOR - \$27,090\*\*\*\***  
**YOU SAVE - \$9,235!**  
**OR LEASE FOR \$342\*\*\* per mo.**

### 2009 FORD FUSION SE FWD



**\$214\*** per mo.  
 \$2,150 Due At Signing

UP TO 35 MILES PER GALLON

### NEW 2008 FORD EDGE SE FWD



**\$219\*** per mo.  
 \$2,126 Due At Signing

UP TO 24 MILES PER GALLON

### 2009 FORD ESCAPE XLT FWD



**\$227\*** per mo.  
 \$2,285 Due At Signing

UP TO 26 MILES PER GALLON

### 2008 FORD F-150 XLT SUPERCAB 4X4



**\$355\*** per mo.  
**SALE PRICE \$20,433\*\*\***

UP TO 20 MILES PER GALLON

## HUGE SELECTION OF QUALIFIED PRE-OWNED VEHICLES

Certified Pre-Owned Dealer

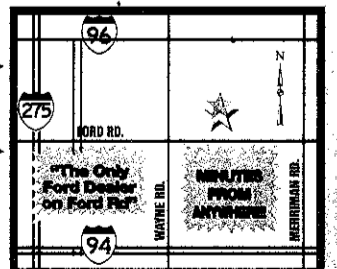
<b>1998 LINCOLN CONT.</b> P20661 Cheap Luxury! <b>\$4,450</b>	<b>2001 FORD WINDSTAR</b> P20581 Budget Priced <b>\$4,995</b>	<b>WHY NORTH BROTHERS?</b> NORTH BROTHERS <input checked="" type="checkbox"/> 115 Point Inspection <input checked="" type="checkbox"/> 3 Month/4,000 Mile Limited Warranty <input checked="" type="checkbox"/> Extended Warranties Available <input checked="" type="checkbox"/> Roadside Assistance <input checked="" type="checkbox"/> Full Tank of Fuel <input checked="" type="checkbox"/> New Floor Mats <input checked="" type="checkbox"/> Oil & Filter Change		<b>1999 DODGE RAM SCAB</b> P20559A 2WD <b>\$8,950</b>	<b>2005 TAURUS SE</b> P20636 Certified, Nice <b>\$11,500</b>
<b>2002 FORD EXPEDITION</b> P20655 Room for everyone <b>\$9,450</b>	<b>2006 PT CRUISER</b> P20620 Full Power <b>\$10,100</b>	CERTIFIED USED VEHICLES <input checked="" type="checkbox"/> 115 Point Inspection <input checked="" type="checkbox"/> 6 Year/100,000 Mile Limited Warranty <input checked="" type="checkbox"/> Roadside Assistance <input checked="" type="checkbox"/> New Wiper Blades <input checked="" type="checkbox"/> Full Tank of Fuel <input checked="" type="checkbox"/> QualityChecked <input checked="" type="checkbox"/> Oil & Filter Change <input checked="" type="checkbox"/> Preferred Interest Rates		<b>2004 SEBRING CONV</b> 8T1473A Winter Priced <b>\$10,500</b>	<b>2007 FOCUS SE</b> 3 To Choose From <b>\$11,500</b>
<b>2006 PONTIAC VIBE</b> P20557A Full Power <b>\$11,250</b>	<b>2007 PONTIAC G6</b> P20589 Leather, Captains <b>\$11,300</b>	<b>2004 EXPLORER 4X4</b> P20561 XLT, Loaded <b>\$11,950</b>	<b>2003 CHEV SUBURBAN</b> 9T8009A 4X4, Leather, DVD <b>\$12,100</b>	<b>2007 MAZDA 5</b> P20662 Full Power, Like New <b>\$13,700</b>	<b>2007 MUSTANG</b> P20481 V6, Loaded <b>\$13,940</b>
<b>2007 FREESYLE SEL</b> P20657 6 Year 100K Warranty <b>\$16,250</b>	<b>2007 ESCAPE XLT</b> P2062 Certified <b>\$16,500</b>	<b>2008 EXPLORER 4X4</b> P20630 Third seat, Certified <b>\$17,950</b>	<b>2005 CADILLAC CTS</b> 8T3079A Leather, Sunroof <b>\$17,950</b>	<b>2007 TAURUS SEL</b> Certified 6yr/100,000 Warranty, APR as low as 2.9%, <b>\$10,950</b> <b>4 TO CHOOSE FROM</b>	

# NORTH BROTHERS

**1-800-584-2725**

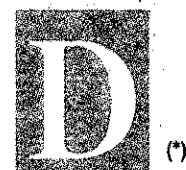
**33300 FORD ROAD • WESTLAND • www.northbros.com**

Mon. & Thurs. Tues., Wed., Fri.  
 9-9 9-6  
**OPEN SATURDAY**  
 9-3



\*Payments based on 36 month/10,500 low mileage Red Carpet Lease. Cash due at signing includes first month's payment, acquisition fee, waived security deposit; excludes title, taxes, and license fees. Ford credit financing required. Must take delivery from dealer stock by 10/31/08. See dealer for details. \*\*2500 Down with approved credit for 72 mo w/FMCC A/Z Plan. Must qualify for retail owner loyalty. \*\*\*Payments based on 36 month/10,500 low mileage Red Carpet Lease. Cash due at signing includes first month's payment, acquisition fee, waived security deposit; excludes title, taxes, and license fees. Ford credit financing required. Must qualify for owner loyalty. \*\*\*\*A/Z Plan Price does not include destination, doc fee, tax, title and plate fees. All price sales excluded. \*\*\*\*\*\$300 Gas Card for Non-Plan Sales only, \$50 Gas Card available for Plan Sales. MPG estimate based on 2009 Flex SE, 2009 Fusion 2.3L I4, 2008 Edge 3.5L V6, 2008 F-150 5.4L V8, 2008 Taurus. Residency restrictions apply. All payments are for A/Z plan customers and eligible family members. Payments may vary; dealer determines prices. Not all lessees will qualify. Expires 10/31/08. OE0626220

# New Homes

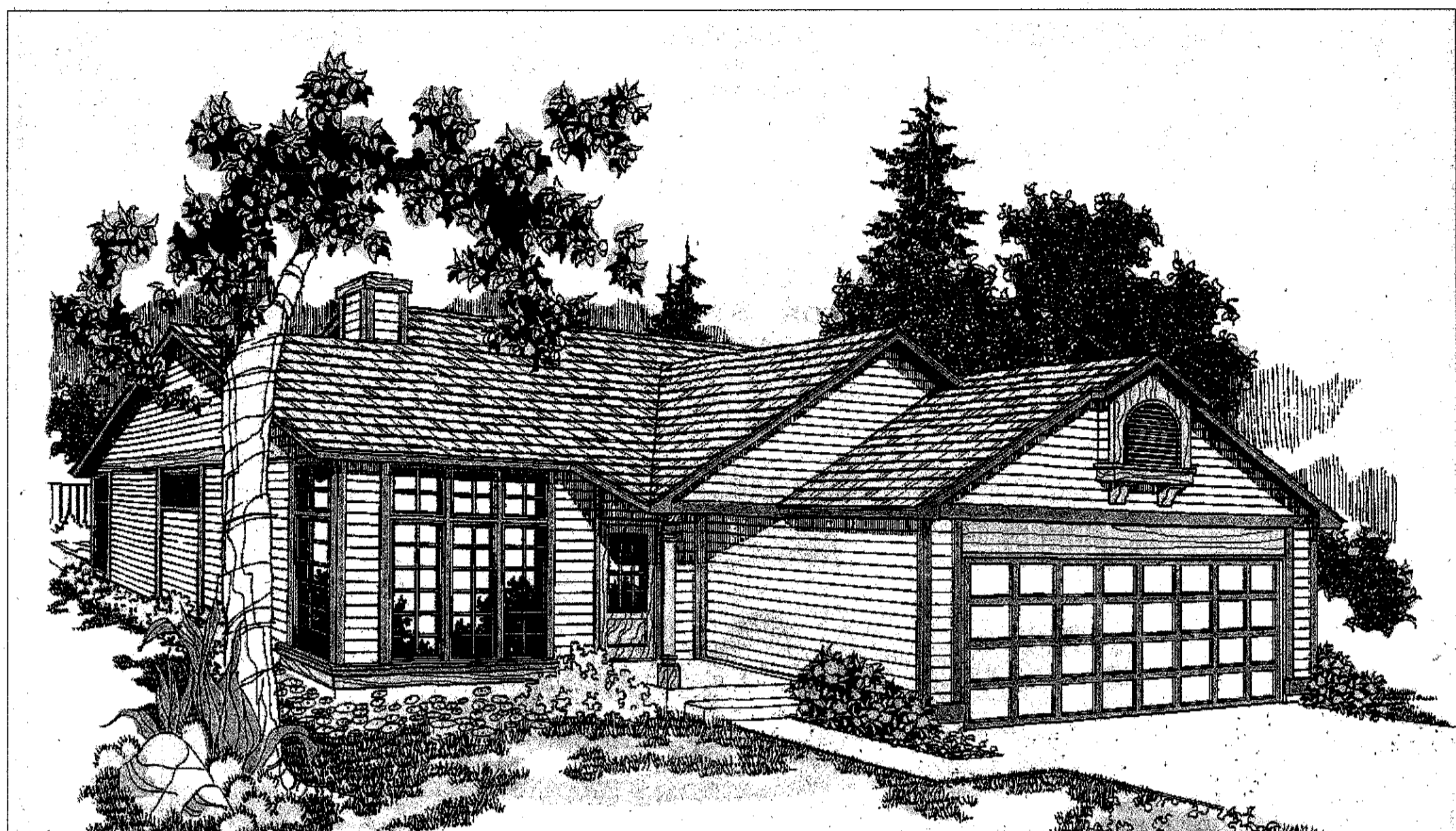


Sunday, October 12, 2008

The Observer & Eccentric Newspapers

Julie Brown, editor . (734) 953-2111. jcbrown@hometownlife.com

www.hometownlife.com



## You may just want to clip out and save Barber design

Ground to roof windows in the front of the Barber (406-30) provides a contemporary look to this 1,545-square-foot home. With the daylight basement, an additional 1,029 square feet of living space is available to be developed. This would be an ideal home for a sloping lot, or for the smaller lot.

A covered porch provides dry entry into the Barber. Opposite the door is the stairway to upstairs. To the left is the living room, which is brightened from the large windows. In the center, between the living and dining rooms is a double-sided fireplace with a wood box. This allows both rooms to enjoy the fire and for the heat to flow throughout the full area. The kitchen and nook are in the rear with a walk-in pantry. The stairs down to the basement are adjacent to the kitchen, below the stairs to the second floor. The master suite is located in the rear of the home with a private deck. There is a walk-in closet and a full bath. Near the master suite entry is a half bath for the first floor.

**The unfinished basement contains a full bath with clothes collection and a washer and dryer. A large storage room across from the bath provides an area for the storage of toys, seasonal items, and even the extra furniture that is not being used.**

Upstairs, there are two bedrooms. Bedroom 3 would be ideal for a guest suite. It is very large with a storage area at one end and a private deck off the other. The bathroom, just outside the bedrooms, is divided with a pocket door. A laundry chute from this bath passes through the master suite closet below and into the basement.

The unfinished basement contains a full bath with clothes collection and a washer and dryer. A large storage room across from the bath provides an area for the storage of toys, seasonal items, and even the extra furniture that is not being used. Next to the utility room and stairs is a counter containing a sink and a mini refrigerator. The balance of the area has not been developed. It is very large and would be ideal for as a family room or recreation room. It could also be used as bedrooms if windows were added to provide light. There is a patio door that opens onto a deck.

For a study plan of the BARBER (406-30), send \$15 to Landmark Designs, 33127 Saginaw Rd. E., Cottage Grove, OR 97424 or call (800) 562-1151. Be sure to specify plan name and number. Compact disks, with search functions are free of charge, to help you search our portfolio for your dream home (\$5 shipping and handling will apply). Or you may order or search online at www.ldiplans.com. Save 15 percent on construction plans using the code (LOE48) online, mailing, or calling (800) 562-1151.

**BARBER (406-30)**  
**OVERALL DIMENSIONS: 40'-0" X 42'-0"**  
**LIVING: 1545 square feet**  
**DAYLIGHT BASEMENT: 1029 square feet**  
**GARAGE: 430 square feet**

**DAYLIGHT BASEMENT**  
 STORAGE 12'3" X 11'6"  
 PATIO

**BASEMENT FLOOR PLAN**  
 1029 SQ FT

**SECOND FLOOR PLAN**  
 507 SQ FT

**FIRST FLOOR PLAN**  
 1038 SQ FT

**DINING** 10'0" X 12'9"  
**NOOK** 8'0" X 7'9"  
**MASTER SUITE** 13'9" X 12'9"  
**LIVING** 12'6" X 16'3"  
**GARAGE** 19'0" X 20'6"  
**DECK**  
**COVERED PORCH**

### BRIEFS

#### Real Estate Agents, Appraising & Staging

Thinking about a career in real estate? Is working in real estate your dream? Keller Williams Realty is seeking experienced or non-experienced people in the real estate field. The candidates must be hard working and have a passion for learning.

There's a free seminar every week: Tuesday or Saturday, 11 a.m. to noon at 27555 Executive Drive (off West 12 Mile and Halsted), Farmington Hills 48331.

For more details, contact Steve Leibhan, (248) 553-0400, Ext. 2500.

#### BIA

Building Industry Association of Southeastern Michigan (BIA) will present Green Built™ Training on Wednesday, Oct. 15, from 9 a.m. to noon at Association Headquarters, 30375 Northwestern Highway, in

#### Farmington Hills.

Chris Pratt of Wake-Pratt Construction will discuss building with materials and methods that result in Green Built™ certification. Building Green offers a change from selling cost per square foot to making an environmental statement.

This course is required for all builder members of Green Built™ Michigan.

Cost for the training is \$65 per person. For registration information, call (248) 862-1033 or register online at www.builders.org.

Building Industry Association of Southeastern Michigan (BIA) will sponsor a Certified Graduate Course, Business Accounting & Job Costs on Tuesday, Oct. 14. The course will be held from 8 a.m. to 3 p.m. at BIA headquarters, 30375 Northwestern Highway, Suite 100, in Farmington Hills.

Chuck Breidenstein, CAPS, of

Builders Professional Services Group will present how a good foundation in the basics of finance is vital for sustaining growth and profitability in conducting a business. The course provides an explanation of basic accounting terms, job cost analysis, financial reporting and other controls needed to manage a small business.

Successful completion of this course meets a requirement for the Certified Graduate Associate, Certified Graduate Builder and Certified Graduate Remodeler designations. This course counts toward pre-licensure and continuing education competency for the State of Michigan.

Registration fees are \$155 for National Association of Home Builder Remodeler members, \$175 for BIA or Apartment Association of Michigan members and \$200 for guests. For registration information,

call (248) 862-1033 or register online at www.builders.org.

Building Industry Association of Southeastern Michigan (BIA) and its NAHBR Professional Remodelers Council (NAHBR) will present a seminar on Avoiding the Top 5 Legal Mistakes Remodelers Make, at BIA headquarters, 30375 Northwestern Highway, Suite 100, in Farmington Hills on Wednesday, Oct. 15, from 6-8 p.m.

Ken Neuman of Neuman Anderson, PC will answer these questions: When do you sue? When do you settle? How does the Lien Act help you get paid? How is the contractor accountable?

Registration fees, including dinner, are \$35 for NAHBR members, BIA members and guests. For registration information, call (248) 862-1008 or register online at www.builders.org.

The Sales and Marketing Council (SMC) of the Building

Industry Association of Southeastern Michigan (BIA) will present a two-day Certified Sales Professional (CSP) and Master Certified Sales Professional (MCSP) course "House Construction as a Selling Tool" on Wednesday and Thursday, Oct. 22-23. Each class will be held from 8:30 a.m. to 4 p.m. at Association Offices, 30375 Northwestern Highway, Suite 100, in Farmington Hills. The course gives the student credit toward CSP and Master CSP designations. This course counts toward pre-licensure and continuing education competency for the State of Michigan.

The professional-level course is designed for specialists in new home sales.

Registration fees are \$300 for SMC members, \$350 for BIA members and \$400 for guests.

For registration information, call (248) 862-1033 or register online at www.builders.org.





# BILL BROWN FORD

## MICHIGAN'S #1 FORD DEALER!

**YES, WE ARE STILL LEASING!!!**

**OPEN MON-THUR TIL 9 PM**

**OCTOBER TRUCK MONTH**

**BUILT Ford TOUGH**

Total New Retail Vehicle Sales and Largest Inventory To Choose From!

**#1 FORD DEALER IN CUSTOMER SATISFACTION!**

## ALL NEW 2009 FORD F150

**NOW AVAILABLE**



### NEW 2008 FORD F-150 4x4 XLT SUPER CREW

Remote start, power windows, locks, speed control, tilt wheel

5 AT THIS PRICE 41 AVAILABLE

Less \$1,000 tow & go discount



MSRP

**\$36,295**

A-PLAN

**\$31,042\***

Up to \$10,500 Ford Factory Rebates. \$7000 Retail Customer Cash, Plus \$500 Ford Credit Retail Bonus Customer Cash plus \$1000 A/X/Z/U-Plan Retail Customer Cash plus if applicable \$2000 Red Carpet Lease Renewal to buy, or \$1000 Retail Owner Loyalty, or \$1,500 Leasing Lease Renewal to buy.

### NEW 2008 FORD F-350 4x4 LARIAT DRW CREW CAB



Stock # 85315

6.4L Diesel, moon roof, chrome pkg, camper pkg, tow command, rear video camera, heated seats

MSRP

**\$53,580**

A-PLAN

**\$46,958\***

**\$Wow, What A Deal!!!**

**NEW 2009 FORD FUSION SE!**  
Featuring...SYNC, Moonroof, remote start, SIRIUS radio, power windows, locks, speed control.  
35 AT THIS PRICE - 349 AVAILABLE  
\$1,000 DOWN SIGN & DRIVE  
BUY FOR **\$13,637\*** \$218<sup>36</sup> MO \$255<sup>36</sup> MO  
\$1,322 DUE AT DELIVERY\* ALL FEES INCLUDED\*

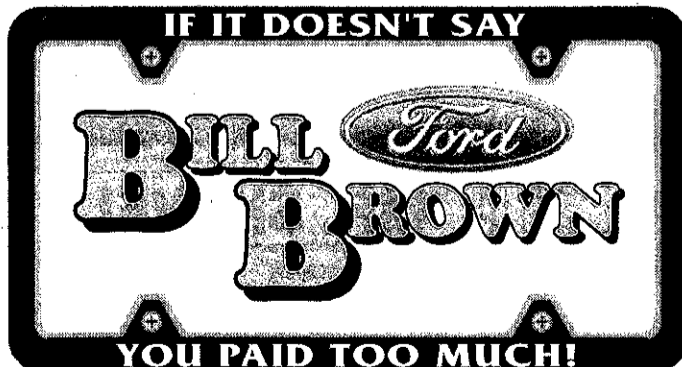
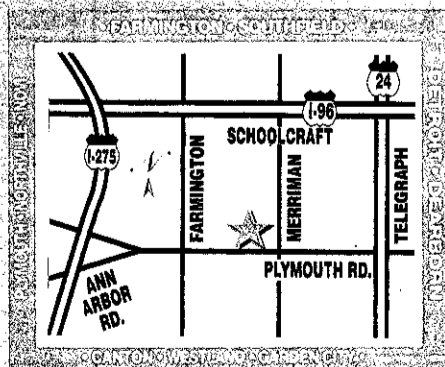
**NEW 2009 FORD ESCAPE XLT!**  
Featuring...remote start, moon roof, SYNC, power windows, locks, power, speed control and tilt wheel  
5 AT THIS PRICE - 178 AVAILABLE  
\$1,000 DOWN SIGN & DRIVE  
BUY FOR **\$18,091\*** \$269<sup>36</sup> MO \$307<sup>36</sup> MO  
\$1,375 DUE AT DELIVERY\* ALL FEES INCLUDED\*

**NEW 2009 FORD FLEX SE!**  
Featuring...SYNC, remote start, power windows, seats, locks, speed control, tilt wheel, reverse sensing system.  
3 AT THIS PRICE - 144 AVAILABLE  
\$1,000 DOWN SIGN & DRIVE  
BUY FOR **\$21,409\*** \$326<sup>36</sup> MO \$366<sup>36</sup> MO  
\$1,466 DUE AT DELIVERY\* ALL FEES INCLUDED\*

**NEW 2009 FORD FOCUS SE!**  
Featuring...automatic, speed control, power windows & locks.  
20 AT THIS PRICE - 133 AVAILABLE  
\$1,000 DOWN SIGN & DRIVE  
BUY FOR **\$11,530\*** \$172<sup>36</sup> MO \$226<sup>36</sup> MO  
\$1,712 DUE AT DELIVERY\* ALL FEES INCLUDED\*

**NEW 2008 FORD TAURUS LIMITED!**  
SYNC, leather, tilt, power windows & locks, heated power seat, AM/FM/CDX6/MP3, audiophile with subwoofer, remote start.  
5 AT THIS PRICE - 67 AVAILABLE  
BUY FOR **\$19,948\***

**NEW 2008 FORD TAURUS X LIMITED!**  
Featuring...remote start, leather, lmt. conv. pkg., SYNC, power windows, locks, seat, speed control and tilt wheel.  
3 AT THIS PRICE - 25 AVAILABLE  
BUY FOR **\$22,579\***



**YES!**  
We are Still Leasing

32222 PLYMOUTH RD. • LIVONIA • 1-800-611-2990

\*All lease payments and buy prices are for qualifying A/Z planners. For qualifying non A/Z planners an additional \$900 to \$1000 would be required to keep the payments or price the same. All payments include acquisition fee, exclude tax and license fees. 10,500 miles per year. Security Deposit Waived. Buy for price add tax, title, doc and destination fee. Subject to availability. All factory rebates assigned to dealer including owner loyalty or previous lease where applicable and may require Ford Credit financing. Pictures may not represent actual vehicle. Payments and prices per program in effect at publication and are subject to change. All offers expire 10-31-08. † Per 2007 dealer ranking for Ford Division.

**BROWSE OUR INVENTORY AT BILLBROWNFord.COM**

Apartment listings: PLYMOUTH-SHELDON PARK, PLYMOUTH/SOUTH LYON, ROYAL OAK - ON CATALPA

Westland Estates "WOW" One Bedrooms from \$495 + 1 Month Free!

Westland Park Apts. FREE RENT 1st month Free and Reduced Rate

Condos/Townhouses: BELLEVILLE CONDO, BIRMINGHAM, BLOOMFIELD HILLS

Condos/Townhouses: PLYMOUTH, ROCHESTER HILLS, SOUTHFIELD

Homes For Rent: CANTON, DEARBORN HEIGHTS, DETROIT

Homes For Rent: GARDEN CITY, SOUTHFIELD, WARREN

Homes For Rent: WAYNE & WESTLAND, WESTLAND

Rooms For Rent: REDFORD - Private Entrance, REDFORD - Nice clean, quiet

THE MEADOWS OF LIVONIA: Seniors 55 & Older, \$59 Moves You In

Westland - 1 bdrm, redecorated, \$450/mo, includes utilities

Westland VENOY PINES APTS. Rent Starting at \$549

Condos/Townhouses: WESTLAND - 3211 Gensselee Ct, WESTLAND - NORWAYNE

Condos/Townhouses: WESTLAND 275/Ford, WESTLAND Palmer/Wildwood

Homes For Rent: WESTLAND, BEVERLY HILLS, BLOOMFIELD HILLS

Homes For Rent: FARMINGTON HILLS, FARMINGTON HILLS, GARDEN CITY

Homes For Rent: REDFORD - 3 bdrm, 1 bath lg, REDFORD - Attractive 3 bdrm

Rooms For Rent: WESTLAND - Economic 2 bdrm, WESTLAND - 2 bdrm house

Village Oaks Apartments: \$540, 899 Security Deposit

For The Most Complete Rental Listing In the Detroit Area... Look NO Further!

WESTLAND HICKORY WOODS APTS. \$224 MOVES YOU IN!

Weatherstone Townhomes: \$1,395, \$499 Security Deposit

Condos/Townhouses: WESTLAND, WESTLAND - NORWAYNE

EASY APPROVALS BAD CREDIT OK: RENT or BUY 3 & 4 bedrooms

Homes For Rent: WESTLAND, BEVERLY HILLS, BLOOMFIELD HILLS

Homes For Rent: WESTLAND, WESTLAND - 2 bdrm house, WESTLAND - 2 bdrm house

Rooms For Rent: REDFORD - 3 bdrm, 1 bath lg, REDFORD - Attractive 3 bdrm

WESTLAND HICKORY WOODS APTS. \$224 MOVES YOU IN!

Westland - 1 bdrm, newly decorated, \$600/mo

Westland - 1 bdrm, \$224, MOVES YOU IN!

LYON TWP \$499\* per mo. 2 Bedroom, 1.5 baths

Condos/Townhouses: WESTLAND, WESTLAND - NORWAYNE

Condos/Townhouses: WESTLAND, WESTLAND - NORWAYNE

Homes For Rent: WESTLAND, WESTLAND - NORWAYNE

Homes For Rent: WESTLAND, WESTLAND - NORWAYNE

Rooms For Rent: WESTLAND - 1 bdrm, \$224, MOVES YOU IN!

When seeking the best deal check out the Observer & Eccentric Classifieds!

WESTLAND HICKORY WOODS APTS. \$224 MOVES YOU IN!

Westland - 1 bdrm, \$224, MOVES YOU IN!

LYON TWP \$499\* per mo. 2 Bedroom, 1.5 baths

Condos/Townhouses: WESTLAND, WESTLAND - NORWAYNE

Homes For Rent: WESTLAND, WESTLAND - NORWAYNE

Homes For Rent: WESTLAND, WESTLAND - NORWAYNE

Homes For Rent: WESTLAND, WESTLAND - NORWAYNE

Rooms For Rent: WESTLAND - 1 bdrm, \$224, MOVES YOU IN!

Anticipating Vacancies! Affordable, Comfortable Living

• Rent is based on income - Efficiency and One Bedroom Apts • On-site office

• Controlled Access & Emergency Pull Cords • Near shopping and doctors

• Daily Meal Program Available • Coin-operated laundry facilities

• Community space with planned activities • On bus line

Canton Place Apartments 44505 Ford Rd • Canton, MI 48187

Call 734-981-6420 FACILITY DESIGNATES SECTION 8-202 AGE 62 AND OLDER

An affiliate of National Church Residences

Anticipating Vacancies! Affordable, Comfortable Living

Best Deal Around! 1 Bedrooms From \$539, 2 Bedrooms From \$639

Franklin Square Apartments: 734-427-6970

Say yes to Waynewood! 1 Bedroom \$499\*, 2 Bedroom \$599\*

Condos/Townhouses: WESTLAND, WESTLAND - NORWAYNE

Homes For Rent: WESTLAND, WESTLAND - NORWAYNE

Homes For Rent: WESTLAND, WESTLAND - NORWAYNE

Homes For Rent: WESTLAND, WESTLAND - NORWAYNE

Homes For Rent: WESTLAND, WESTLAND - NORWAYNE

Rooms For Rent: WESTLAND - 1 bdrm, \$224, MOVES YOU IN!

Brand New Hotel Comfort Suites: HBO, Free Hot Breakfast, Pool, Business Center

Brand New Hotel Comfort Suites: HBO, Free Hot Breakfast, Pool, Business Center

Brand New Hotel Comfort Suites: HBO, Free Hot Breakfast, Pool, Business Center

Brand New Hotel Comfort Suites: HBO, Free Hot Breakfast, Pool, Business Center

Brand New Hotel Comfort Suites: HBO, Free Hot Breakfast, Pool, Business Center

Brand New Hotel Comfort Suites: HBO, Free Hot Breakfast, Pool, Business Center

Brand New Hotel Comfort Suites: HBO, Free Hot Breakfast, Pool, Business Center

Brand New Hotel Comfort Suites: HBO, Free Hot Breakfast, Pool, Business Center

Brand New Hotel Comfort Suites: HBO, Free Hot Breakfast, Pool, Business Center

Home and Service Guide

Observer & Eccentric HOMETOWNLife.com

Home & Service: Home & Service, Asphalt/Blacktopping, A.S.A.P Asphalt Paving

Brick, Block & Cement: A-1 BRICK & STONE REPAIR, ALL CONCRETE

Carpentry: FINISH CARPENTER, Carpet Cleaning/Dyeing, Chimney Cleaning

Drywall: A-1 Plaster & Drywall, COMPLETE DRYWALL SERV.

Firewood: Admire Your Fire Well seasoned, Hard, Birch & Fruit

Handyman M/F: Complete Service Handyman, MASTER HANDYMAN

Hauling/Clean Up: FORECLOSURE CLEAN UPS & HAULING

Landscaping: COMPLETE LANDSCAPING BY LACOURS SERVICES

Painting/Decorating: PAINTING BY MICHAEL HIGHEST QUALITY

PADULA CEMENT COMPANY: Commercial/Residential, All Types of Cement Work

Handyman M/F: All In One We'll beat any written estimate

Handyman M/F: All In One We'll beat any written estimate

Handyman M/F: All In One We'll beat any written estimate

Handyman M/F: All In One We'll beat any written estimate

Handyman M/F: All In One We'll beat any written estimate

Handyman M/F: All In One We'll beat any written estimate

Handyman M/F: All In One We'll beat any written estimate

Handyman M/F: All In One We'll beat any written estimate



# October is Truck Month

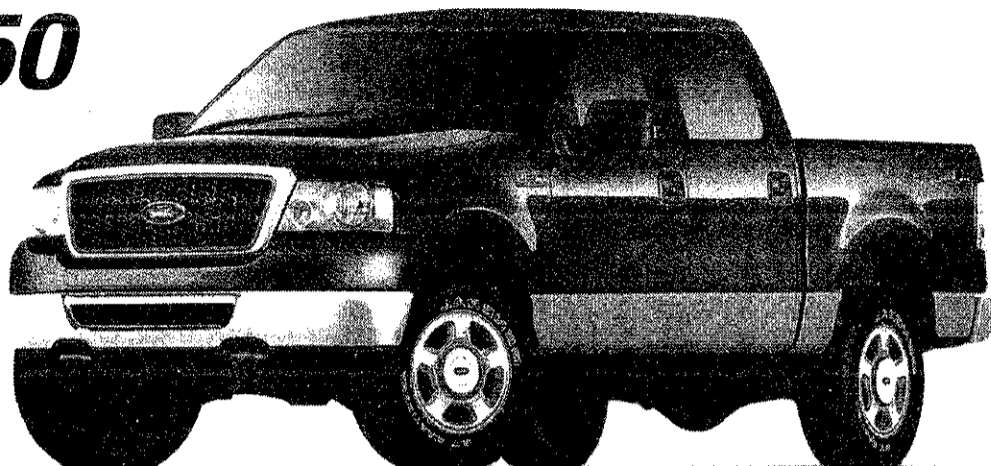
**FREE** Bedliner w/ every new F-Series or Ranger purchase or lease!



**0% APR** financing or up to \$10,500 in Ford Factory Rebates!

at **JACK DEMMER FORD**

## New 2008 Ford F150 XLT Supercrew 4x4



Keyless entry, limited slip axle, 5.4 FFV V-8

STK#82972

A-Plan **\$31,198\***

MSRP \$35,470 After Tow & Go Discount

You pay as little as **\$20,698\***

## New 2008 Ford F150 XLT Supercab 4x4

Limited slip axle, shift on the fly, keyless entry



STK#82789

A-Plan **\$29,038\***

MSRP \$32,955 After Tow & Go Discount

You pay as little as **\$19,538\***

## New 2008 Ford F250 XL 4x4 Plow Truck

Ready for snow??



STK#83346

A-Plan **\$36,300\***

MSRP \$39,643 After Tow & Go Discount

You pay as little as **\$28,800\***

**YES, WE ARE STILL LEASING!! COME IN AND DISCOVER THE DEMMER DIFFERENCE!**

## New 2009 Ford Fusion SE Fwd

Sun & Sync Value Pkg.



STK#90264

A-Plan **\$14,362\***

MSRP \$22,700

Lease for only **\$214.64** 36 mo. \$1,000 down \$1420 due @ signing

## New 2009 Ford Escape XLT Fwd

Sun & Sync Value Pkg.



STK#90618

A-Plan **\$18,816\***

MSRP \$25,030

Lease for only **\$264.93** 36 mo. \$1,000 down \$1473 due @ signing

## New 2008 Ford Edge SE Fwd

Sirius Satellite Radio Convenience group, 18" painted alum. wheels



STK#83417

A-Plan **\$20,123\***

MSRP \$27,335

Lease for only **\$329.25** 36 mo. \$1,000 down \$1616 due @ signing

## New 2009 Ford Focus SE

Pwr windows/locks, cruise control/CD



STK#90242

A-Plan **\$12,224\***

MSRP \$17,905

Lease for only **\$279.94** 36 mo. \$1,000 down \$1489 due @ signing

37300 MICHIGAN AVENUE AT NEWBURGH • WAYNE • JUST EAST OF I-275

# JACK DEMMER FORD

www.demmer.com aplanheadquarters.com

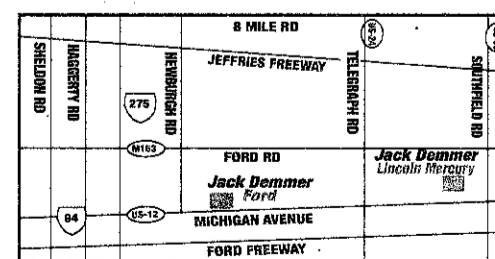
**(800) 818-5997**

**30 FLEX READY FOR DELIVERY**

**Sales Hours**  
Mon & Thurs 8 am - 9 pm  
Tue, Wed & Fri 8 am - 6 pm



**Service Hours**  
Monday - Friday  
7 am - 6 pm



All lease payments and buy prices are for qualifying A/Z Planners. For qualifying non A/Z planners an additional \$900 to \$1500 would be required to keep the payments or prices the same. All payments include acquisition fee, exclude tax, plates, and doc fees. 10,500 miles per year. Security deposit waived. Buy for price add tax, title, doc, and destination fees. Subject to availability. All factory rebates assigned to dealer including owner loyalty or previous lease where applicable and may require Ford Credit financing. Pictures may not represent actual vehicle. Payments and prices per program in effect at publication and are subject to change. All offers expire 10/31/08. 0% APR financing on F Series w/ approved credit. Free bedliner offer for non A/Z/A plan buyers and also expires 10/31/08.