

Appliances 7180

AMANA 10,000BTU air conditioner, exc. cond., 3 years old, \$200. 734-595-1160

REFRIGERATOR - Amana side by side, 3 yrs. old. Like new. Paid \$1100, asking \$475. Must sell. 734-516-7565

Pools Spas & Hot Tubs 7190

18' Swimming Pool with Filter, Ladder & Skimmer, \$599.99. Armstrong Pool 734-261-8318

Bicycles 7210

BIKE TRAILER - Burley D'Lite, great condition, \$250. 248-348-7358

Fitness/Exercise Equipment 7215

BOWFLEX PRO 210. XTULI. Like new, paid \$1800 asking \$1500 or best offer. (734) 699-9415

Elliptical trainer Proform 545E for sale, \$100/best. Troy. (248) 641-9673

Business & Office Equipment 7240

EXECUTIVE MAHOAGANY desk w/ L work station, 72" wide, \$700 / best. 734-394-0849

Computers 7320

Computer - Pentium, internet ready, great starter, good cond., \$150. 734-231-6622

Farm Produce Flowers 7400

SEEKING - Farmer's market vendors at Livonia's Greenmead Historical Park, market open Thurs., from 9-2. 248-477-7375

Hospital/Medical Equipment 7460

CHAMBER LIFT Patient transfer system. 8'x11' frame, lifts/transfers up to 500 lbs. Ideal for home care. \$1900. Call after 6pm, 248-651-7839

ELECTRIC HOSPITAL bed, never used. Original \$1,400; sell \$650. Hydraulic bath chair. Original, \$1,200; sell \$450. 313-492-5245

REAL-ESTATE at it's best!
Observer & Eccentric

Michigan Humane Society
ADOPT-A-PET
This Week's Featured Pet

Trinka
Trinka is a two-year-old Beagle/Doberman mix female with a tan and black coat with big brown eyes and a friendly personality. It won't take her long to become comfortable in your home and she will make a great addition to any family. This pooch is very confident and is very interested in what is going on around her; she may not realize right away that you're at the end of the leash. Since she is active, she is looking for a new owner who will share in her love of playing outdoors and going for walks.

If you would like to give Trinka a place to call home, visit the Michigan Humane Society Westland Shelter (734) 721-7300

Let Everyone Know How Much You Love Your Mom....

....or Your Grandma....or Your Special Aunt....or That Special Someone who acts like a Mom....

For as little as \$2.00 a line you can surprise Mom on her special day with some loving thoughts that she (and everyone else) will see.... You can even include a photo for an additional \$10!

So....call, fax or e-mail your special message to The Observer & Eccentric Newspapers by Wednesday, May 7th and we will publish it for the world to see on Mother's Day - Sunday, May 11th!

1-800-579-SELL
Fax: 734 953-2232
Email: cwilson@oe.homecomm.net

All messages must be prepaid and if sending a photo, please include a stamped, self addressed envelope so we can return your picture.

Jewelry 7470

WANTED! - Expensive Diamond & Gemstone Jewelry. Fine Gold Watches. Estate Pieces, Sterling Silver, Flatware & Tea Sets. CASH WAITING. Overseas Buyers. 248-672-6663

Lawn Garden & Snow Equipment 7480

JOHN DEERE 16 H.P. 42" deck, with trailer, \$1280. (734) 261-3852

MTD 38" Riding mower Good condition. \$425. (248) 476-1779

RIDING MOWER ARIENS like new, 10 HR, 28", w/mulcher and arriorator, extra blade. \$800. 248-471-333

ROTTILOR, ARIENS RT524 5 hp. \$150. 248-348-7358

Lawn & Garden Material 7490

48" Button walk-behind Like new, hydro drive, 16 hp. with catcher \$2500/best. 313-387-9733

Misc. For Sale 7500

AFFORDABLE + CONVENIENT Wolf Tanning beds. Low monthly investments. Home delivery. Free Color Catalog. Call Today 1-800-711-0158 www.np.estan.com

Bathroom sink w/brass faucet \$65, sink & garbage disposal \$35. (248) 539-1209

HOMEOWNERS WANTED! Kayak Pools is looking for demo homesites to display our New "Maintenance Free" Kayak Pool. Save thousands of \$\$\$ with this unique opportunity. Call Now!!! 1-800-31-KAYAK Discount Code: (522-L15)

KENMORE High capacity water softener, \$85/best. MIV stainless steel tank, \$100/best. 313-730-1998

KIRBY 2000 G6 exc. cond, hardly used, includes shampo system, all attachments. \$600. 313-563-1574

MOBILE HOME ROOF SYSTEMS - White enameled aluminum with thick foam insulation and 6" overhead stops all leaks guaranteed! Readily installs over any roof. Paw Paw MI 1-868-216-8549

OAK VANITY 48" cupboard - \$350. 36" oak front door with beveled glass & storm, \$200. Other interior wood doors available. Gas fireplace & mantle, \$500. 248-476-5049

Misc. For Sale 7500

PIONEER POLE BLDGS. 30'x40'X10 Basic \$7290.00, 12'x10 Slider 36" Entrance Door, 12 colors, 2x6 Trusses, Material and Labor, Free Quotes. #1 Company in Michigan 800-292-0679.

SAWMILL \$3895. New Super Lumbermate 2000 - Larger capacities, options. ATV accessories, edgers skidders. www.norwoodindustries.com Norwood Industries, 252 Sonwil Drive, Buffalo, NY 14225. 1-800-578-1363 Ext. 300-N.

Six 5-gal. containers Ben Moore exterior white paint. \$35 per 5-gal. container (734) 455-1811

TARGET 10 MILLION HOMES WITH YOUR AD. Advertise your product or service to approximately 10 million households in North America's best suburbs by placing your classified ad in nearly 800 suburban newspapers just like this one. Only \$695 (USD) for a 25-word ad. One phone call, one invoice, one payment. Ad copy is subject to publisher approval. Call the Suburban Classified Advertising Network at 888-486-2466.

Musical Instruments 7510

BALDWIN R. 1996, 5'8" baby grand piano, polished black lacquer finish. Made in U.S. by Baldwin. Outstanding condition. \$10,000. Call (248) 594-6758

FOR SALE 3/4 Bass Fiddle \$300, Horner Acoustic electric bass guitar \$150, Crate bass amplifier \$100, 39 key Chromatic Concertina \$300, Oscar Schmidt 15 bar Auto Harp \$75. (248) 349-4161

GRAND PIANO-KAWAI Ebony appraised at \$8,000. Exc. cond. Best offer 586-939-8949

Piano, Baby Grand - 1924 Hanes Bros. Conservatory, ivory, very nice, moving. \$1950/best. 586-783-3471

Sporting Goods 7520

Ladies Golf Club Set, With bag. Very good condition \$55. (734) 425-1617

PINBALL - Balli Electra. Excellent condition. \$1000. 248-933-9133.

Tools 7525

Generator - Coleman. Powermate 5000, like new, used once. \$400/best. (248) 353-6414

RADIAL ARM SAW - DeWalt, model #3526, large heavy duty floor model. Includes table, 16" 100 tooth metal cutting blades. Five horsepower, 3 phase, 230/460 volt motor. Good condition. Best offer by 4/30/03 takes it. Contact Jerry at 734-422-7540

TABLE SAW - Jet with dust collector & moveable stand. Excellent condition. \$450. 734-812-3924

Birds & Fish 7820

PEACOCKS beautiful birds, young males 9 months old. Black shouldered/white. 248-476-2962

Cats 7830

Beautiful Kittens - Long hair pure white, blue, and black. \$50-\$100 248 437-1546

Rescued Cuties - Young adults & kittens. Fixed & shots. Call Barb (248) 363-2676

Dogs 7840

AUSSIE SISTERS - 18-20 lbs each looking for home together, housebroken, 2 1/2 yrs. old, great w/kids. \$20 each to loving home. (517) 552-3468

COCKER PUPS, black & white males, plush show coats, \$600. (586) 786-1089

DOBERMAN Beautiful 10 mo. old male, black & rust. Housebroken, AKC papers, ears & tail done. \$350. 248-943-9115

GERMAN SHEPHERD MIX Mature female, spade, good companion. Call 7pm-9pm. 248-595-2275

POMERIANS three, 10 weeks, all shots, 2 males and 1 female. \$450. 734-595-6697

PUG PUPPIES AKC Black and fawn. \$700/males. \$800/female. (810) 231-0893

SAINT BERNARD PUPS - AKC Also English Mastiff pups, AKC www.saintbernard.com 810-678-2907

SAMOYED Male, 2 1/2 years. Needs good home w/fenced yard. \$250. Owner ill. (734) 421-0663

SHIH TZU - Female, 7 weeks old, gold w/black mask, AKC & 1st shots. 734-397-5702

WESTIES PUPS - 6 weeks, 1st shots, AKC, males & females. \$550. (734) 953-1793

YORKIE full breed male puppy. Supplies, all shots. \$600/best. 248-628-2475

Lost & Found-Pets 7930

FOUND - small black & white cat at 8 Mile & Beech. 313-532-7984

8000-3780
Automotive Recreational Vehicles

Airplanes 8000

CLASSIFIED ADS WORK
Call Today
1-800-579-SELL

Boats & Motors 8020

30 hp 1991 Yamaha motor-precision blend, short shaft, \$1650 (248) 477-9832

Arrowglass 1977 -17.5 ft. I/O, exc. cond. trailer, equipped. \$3500/best. (248) 766-2341

BAYLINER 1989, 17' Bowrider, 85 horse, extras. \$3500/best. (734) 462-1791

BAYLINER 1992, 2655 Ciera Sunbridge, \$18,000. New trailer, \$3500. Special offer, \$18,000/both. 517-546-1134.

Boats & Motors 8020

BOSTON WHALER 1972 13' with 40 hp yamaha. Power tilt, hydraulic steering, trailer & cover. \$4500. (248) 738-1607

CATALINA 27 Sailboat, roller, inboard gas engine perfect. \$10,000. 313-881-8743

CHRYSLER 1975 - 14 ft. Tri-Hull, 55 hp w/trailer, \$1400/best. Ask for Dan T. (734) 422-7540

CONOE & KAYAK SWAP May 3 & 4 at ConoeSport in Ann Arbor. Call: 734-663-9515 for details

CROWNLINE - 180BR, 2001 only 55 hrs, 190hp, V6, Sharp! \$16,500 248-626-2430

DONZI 1977 Ski-Sporter 350 Chevy, E-2 loader trailer, garaged. \$9000. 248-553-4597

EBBTIDE -20", fish/ski, troll motor, 225 OB, trailer, mint \$11,900/best. 248-647-6529

FIBERGLASS 1998 water-tender 9' 4", outboard electric motor. Battery. \$450. 248-788-8921

FOUR WINNS 2002 Horizon 200. Volvo-penta 5.0 GXI/SX. Fully equipped. Transferable extended warranty. Trailer. \$25,000/best. (248) 669-2487

FOUR WINNS 325, EXP 1992, T/350, V-drives, full electronics, \$54,900. 734-397-5060

Four-Winns 1988 -180 Horizon, 4.3L V6, 1 owner, mint, \$7500. Days: 734-421-4813

FOURWINNS 1992 -19' Horizon, bow rider, V8, low hrs, \$7200. 810-343-7528

GOBOARD, 2002 Windsurfer, sail, harness, used 1x. Steel at \$2,000. 517-242-8880

HARRIS 1987, 240 Floteboat 24' Pontoon w/40HP Evinrude. \$5400. 248-219-9400

JET BOAT-1995 RINKER With hoist. Exc. cond. \$7000 for both or will sell separate (248) 969-1965

LASER SAILBOAT 1995 with trailer, like new. \$2,999. (734) 805-7521

LONESTAR 16 ft. aluminum boat & trailer, 28 hp Johnson, extras. \$950. 734-525-9462

LOWE/SEA NYMPH 2000 Angler 180S, w/trailer, 40 hp. Johnson, power trim, trolling motor, fish finder. \$5600/best. 517-242-8880

MARINETTE 1984, 39' aft cabin, low hrs., loaded with electronics. 734-416-8176

NORTHSTAR 1996 JET BOAT w/trailer & cover, 17 ft., 115 hp engine, only 25 hrs. Like new. \$7,500/best. (248) 685-3213

PONTOON 1996 Crest Savannah Gold, 25 ft., 40 hp, exc. cond., stored indoors, winters, \$9250. 734-476-5200

PONTOON 1997 Premier Grand Majestic, aluminum deck, Honda 40, 50 hrs, mint. \$18,800. 248-608-0718

RANGER 2000, Fisherman, Merc 225, Optimax, trailer, equip, mint. 734-453-3052

RANGER 2002 522VX Com. 250HP Merc. XB101. Minnkota troll motor, global 2000GPS. Many extras. Exc. cond. \$32,500. 313-790-3231

Automotive

GARAGE SALE Special!

It's that Garage Sale time of year....

With your **Observer & Eccentric Classified Garage Sale Ad**, you can instantly convert your unused household items into cold hard cash and have a chance to....

Win 2 Round Trip Tickets anywhere that Spirit Airlines flies!

Run your 4 line minimum ad at a rate of **\$3.99 a line**, anytime from **April through June 2003** and you'll be entered in a chance to win!

When you place your ad you'll also receive a **Garage Sale Kit** to help you get your sale off to a smooth start!

Call Today!
1-866-818-SOLD 7653
Observer & Eccentric
www.hometownlife.com

* Some restrictions may apply. Employees of Observer & Eccentric and Spirit Airlines are not eligible for this offer.

Markley Marine
The Clinton River's Finest Marina
31300 N. River Rd. • Harrison Twp. • 586-469-6000

Come See The Markley Difference...

It all starts from the time you drive up to the gate house. You'll see the Markley Difference. A uniformed gate attendant, on duty 24 hours a day, 7 days a week, will point your way to the marina office. Here you'll find no public restaurant, no public gas dock, and no boat sales showroom to compromise your security. It's like being in your own private club. Only Markley boaters and their invited guests are allowed in. *That's the Markley Difference.*

At the office, you notice there's always a ready smile from our friendly and professional staff. They'll make you feel right at home. And our yard crew is second to none, with 50+ years of combined experience at Markley Marine. Here you'll be served by the same friendly faces year in and year out, summer and winter. *That's the Markley Difference.*

Drive around and you'll see we're so much more than just parking lots and docks. You'll notice our park-like setting, with some 7 acres of grass for throwing around a frisbee. You'll notice our many barbecue grills and picnic tables, and our two picnic gazebos. Your children will love one of our three playground areas. Your teenagers will love our sand volleyball court. And everyone will love our swimming pool. Here you'll realize that the enjoyment of boating shouldn't end on the water. *That's the Markley Difference.*

Let's get out on the water. Forget something? There's a convenience store here for last minute ice or snacks. Or engine oil. And the professionals at St. Clair Marina Services can make sure that your boat's engine is running smoothly. Or sell you that fan belt or hose clamp you need. Here you'll know that convenience is what we strive for. *That's the Markley Difference.*

On the Clinton River, there are many waterfront restaurants and gas docks just minutes from your dock at Markley. Where are you headed? Downtown Mount Clemens or Lake St. Clair? If the lake's your destination, it will take only 15 minutes to get there. And you don't have to worry about running aground. The Clinton River will give you deep water access to get there safely. Here you'll find a location that's easy to appreciate. *That's the Markley Difference.*

Of course, you'll be so relaxed after a day on the water, you'll want to stay the night. Now our swimming pool and our laundry room could come in handy. Use one of our barbecue grills or visit one of the nearby restaurants. Once back on your boat for the night, you'll be able to rest easy. There's a security guard that patrols the marina all night long. And, of course, there's still a security guard at the front gate. Here your peace of mind is our #1 priority. *That's the Markley Difference.*

At Markley Marine, we know that value means providing high quality at a fair price. That's why we offer low summer (April-October) dockage rates, or discounted annual rates which include outside winter storage. Either way, you'll be surprised how affordable we are. *That's the Markley Difference.*

Does your Marina offer you all this?

- 500 Covered and Open Wells
- Swimming Pool & Sand Volleyball
- 24 hour Security and Roving Guard
- Friendly & Reliable Staff Year Round
- Minutes to Lake, Restaurants, Gas
- 3 Beautiful Picnic & Playground Areas
- Laundry Facility & Convenience Store
- On-Site Engine Repair and Parts Sales

If not, then call (586) 469-6000

Markley Marine
The Clinton River's Finest Marina

LOW RATES Starting at \$1,425
Call Us Today! 586-469-6000

31300 N. River Rd. Harrison Township

Mini Vans (8240)

MERCURY 1997 Villager, new tires, full power, V-6, now only \$6,732.
Lou LaRiche 1-877-55-CHEVY

MERCURY Villager 1999 like new, \$11,995.
CRESTWOOD DODGE 734-421-5700

MERCURY VILLAGER GS 1998 air, power, cruise, smoke-free, mint cond. 734-261-4768

ODYSSEY 2002 EX-18K, mint cond., granite green metallic, \$24,500. 313-366-5758

Oldsmobile 2000 Silhouette, towing pkg, captain seats, \$11,500. 248-651-9646

Plymouth 2000 Grand Voyager SE - 40K miles, exc. cond. \$10,500. 734-421-7147

PLYMOUTH VOYAGER 1996 115,000 miles, clean and cared for, \$4,500. (248) 642-1327 after 6.

PLYMOUTH VOYAGER 1995 - good condition. \$3,500. 248-474-6895

Pontiac 1997 Montana loaded, CD, rear air, trail, etc. \$7,500/best. 248-349-5082

PONTIAC 2000 MONTANA Ext. white 4 dr, 7 pass, loaded, \$11,495. 248-661-4657

PONTIAC Transport SE 1994 3.8L, Aqua Met, 84K loaded, exc cond \$4500.248-305-8224

PONTIAC 1998 Transport EXT Red, CD, exc. cond. \$8,500/best. 248-366-0627

VENTURE 1997 Ext. 5 dr (elect), loaded, 67K, exceptional, \$7,400. 248-655-2349

VOYAGER 1999 Great cond. \$6000/best. 248-910-2842

VOYAGER 2001, mint cond. 19K, \$11,000, take over lease. 734-354-6621

WINDSTAR 2001 LX, 4dr, pw/pl, tint, blue, 44K, like new, \$11,500. 248-342-0222

Vans (8260)

CHEVY CONVERSION VAN 2000 - Take over lease, \$595 down. \$425/mo. for 24 mos. 50,000 mi. left on lease. Call (248) 652-4254

CHEVY VENTURE 1998 86K Good cond., Air, CD, \$6100. Before 6pm 810-796-3844.

DODGE 1993 Conversion, exc. cond., 100K, many new parts. \$4500/best. 313-532-3475

DODGE, 1995, 250 Ram, 7 passenger, exc. cond. \$17,000/best. 313-331-9051

FORD 1990 E-150 Econovan. Customized for Ricon wheel-chair lift & Secure-Lok tie down system (up to 600lbs). 34K, well maintained, \$2500. Call after 6pm, 248-651-7639

FORD 1997 Ext. Cargo Van, E250, 32K, exc. cond. \$10,000 firm. 248-548-5311

FORD 2002 - E-150 Cargo Van, V6, 15K mi., warranty, \$13,000/best. (734) 261-6323

GMC 1994 STARCRFT Conversion, very good cond., 74K, \$6500. 734-981-2381

GMC 1995 VANDURA 2500 Starcraft Conversion Van, loaded, 83K, exc. cond. \$6695/best. 248-961-3956

GMC 2000 High Top Luxury Conversion, black, low miles, loaded, \$15,480. JOHN ROGIN BUICK 734-525-0900

4 Wheel Drive (8280)

CHEVY 1990 TRACKER - low mi., like new, great 1st car, \$3000. Days 313-983-4200 After 6pm 248-879-8606.

CHEVY 2002 S-10 Crew Cab 4x4, fire red, loaded & ready, \$16,980. JOHN ROGIN BUICK 734-525-0900

DODGE 2000 pickup 2500 29K ext warranty, 8" Boss plow, cap, \$18,400. 734-522-1058

DODGE 2000 RAM 4x4, loaded, exc. cond. \$15,700 must sell. Matt 734-641-9394

F-350 1999 - 4x4, low miles, 8 foot Fisher snowplow, \$19,500. 248-347-6089

FORD 1998 F150, Extended cab, 4x4, V8, auto, \$8999/best. TYME SALES 734-455-5666

FORD 1993 F250 - Snowplow, 30K. Many scratches, runs great. \$5000. 734-421-5680

FORD F 150 1997 B bed, loaded, all options, 97K, \$10,500/best. (734) 595-7301

JEEP GRAND CHEROKEE 1994 Laredo, 6 cylinder, extended warranty, exc. cond., \$5500/best. 734 729-3711

RAM 1999 1500 4x4, certified 8/80,000 warranty, \$14,995. CRESTWOOD DODGE 734-421-5700

RAM 2002 2500 4 dr., 4x4, white, 17,000 miles, \$19,980. JOHN ROGIN BUICK 734-525-0900

Sport Utility (8290)

BLAZER 1995 - 4 dr. LS 4x4. Low miles, 74K, loaded, extra nice. \$6950 248-318-2336

CHEVY 1998 Tahoe LT 4wd, 74K, warranty, 1 owner, mint, loaded \$14,500 734-981-2122

CHEVY 1999 Tahoe Red, exc. cond., loaded, 71k miles, r-air, 58K, \$17,500. 248-471-3617

CHEVY BLAZER 1995, 4x4, 4 dr., 113K, 1 owner, needs transmission repair. Sacrifice \$5000. (248) 349-1081

CHEVY BLAZER 1995, 4x4, auto, full power, new alternator, brakes, EGR, very clean, \$6,500. (598) 443-5617

CHEVY TAHOE 1999 LS. Rear air, exc. cond., 67,000 miles, \$16,500. (734) 421-3322

Durango 1999 SLT 4WD, 5.9L, loaded, leather, 66K hvy miles. \$14,900. 734-678-8387

DURANGO 1999 SLT, certified, 8/80,000 warranty, \$18,995. CRESTWOOD DODGE 734-421-5700

Sport Utility (8290)

DURANGO 2002 SLT, black 3rd seat, V-8, loaded, \$17,980. JOHN ROGIN BUICK 734-525-0900

ESCAPE 2001 XLT 4x4, leather, sunroof, trailer tow, CD, 21K, \$17,000. 248-477-8376

EXPLORER - 1990 Sport, 4x4, loaded, great cond., extended warranty, 60K, \$10,000 734-682-4227

EXPLORER 1994 XLT 4x4, loaded, looks/runs great, 137K, \$3800/best. 248-267-9855

EXPLORER 1997 XLT loaded, V8, AWD, moonroof, 6 CD. Reduced. \$8250.248-626-2430

EXPLORER 1998 XLT 4x4 4 DR, 58K, 1 Owner, exc. cond. \$10,500.248-223-3576

EXPLORER 1999 4x4 - 2 dr. CD, tow package, loaded, 68K, \$9700. 248-476-7696

EXPLORER 2000 Sport 4x4, a steal at \$12,995. CRESTWOOD DODGE 734-421-5700

FORD 2002 ESCAPE XLT Like new, leather, sunroof, in-dash 6 cd, 14k, \$18,550. Days 248-646-6633 Eves 248-681-2422

Ford 2002 Escape 4x4 V6, auto, 13K, red, gray leather, 6 CD in dash, moonroof! Must sell/best offer. 734-455-0675

FORD EXPLORER SPORT - 2002, everything power, CD/tape, moonroof, cruise control, foglights, dark green/tan interior, 29,000 miles. \$16,000. (313)-587-9085

GMC 1996 JIMMY SLT, 4x4, 49K, great condition, \$8,700. 248-851-6128

GMC 2001 DENALI moonroof, 4 yr./75K warranty, 59K, 3rd row. \$27,900 248-561-3500

GMC SUBURBAN 1999 SLT 4x4, loaded, 74K, non-smoker. \$16,500. 248-374-8584.

GMC YUKON 1995 2 door, loaded, great cond., 74,500 miles. \$10,500. 734-464-7313

GRAND CHEROKEE 1997 Laredo 56K, clean, loaded, \$11,999. 734-422-6122

GRAND CHEROKEE 1998 LTD, 8 cyl, heated leather seats, exc. cond., assign balance, zero deductible, 7 yr./100K extended service plan. \$13,500. 248-202-0778

HONDA PASSPORT 1998, sport package, 4x4, fully loaded, leather, power sun roof, 1 owner, mint cond. \$11,900 (248) 582-0350

ISUZU, 2001 Rodeo LS 4x4, auto, loaded, 39K, \$13,900. Must sell! 248-477-1097

JEEP 2000 Wrangler, red, CD, soft top, \$12,995. CRESTWOOD DODGE 734-421-5700

JEEP 2001 Cherokee Limited, moon, leather, reduced, won't last, \$21,495. CRESTWOOD DODGE 734-421-5700

JEEP 2002 Liberty Limited, 4x4, loaded, low miles, mint, \$17,800. 248-601-5062

JEEP WRANGLER 1999, hard/soft top, air, 5 speed, 37K, \$12,900. 248-207-7522

JEEP, 2000, Grand Cherokee Laredo, V8, 57K, loaded, \$15,500/best. 248-889-9535

LAND ROVER 1991 - Range Rover, leather, air, CD, sunroof, \$5900. 248-763-3710

MERCURY 1999 Mountaineer loaded, 71k mi, exc. cond., \$11,500. 734-788-6158

SUBURBAN 1999 LS loaded, 60K mi, 2WD, new tires/brakes \$15,900. 734-487-4922

TAHOE 1996 LT - mint, 4x4, leather, maroon, 82K, \$10,500. (248) 866-7562

YUKON 2000 Denali, black, tan leather, chrome, Bose CD, ready to go! \$21,980. JOHN ROGIN BUICK 734-525-0900

Sports & Imported (8300)

328 i 1999 convertible. Loaded, beautifully maintained. \$28,000 734 675-6883

AUDI TT 2001 Convertible all wheel drive, black, 13,100 miles, loaded, exc. cond., \$30,000. 248-808-0000

Antique & Classic Collector Cars (8320)

CADILLAC 1955: Fully restored, Everything new. \$15,000/best. 734-729-3711

Chevy 1987 Impala SS Great Woodward Dream Cruise car - Super Sharp, \$13,500. Call Ed 586-757-0932

CHEVY IMPALA 1968 SS Convertible, big lock, 4 speed, black/red. \$11,500. (248) 486-9179

CHEVY PICK-UP 1969 Short Bed - Chopped 5 inches, louvers, roll pan, front & rear, 350 engine, 350 transmission, \$5500 or best offer. South Lyon. (248) 587-0551

CORVETTE 1978 - 68K miles, auto, t-tops, \$5000. (734) 722-8656

CORVETTE 1980, white, red int., 60K, good cond., \$13,900. After 4. 313-791-8205

Eldorado's 1983 2 southern cars, needs repair. \$3700/best offer. 248-426-8812

FORD GALAXY 1965 - 390, black/black, 69K miles, original paint. \$3,900. (248) 347-6039

Ford Mustang 1965 289 Fastback 4 spd., good cond. \$10,000. (734) 513-9781

MERCEDES BENZ 200CE rare 1981 European 2 door, 4 speed, sunroof, exc. cond. \$4,950. (734) 995-8720

Acura (8340)

INTEGRA, 1995 4 dr, manual, ABS, air, 62K mi, \$7300/best. 248-889-9535

Buick (8360)

CENTURY 2002 low miles, loaded, \$9,980. JOHN ROGIN BUICK 734-525-0900

CENTURY 2003 2 to choose, loaded, EZ finance, full warranty, \$14,980. JOHN ROGIN BUICK 734-525-0900

LESABRE 1995 Loaded, Exc. cond. Champagne, leather, 93K, \$4500. 248-808-4222

LESABRES 2000 3 to choose, loaded, starting at \$9,980. JOHN ROGIN BUICK 734-525-0900

Sports & Imported (8300)

AUDI 1996 A4 2.8 5 Speed, Pearl w/black leather, loaded, sunroof. Bose 6 CD changer. Exec. cond. 130K hwy, great deal! \$7500. (248) 391-6880

AUDI 1997 A6 Quattro Quality European luxury! All power options. Very clean, excellent cond. Save \$\$\$ Red/black, 77K, \$13,775. 586-992-8633

BMW X5 2001 - 3.0 L, AWD, 26.5K miles, loaded, exc. cond. \$35,900. (248) 808-0000

BMW 1992 735i, 87k miles, exc. cond., green/beige, \$8500. Paul (248) 446-9801

BMW 1993 525i 165k, auto, leather, sunroof, exc. cond., \$7,250/best. 248-788-5082

BMW 2001 330i, Green/Sand leather, Premium & cold package, 10,000 miles. \$35,500/best. (734) 495-9585

BMW MINI COOPER 2002, only 15k, five speed, loaded, \$19,995. 734-835-0477

CORVETTE 1980 - T-tops, 43k original miles, good cond., garage kept, \$9500. 248-841-9185

CORVETTE 1992 - red, hatchback, 40K miles, great shape, \$16,500. (734) 414-9993

CORVETTE 1992 Convertible, Polo Green, low mi, exc. cond., \$17,000. 248-646-4184

CORVETTE 1993 Convertible, 40th Anniversary w/hardtop, loaded, excellent cond. \$19,500/best. 248-683-3563

CORVETTE 1996 - red/black, 2 tops, auto, HOK, new chrome rims, 18,000. 248-477-4921

CORVETTE, 1972 - T-tops, 350 Auto, red/black interior, \$7,000. 734-454-9675

MAZDA 1988 RX7 Convertible, 5-Speed stick, \$3600. 734-876-6944

MERCEDES 1992, 500 SEL, silver ovel black leather, sunroof, power everything, exc. cond., great car. Asking \$13,900/best 248-932-8429

Mercedes 1998 E430 Merjedes 1998 E430 white, 49,000 miles. \$24,900. 734-558-4828

MERCEDES 1999 CLK430 AMG, black coupe, winter wheels, 44K, warranty, \$33,900. 734-207-1767

MERCEDES 2003, SL500 ROADSTER, silver/charcoal, 450 miles. 248-646-5337

MERCEDES BENZ 1980 450 SL Convertible 83K, beautiful car, \$12,000. (248) 478-6646

MERCEDES BENZ 1999 E320 AWD, jxc cond., 33K, loaded & Bge, sunroof phone, heated seats, \$29,500. 248-486-6561

Mercedes Benz 1999 SL600 black on black, very fast convertible, V-12, Exc. cond. Low miles! All options. \$49,900. 248-933-5585

Mercedes C320, 2001- Silver, loaded, 35k mi, exc. cond, new tires. Was 45K, now \$28,000. 810-523-9848

MERCEDES, 1988 SLK - Red, 8200 miles, loaded, \$35,000. MERCEDES, 1989 300E - Silver, moonroof, leather, 92K miles, \$9500. 248-608-0718

PORSCHE 2001 Boxster, 9K mi., Silver/black/black, Sport touring group, Porsche stability management, 17" wheels, CD! Truly exc. cond. Must sell! \$33,900. 248-647-6798

PORSCHE 911 Coupe 1987-red, black leather, spoilers, 16" fuchs, sunroof, loaded, 89K, \$24,900. 248-478-8831

PORSH 1984, 944 - red, power, auto, 28,000 original mi. \$7000/best. 248-231-5810

SAAB 2000 93 4 dr., 5 speed, black, tan leather interior, 30,000 miles, air, cd, moonroof, loaded. \$14,900. (248) 642-1034

SAAB 93 2002 - Black w/tan leather, loaded, low mi., \$22,500. (248) 683-0163

SUBARU 2001 Outback, AWD 5 speed, 31K, exc. \$15,900. 517-241-2365

SUZUKI 2002 4 dr. Aerie, 9,000 miles, auto, air, loaded, forest green, \$9,980. JOHN ROGIN BUICK 734-525-0900

VOLVO 1992 240 wagon, teal, clean, great cond., no rust, 147K, highway mi., \$6000. Darin 248-548-5814

VOLVO 940, 1994 low mi, fully loaded, garage, mint cond., \$5200. 248-894-2429

Antique & Classic Collector Cars (8320)

CADILLAC 1955: Fully restored, Everything new. \$15,000/best. 734-729-3711

Chevy 1987 Impala SS Great Woodward Dream Cruise car - Super Sharp, \$13,500. Call Ed 586-757-0932

CHEVY IMPALA 1968 SS Convertible, big lock, 4 speed, black/red. \$11,500. (248) 486-9179

CHEVY PICK-UP 1969 Short Bed - Chopped 5 inches, louvers, roll pan, front & rear, 350 engine, 350 transmission, \$5500 or best offer. South Lyon. (248) 587-0551

CORVETTE 1978 - 68K miles, auto, t-tops, \$5000. (734) 722-8656

CORVETTE 1980, white, red int., 60K, good cond., \$13,900. After 4. 313-791-8205

Eldorado's 1983 2 southern cars, needs repair. \$3700/best offer. 248-426-8812

FORD GALAXY 1965 - 390, black/black, 69K miles, original paint. \$3,900. (248) 347-6039

Ford Mustang 1965 289 Fastback 4 spd., good cond. \$10,000. (734) 513-9781

MERCEDES BENZ 200CE rare 1981 European 2 door, 4 speed, sunroof, exc. cond. \$4,950. (734) 995-8720

Acura (8340)

INTEGRA, 1995 4 dr, manual, ABS, air, 62K mi, \$7300/best. 248-889-9535

Buick (8360)

CENTURY 2002 low miles, loaded, \$9,980. JOHN ROGIN BUICK 734-525-0900

CENTURY 2003 2 to choose, loaded, EZ finance, full warranty, \$14,980. JOHN ROGIN BUICK 734-525-0900

LESABRE 1995 Loaded, Exc. cond. Champagne, leather, 93K, \$4500. 248-808-4222

LESABRES 2000 3 to choose, loaded, starting at \$9,980. JOHN ROGIN BUICK 734-525-0900

REGAL 1990 - Body in good condition. Runs great. 143K, \$1200/best. 734-495-1326

REGAL 2003 LS, 2 to choose, 11,000 miles, full warranty, EZ finance, \$16,980. JOHN ROGIN BUICK 734-525-0900

Cadillac (8380)

CATERA 1998 - 53K, mint, dealer maintained, must see \$11,000/best. 734-658-7312

CATERA 1999 - 32,000 miles, loaded, Exc. cond. \$12,900. 586-268-0718

DEVILLE 1997, 65K mi., dark



All Ads Run Online
FREE!
A Value Of Up To \$87.00

<p>Honda 8520 ACCORD 1996 4 dr. auto, air, cruise, 4 cyl., 94k. \$4800. 734-397-8452 Accord 1998 EX - 4 dr., 85k, full power, leather, moonroof. \$8,700/best. (248) 828-4180 ACCORD 2000 SE Red, 4 door sedan, 26k, exc. cond., loaded, \$12,800. 248-539-4608 ACCORD 2001 LX - 23,000 mi. Loaded, like new. \$14,400. 734-354-0223 Odyssey 2001 EX, power sliding drs., rear heat/air, am/fm/cd, great condition. 34K miles. Asking \$20,500. 248-344-1554</p>	<p>Hyundai 8524 ELANTRA 2002 - GT sport. Black, leather interior, sunroof, spoiler, loaded. 7K mi \$12,550. (313) 862-7966 or (313) 460-7760. SONATA GLS 2001 Exec. cond. 28K. \$11,900. (734) 377-5371 Jeep 8535 WRANGLER 1999 Sahara. Ready for summer & winter fun! All options. 50k, 100k warranty, very clean, excellent cond. \$15,775. 586-992-8633 Jeep 8530 JAGUAR XK8 CONVERTIBLE 1997 32,700K. Exec. cond. Garage kept. Never in snow. Loaded. CD changer, dealer maintained. British racing green/tan, \$33,750 or best. By appt. (248) 847-8966 days</p>	<p>Jaguar 8530 VADENPLAS 1998. Black, 72,000 miles, full warranty, \$18,900. (248) 613-6711 XJS 1993 Convertible 6 cyl. auto, 61k, exc. cond., \$13,000. 248-669-1802 248-640-0690 Jeep 8535 WRANGLER 1999 Sahara. Ready for summer & winter fun! All options. 50k, 100k warranty, very clean, excellent cond. \$15,775. 586-992-8633 Jeep 8530 JAGUAR XK8 CONVERTIBLE 1997 32,700K. Exec. cond. Garage kept. Never in snow. Loaded. CD changer, dealer maintained. British racing green/tan, \$33,750 or best. By appt. (248) 847-8966 days</p>	<p>Lincoln 8560 CONTINENTAL 1998, 59k, loaded, pearl white, moonroof, \$10,000. 248-557-0064 MARK VII 1989 LSC - 5.0, auto, 133K, records from 1990, \$2900. 248-763-3710 SEA RAY 1978 30' cabin cruiser, 2 250 Chrysler engines. Exc. \$15,000. (734) 522-2709 TOWN CAR 1997 Cyprus green, 77K mi., exc. cond. \$10,200/best. (734) 944-4629 TOWN CAR 1979 Collector Series, 70K, 1 owner, clean, runs good. \$3500. 248-478-2013</p>	<p>Lincoln 8560 TOWN CAR 1995 White, leather interior, good condition, V-6, 17,700 miles, w/Vision RoadFX badging. Check www.cars.com. \$12,000. 734-421-8106 GRAND MARQUIS 1990 station wagon. Exec. cond. \$2000/firm. (734) 464-8814 GRAND MARQUIS 1992 LS, V8, 75K miles, exc. cond. \$3,600. 734-981-4115 GRAND MARQUIS 1993 GS, Loaded, 78K, cloth top, exc. cond. \$4,495. 248-473-7203 GRAND MARQUIS 1994, GL, 105K, very clean, runs great, \$4200. 734-261-9464 MARQUIS 1996 Full power, runs great. 81k. Asking \$5295. 248-476-9665 MYSTIQUE 1998 LS - Green, V6, manual, 4 door, 64K miles, loaded, clean. \$5,700. (734) 394-1655 MYSTIQUE 1999 GS silver, auto, loaded, 68K, good condition, \$6500. 313-408-9248 SABLE 1994, auto, all power, air, V-6, 112K, new tires, \$2200. best. 734-729-3554 TOPAZ 1989 New exhaust, battery, tires. AM/FM/CD, cruise, air. \$750/best. (734) 467-6155</p>	<p>Mercury 8600 COUGAR-2000 Excellent condition, V-6, 17,700 miles, w/Vision RoadFX badging. Check www.cars.com. \$12,000. 734-421-8106 GRAND MARQUIS 1990 station wagon. Exec. cond. \$2000/firm. (734) 464-8814 GRAND MARQUIS 1992 LS, V8, 75K miles, exc. cond. \$3,600. 734-981-4115 GRAND MARQUIS 1993 GS, Loaded, 78K, cloth top, exc. cond. \$4,495. 248-473-7203 GRAND MARQUIS 1994, GL, 105K, very clean, runs great, \$4200. 734-261-9464 MARQUIS 1996 Full power, runs great. 81k. Asking \$5295. 248-476-9665 MYSTIQUE 1998 LS - Green, V6, manual, 4 door, 64K miles, loaded, clean. \$5,700. (734) 394-1655 MYSTIQUE 1999 GS silver, auto, loaded, 68K, good condition, \$6500. 313-408-9248 SABLE 1994, auto, all power, air, V-6, 112K, new tires, \$2200. best. 734-729-3554 TOPAZ 1989 New exhaust, battery, tires. AM/FM/CD, cruise, air. \$750/best. (734) 467-6155</p>	<p>Nissan 8620 ALTIMA 2002 2.5SL loaded, very low mi, white, Bose, \$18,000/best. 248-569-1334 ALTIMA 2002 SL, silver, loaded, low miles, \$16,980. JOHN ROGIN BUICK 734-525-0900 Oldsmobile 8640 CUTLASS CERA 1992, 4 door, from original "little old lady" owner. 4K actual! \$2500 Select Auto. 248-851-2277 CUTLASS CRUISER 1995 SL Station Wagon New tires, 46k, exc. cond. \$4800. (734) 751-8989 Pontiac 8660 BONNEVILLE 1992 SE air, leather, tilt, cruise, 148K, \$1792/best. (734) 451-0283 or 734-751-2023 BONNEVILLE SSE 1998, Loaded, 42K, asking \$9900. 248-669-0300, 248-788-8469 Firebird 1997 Red. 1-tops, V6, very nice, air, automatic, \$7550. 248-347-1023</p>	<p>Pontiac 8660 GRAND AM 1997 GT - great condition. 89,500 miles, all power including moon roof, Premium sound with CD. \$4950. 248-435-2046 GRAND AM 2003 SE, silver, power windows/locks/seat, alloy wheels, low low miles, \$13,480. JOHN ROGIN BUICK 734-525-0900 GRAND PRIX 1995 GTP black, very nice shape, 95K \$4500 Lake Orion 248-391-9437 GRAND PRIX 2000 GTP Super Charged, V-6, leather, moonroof, great car only \$11,922. Low LaRrie 1-877-55-CHEVY GRAND PRIX GT 1999 Loaded, 54K. Must sell. \$10,500. 248-889-0004 or 313-570-6194. SUNBIRD CONVERTIBLE 1992 - Well equipped & fun to drive. \$3200. (248) 476-7157 SUNFIRE 2000 - 2 dr, red, a/c, am/fm cassette, 39K, exc. cond. \$7995. 313-550-2117 Saturn 8700 L300 2001 - Very low mileage, like new, loaded, sunroof, \$14,300. Call after 5pm. (734) 591-1133 SATURN SC1 1995 70,500 miles, perfect condition. (248) 652-9211 after 2pm SC2 1998 - black, auto, loaded, only 29k miles, ABS brakes, \$7,500. (734) 721-5168 SL1 1998 4 door, auto power locks, windows, alarm, cd, air, exc. cond., 92,000 miles, \$4,900. (734) 453-1589 SL2 1992, 4 door, dark blue/blue interior, 100,006 mi., performance engine, power windows/doors, air, like new, \$2900. 248-608-3454 Toyota 8720 CAMRY 1990 V6, auto, air, 4 dr., light blue, excellent body and mechanicals, 90K, \$4900. 248-299-6547 M-F. CAMRY 1995 LE - low mi, loaded, garaged, no rust, mint cond. \$5500. 248-506-1153 CAMRY 2002 LE, red metallic, loaded, low miles, \$15,990. JOHN ROGIN BUICK 734-525-0900 CAMRY LE 1995 station wagon - 4 cyl., 52,000 original miles, loaded, \$11,900. (248) 541-2230 CAMRY LE 2001 37K, \$14,500 negotiable. 248-813-1185. COROLLA 1995 - 4 dr, auto, air, 105K, power windows/locks. \$3200. 734-261-6323</p>	<p>Pontiac 8660 GRAND AM 1997 GT - great condition. 89,500 miles, all power including moon roof, Premium sound with CD. \$4950. 248-435-2046 GRAND AM 2003 SE, silver, power windows/locks/seat, alloy wheels, low low miles, \$13,480. JOHN ROGIN BUICK 734-525-0900 GRAND PRIX 1995 GTP black, very nice shape, 95K \$4500 Lake Orion 248-391-9437 GRAND PRIX 2000 GTP Super Charged, V-6, leather, moonroof, great car only \$11,922. Low LaRrie 1-877-55-CHEVY GRAND PRIX GT 1999 Loaded, 54K. Must sell. \$10,500. 248-889-0004 or 313-570-6194. SUNBIRD CONVERTIBLE 1992 - Well equipped & fun to drive. \$3200. (248) 476-7157 SUNFIRE 2000 - 2 dr, red, a/c, am/fm cassette, 39K, exc. cond. \$7995. 313-550-2117 Saturn 8700 L300 2001 - Very low mileage, like new, loaded, sunroof, \$14,300. Call after 5pm. (734) 591-1133 SATURN SC1 1995 70,500 miles, perfect condition. (248) 652-9211 after 2pm SC2 1998 - black, auto, loaded, only 29k miles, ABS brakes, \$7,500. (734) 721-5168 SL1 1998 4 door, auto power locks, windows, alarm, cd, air, exc. cond., 92,000 miles, \$4,900. (734) 453-1589 SL2 1992, 4 door, dark blue/blue interior, 100,006 mi., performance engine, power windows/doors, air, like new, \$2900. 248-608-3454 Toyota 8720 CAMRY 1990 V6, auto, air, 4 dr., light blue, excellent body and mechanicals, 90K, \$4900. 248-299-6547 M-F. CAMRY 1995 LE - low mi, loaded, garaged, no rust, mint cond. \$5500. 248-506-1153 CAMRY 2002 LE, red metallic, loaded, low miles, \$15,990. JOHN ROGIN BUICK 734-525-0900 CAMRY LE 1995 station wagon - 4 cyl., 52,000 original miles, loaded, \$11,900. (248) 541-2230 CAMRY LE 2001 37K, \$14,500 negotiable. 248-813-1185. COROLLA 1995 - 4 dr, auto, air, 105K, power windows/locks. \$3200. 734-261-6323</p>	<p>Volkswagen 8740 1999 VW Beetle Triple black, immaculate, low miles. \$99/down. No cosigner needed. Tyne Sales. 734-455-5566 BEETLE 1998 - Diesel, 45K miles, extras, female owned, \$10,200/best. 313-292-6602 BEETLE 1998, silver, like new, only 25K mi, fully loaded, \$10,900/best. (248) 865-9363 Cabrio 1999, Convertible! Great graduation gift! 47K miles, \$11,500. 248-561-9962 JETTA 1991 GL New tires, CD, good cond. auto, 100K, \$1500/best. (734) 844-0498 JETTA 1996 GLS 83K, 5 speed, sunroof/cassette. Good cond. \$6,600. 248-645-1843 PASSAT 1990: new air, tires, belts, exhaust, 166K, good cond. \$1550. 248-910-7663 PASSAT 1999 4 cyl. auto. 6 CD, black, moonroof. 55K, \$12,500. (248) 584-0941 Autos Under 2000 8780 BUICK 1990 LeSabre V6, loaded, runs great, fair-good cond., \$1500. 734-678-6625 BUICK 1990 Park Ave White, all power, cd, 124k, runs perfect, \$1,750. 313-537-8004 CADILLAC 1990 DeVille Loaded, average miles, good condition. Runs perfect, \$1700. 734-678-6625 CONCORD, 1993 Looks good, runs well, Air, power. \$1999/best. 248-388-2203 DODGE 1990 Conversion Van, auto, loaded, good condition, towing package, runs & drives excellent, well maintained, \$1850. 734-678-6625 DODGE CARAVAN 1992 Good tires and new battery. \$850. (734) 427-6995 FIFTH AVENUE 1985 starts everyday, runs ok. 120K, \$1000/best. (734) 455-7673 LINCOLN CONTINENTAL 1986. Decent shape, 127K, \$1400/best 734 591-1113 MERCURY COUGAR 1988 LS model, 5.0L, auto, 130K, \$1700. (734) 727-1566 MERCURY TOPAZ 1991. Clean, runs good. 71,000 miles, asking \$1400. (313) 387-3669 POLICE IMPOUNDS Cars/Trucks/SUV's From \$500 Lists: 800-319-3323, x7375 SABLE 1992 Wagon automatic, 108k, new tires/brakes \$2000/best. 248-627-2762 WHY DONATE? Cash Money for your car or bike. Running or not. 734-427-8105</p>
---	--	---	---	--	--	---	---	---	--

Michigan's ONLY FIVE TIME WINNER of HONDA'S PRESIDENTS AWARD for Sales & Customer Satisfaction

<p>2003 ELEMENT Auto, removable sky light, clam shell tailgate, power windows & door locks, tilt steering & more! (Stock #YH2823PW) \$16,888*</p>	<p>2003 S2000 Convertible, 2 seater, 6 speed, power windows & locks, leather & more! (Stock #AP1143ENW) \$31,688*</p>
<p>HUGE SELECTION OF ODYSSEYS, PILOTS, ELEMENTS & CRVS.</p>	
<p>2003 ACCORD EX Moon roof, keyless entry, ABS brakes, CD changer & more. (Stock #CM5563JW) \$19,640* \$219**</p>	<p>2003 CIVIC LX 4 DR Automatic transmission, air, power windows, CD player (Stock #ES1653PW) \$14,588* \$129**</p>

*Plus tax, documentation, destination & state fees. **Lease plus tax. Leases are 48 months, 12,000 miles per year, \$0 security deposit. Total due at inception Accord \$1999, Civic \$2350. Expires 4/26/03

HOWARD COOPER HONDA
 Mon & Thurs 8:30-9:00
 Tues, Wed, Fri 8:30-6:00; Sat 10:00-4:00
 2575 S. State, Ann Arbor
 734-761-3200

Varsity Auto Credit #1 in the Nation

6 years in a row
 ★★★★★
 WE Guarantee Approval when other dealers cannot!

Ford-GM-Chevy over 500 to choose

Call our 24 hour Pre-Approval Hotline at 1-800-924-6976

Let me work for you! Call me direct 1-800-850-6684 Ext. 247 Ask for Ben Leece

Guaranteed Approval

Certified USED VEHICLES**

3.9% APR on select models**

Spring Sports Car Specials

<p>2000 GRAND PRIX GT COUPE 3900V-6, 31,000 miles \$13,495</p>	<p>2000 CAMARO SS CONVERTI Red, black top, auto, 31K CALL</p>
<p>1998 BUICK REGAL GS Supercharged, red, leather Only \$7,495</p>	<p>2001 MONTE CARLO SS Silver, p. moon, leather, 29K, loaded \$17,495</p>
<p>2000 TRANS AM 5.7V-8, red, 1-tops \$20,495</p>	<p>1999 GRAND PRIX GT 4 door, silver, only 35K \$11,495</p>
<p>2001 MONTE CARLO SS Red, leather, p. moon, 31K \$17,495</p>	<p>2000 GRAND AM GT Coupe, V6, auto, air, much more, 27k \$10,495</p>
<p>2000 CAMARO SS COUPE Black, automatic, 11K CALL</p>	<p>2000 TRANS AM Red, 1-tops, 5.7 V8 \$20,495</p>

BOB JEANNOTTE
PONTIAC • BUICK • GMC TRUCK
 14949 Sheldon Rd. • Plymouth
734-453-2500

*With approved credit **GM certified vehicle

2003 UNDER INVOICE BLOWOUT SALE!!!

1200 VEHICLES AVAILABLE!!!**

EVERYTHING MUST GO!!!

<p>2003 Explorer XLS 4 Door UP TO \$4000 in rebates or 0% financing for 60 months</p>	<p>2003 Taurus SE UP TO \$3500 in rebates or 0% financing for 60 months</p>
<p>2003 F-150 XLT Super Cab UP TO \$4000 in rebates or 0% financing for 60 months</p>	<p>2003 Taurus SE Sedan UP TO \$3500 in rebates or 0% financing for 60 months</p>
<p>2003 Escape XLS UP TO \$1500 in rebates or 0% financing</p>	<p>2003 Rander Edge SuperCab UP TO \$3500 in rebates or 0% financing for 60 months</p>
<p>2003 Focus SE UP TO \$3500 in rebates or 0% financing</p>	

3 Days Only!

8 to Choose From \$14,495 PLUS TAX Call For Details

LONG LAKE RD. HOGANS MAPLE RD. NORTHWESTERN TELEGRAPH 12 MILE RD. I-696 9 MILE TEL 12 MALL

Blue Oval Certified

1999 PRESIDENTS AWARD
2001 PRESIDENTS AWARD
2002 PRESIDENTS AWARD

TELEGRAPH RD. just North of 12 MILE RD. SOUTHFIELD OPEN MON. & THURS. 'TIL 9 P.M.

FORD

"The Dealership With A Heart"

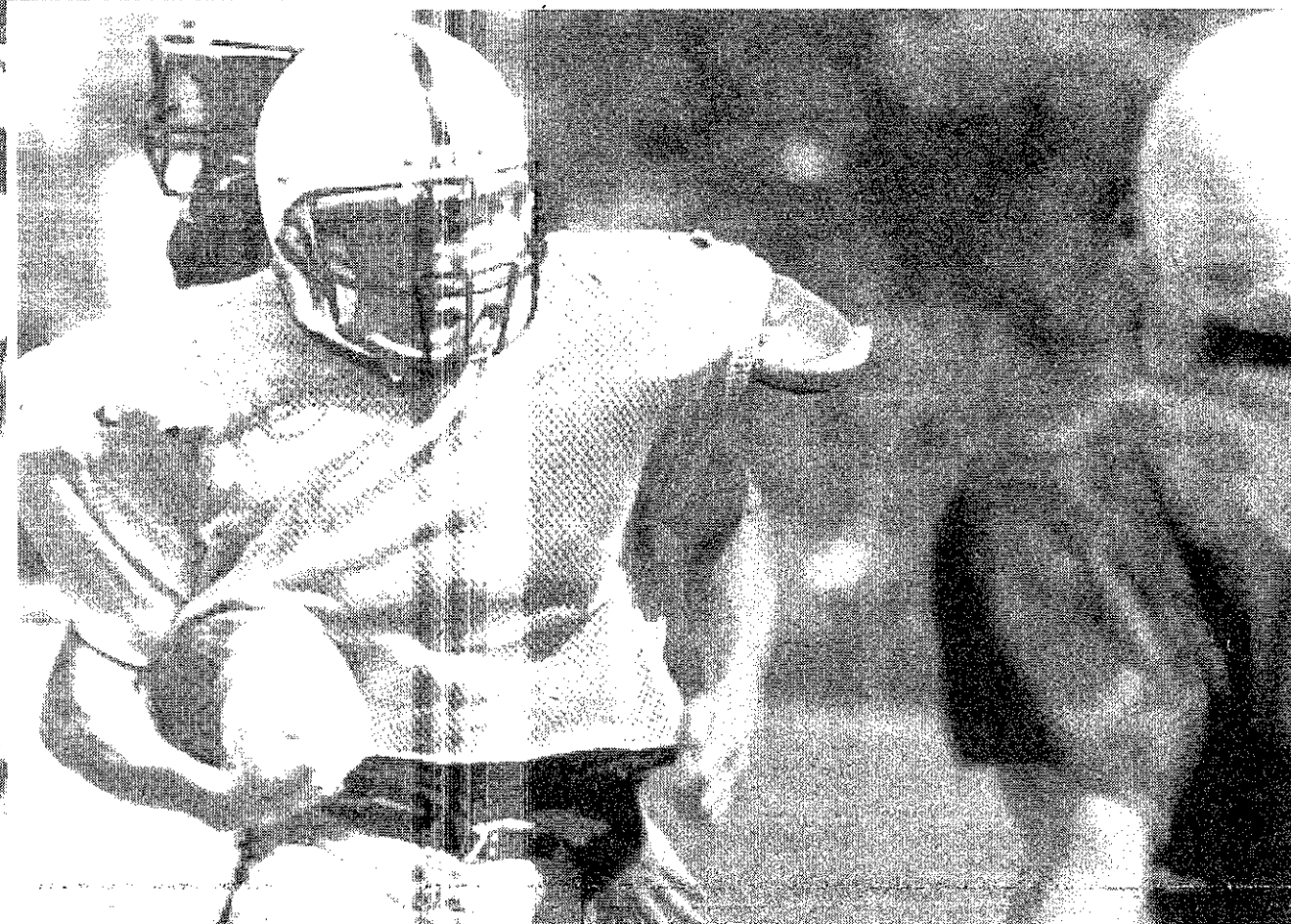
VISIT US 24 HRS. A DAY ON THE INTERNET AT-http://avisford.com

CALL 1-800-358-AVIS or 248-355-7500

24 Hour Automated Credit Approval 1-800-779-2566

*Previous sales excluded. Not all may qualify for 0%. Based on approval from Ford Motor Credit. Does not include T-Bird, SVT, and Harley Davidson Super Crew. 15¢ per mile for coverage. ** Out of inventory only. Sale ends 4-30-03.

Stay in the Game!



Don't miss a single play.
Subscribe today!
Hometown news you won't find
anywhere else.
Just call us and we'll get on the
ball and you'll be the winner!

THE
Observer & Eccentric

NEWSPAPERS

USE OUR E-Z PAY PLAN! Just use your credit card and we will automatically
renew your subscription before it expires. Couldn't be easier!

866-88-PAPER